

# **Flexible Power Procurement Requirements.**

**2020 Procurement Cycle 1 –  
Issued Jan 2020**



## Purpose of this document

This document provides detailed information on the Constraint Management Zones (CMZs) Western Power Distribution intends to procure demand response services for within its first procurement cycle of 2020.

This document is split into the following sections:

<a href="#">Section 1</a>	Introduction
<a href="#">Section 2</a>	The process we will use to procure these services
<a href="#">Section 3</a>	Minimum eligibility criteria
<a href="#">Section 4</a>	Procurement cycle 2 CMZ Summary table
<a href="#">Section 5</a>	Detailed information on each CMZs requirement
<a href="#">Section 6</a>	Sources of further information



## Section 1 – Introduction

### Background

Western Power Distribution (WPD) is the electricity distribution network operation for the Midlands, South West & Wales. Its network delivers electricity over a 55,500 square kilometre service area to over 7.9 million customers.

Access to demand response services can increase WPD's ability to accommodate demand without having to build a larger network. This means WPD can reduce overall network expenditure, resulting in a wider saving to all WPDs customers.

Flexible Power is the customer facing brand created by WPD to deliver the procurement of demand response services.

### Description of the services we intend to procure

WPD recognises that within its distribution area many electricity consumers have the potential to decrease import by shifting demand away from peak periods or the ability increase export by switching their consumption to on-site generation. Where WPD has a known constraint on its network, it wishes to enter into contract with these consumers which will allow WPD to utilise this demand and generation flexibility in return for a payment. This type of arrangement is widely referred to as demand response.

Constraints on WPDs network are confined to specific geographical locations, WPD defines these locations as Constraint Management Zones (CMZs). WPD will be seeking to procure demand response services within CMZs it has identified and published on its Flexible Power website. The website will provide a map of the CMZs location, a postcode finder to allow potential demand suppliers to confirm their site is within the CMZ and the operational window the demand response will be required in. The operational window will detail; the time of year WPD will require the demand response, the time of day WPD will require the demand response and a forecast of the total MWhs WPD anticipate needing within the window. Operation windows will generally be seasonal to support the constraints within the summer and winter demand peaks. Contracts will be awarded for the minimum of 1 year, with the option to extend into further years should the CMZ have ongoing requirements. WPD may decide to award multiple contracts within a CMZ to meet its peak MW requirement.

WPD will procure demand response services in alignment with the services described in ENA'S Open Networks Project DSO Service Definitions document [ONSWSP210SEP18](#).

## Section 2 – The process we will use to procure these services

WPD will maintain a Dynamic Purchasing System (DPS) for its demand response requirements. The DPS will hold records of all potential suppliers that have passed a Pre-Qualification Questionnaire (PQQ) to ensure they meet the minimum eligibility criteria described in section 3. The PQQ does not commit either party to service provision. The PQQ will also ask for site information which will support WPD's assessment of zone viability, and inform which zones proceed to full procurement.

In order to join the DPS, interested parties will be required to first register their interest via WPD's Periodic Indicative Notice (PIN). All parties who respond to the PIN throughout will then be asked to complete the PQQ. Parties who pass the PQQ stage will be added to the DPS, these parties will receive an Invitation to Tender (ITT) to all of WPD's upcoming Demand Response requirements.

DPS registration can be accessed here: <https://rfxwp.westernpower.co.uk/ECE>.

The timetable for this cycle's procurement window is detailed below. Please note, WPD reserves the right to withdraw or add procurement at any time throughout the year.

### **2020 Procurement cycle 1**

6<sup>th</sup> January 2020 – Proposed CMZs published

3<sup>rd</sup> February 2020 – ITT issued to all participants accepted onto the DPS

13<sup>th</sup> March 2020 – ITT Deadline

3<sup>rd</sup> April 2020 – Procurement results

2019 Procurement cycle 2 completed in Oct 2019. The results can be found [here](#).

## Section 3 – Minimum eligibility criteria

To be successfully registered on the DPS parties must meet the following eligibility criteria:

- Completion of all mandatory sections of the PQQ

For a site to be successfully awarded a contract it must meet the following criteria:

- Each site must be within an active CMZ.
- Each site must be able to provide minute by minute metering data.
- Each site must be able to respond within 15 minutes of receipt of a dispatch signal and hold the response for at least 1 hours.
- Each site will be required to build an [Application Programme Interface](#) (API), through which the site will receive dispatch signals and meter data will be issued to WPD.
- Each site must be built or have a connection agreement with final milestone before the CMZs operating window.
- Provision of the service must not put the participant in breach of other agreements (e.g. connection agreements...).
- Acceptance of WPDs CMZ Terms & Conditions

## Section 4 – 2020 Cycle 1 CMZ Summary

WPD's 2020 cycle 1 demand respond requirements are across 42 CMZs, totalling 334MW. This table summarises each CMZ WPD intends to include within its first 2020 procurement cycle.

Zone Name	Zone Location	Applicable Products	MW Peak	Season
<b>East Midlands</b>				
<a href="#"><u>Alfreton</u></a>	Derbyshire	Secure & Restore	3.93	Summer
<a href="#"><u>Ashby/Willesley</u></a>	Leicestershire	Secure & Restore	1.09	Winter
<a href="#"><u>Chesterfield Main</u></a>	Chesterfield	Secure & Restore	1.23	Winter
<a href="#"><u>Clowne</u></a>	Mansfield	Secure & Restore	0.81	Winter
<a href="#"><u>Coalville</u></a>	Leicestershire	Dynamic & Restore	21.56	Winter/Summer
<a href="#"><u>Grassmoor</u></a>	Chesterfield	Secure & Restore	1.94	Winter/Summer
<a href="#"><u>Hinckley</u></a>	Leicestershire	Dynamic & Restore	5.14	Winter/Summer
<a href="#"><u>Lincoln - Beevor Street</u></a>	Lincolnshire	Dynamic & Restore	2.60	Winter/Summer
<a href="#"><u>Lincoln - North Hykeham</u></a>	Lincolnshire	Dynamic & Restore	4.11	Winter
<a href="#"><u>Mantle Lane</u></a>	Leicestershire	Dynamic & Restore	46.25	Winter/Summer
<a href="#"><u>Nailstone</u></a>	Nuneaton	Dynamic & Restore	4.34	Winter/Summer
<a href="#"><u>Weedon</u></a>	Northampton	Secure & Restore	1.65	Winter

<a href="#"><u>Woodbeck</u></a>	Retford	Dynamic & Restore	1.57	Winter/Summer
<a href="#"><u>Woodhall Spa</u></a>	Lincolnshire	Secure & Restore	0.58	Winter
<b>West Midlands</b>				
<a href="#"><u>Apollo - Tamworth</u></a>	Staffordshire	Secure & Restore	3.08	Winter
<a href="#"><u>Donnington</u></a>	Telford	Dynamic & Restore	2.82	Winter/Summer
<a href="#"><u>Meaford</u></a>	Staffordshire	Dynamic & Restore	16.64	Winter/Summer
<a href="#"><u>Oldbury</u></a>	Birmingham	Secure & Restore	10.85	Winter
<a href="#"><u>Tamworth Main</u></a>	Staffordshire	Secure & Restore	2.96	Winter
<a href="#"><u>Union Street - Rugby</u></a>	Warwickshire	Secure & Restore	1.14	Winter
<b>South Wales</b>				
<a href="#"><u>Abergavenny - Builth Wells</u></a>	South Wales	Dynamic & Restore	4.47	Winter/Summer
<a href="#"><u>Abergavenny - Brecon</u></a>	South Wales	Dynamic & Restore	9.00	Winter/Summer
<a href="#"><u>Abergavenny - Glasbury</u></a>	South Wales	Dynamic & Restore	2.86	Winter/Summer
<a href="#"><u>Llandrindod - Rhayader</u></a>	South Wales	Dynamic & Restore	0.92	Winter/Summer
<a href="#"><u>Pembroke - BroadField</u></a>	South Wales	Dynamic & Restore	2.10	Winter/Summer
<a href="#"><u>Pembroke - St Florence</u></a>	South Wales	Dynamic & Restore	1.13	Winter/Summer
<a href="#"><u>Pembroke - Tenby</u></a>	South Wales	Dynamic & Restore	1.82	Winter/Summer

<a href="#"><u>Trevaughan</u></a>	South Wales	Secure & Restore	1.19	Winter
<b>South West</b>				
<a href="#"><u>Bridgwater/Street</u></a>	Somerset	Dynamic & Restore	9.63	Summer
<a href="#"><u>Exeter City</u></a>	Exeter	Dynamic & Restore	9.72	Winter
<a href="#"><u>Hayle - Camborne</u></a>	Cornwall	Secure & Restore	11.20	Winter
<a href="#"><u>Isles of Scilly</u></a>	Isles of Scilly	Secure & Restore	0.47	Winter
<a href="#"><u>Moretonhampstead</u></a>	Newton Abbot North	Dynamic & Restore	1.07	Winter
<a href="#"><u>Newton Abbot</u></a>	Devon	Dynamic & Restore	10.68	Winter
<a href="#"><u>Plymouth/South Hams</u></a>	Devon	Dynamic & Restore	41.92	Summer
<a href="#"><u>Radstock</u></a>	Somerset	Dynamic & Restore	3.26	Winter/Summer
<a href="#"><u>Stokenham</u></a>	South Hams	Secure & Restore	0.78	Winter
<a href="#"><u>Taunton GSP</u></a>	Somerset	Dynamic & Restore	68.41	Winter
<a href="#"><u>Tiverton</u></a>	Devon	Dynamic & Restore	9.88	Winter/Summer
<a href="#"><u>Weston Super Mare</u></a>	Somerset	Secure & Restore	3.76	Winter
<a href="#"><u>Witheridge</u></a>	Devon	Secure & Restore	0.86	Winter
<a href="#"><u>Brimcombe</u></a>	Stroud	Dynamic & Restore	4.15	Winter

## Section 5 - Detailed information on each CMZ's requirement

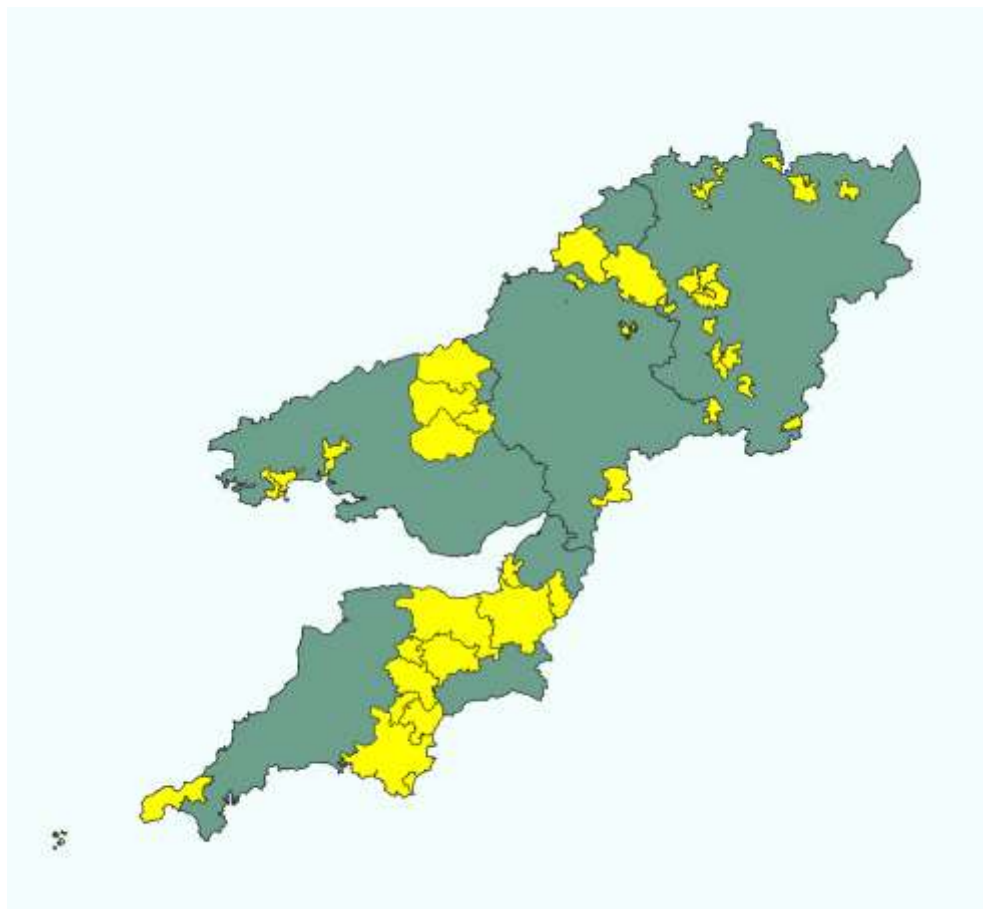


Image: map of WPD licence areas showing all CMZs WPD propose to include in the 2020 demand response procurement cycle 1.

The following pages provide detail on each of the CMZs WPD propose to include in the 2020 demand response procurement cycle 1.

## Flexibility Analysis Report for CMZ\_T4A\_EM\_0016 - Alfreton



Products	Season	MW Peak
Secure & Restore	Summer	3.93

More information about this zone:

[https://www.flexiblepower.co.uk/scheme/CMZ\\_T4A\\_EM\\_0016](https://www.flexiblepower.co.uk/scheme/CMZ_T4A_EM_0016)

is the dedicated scheme page for this zone on the Flexible Power website, here you can view;

- Availability windows
- Monthly profiles
- Service overview
- Valuation tool
- Postcode checker
- Register interest

The monthly profiles can also be downloaded here:

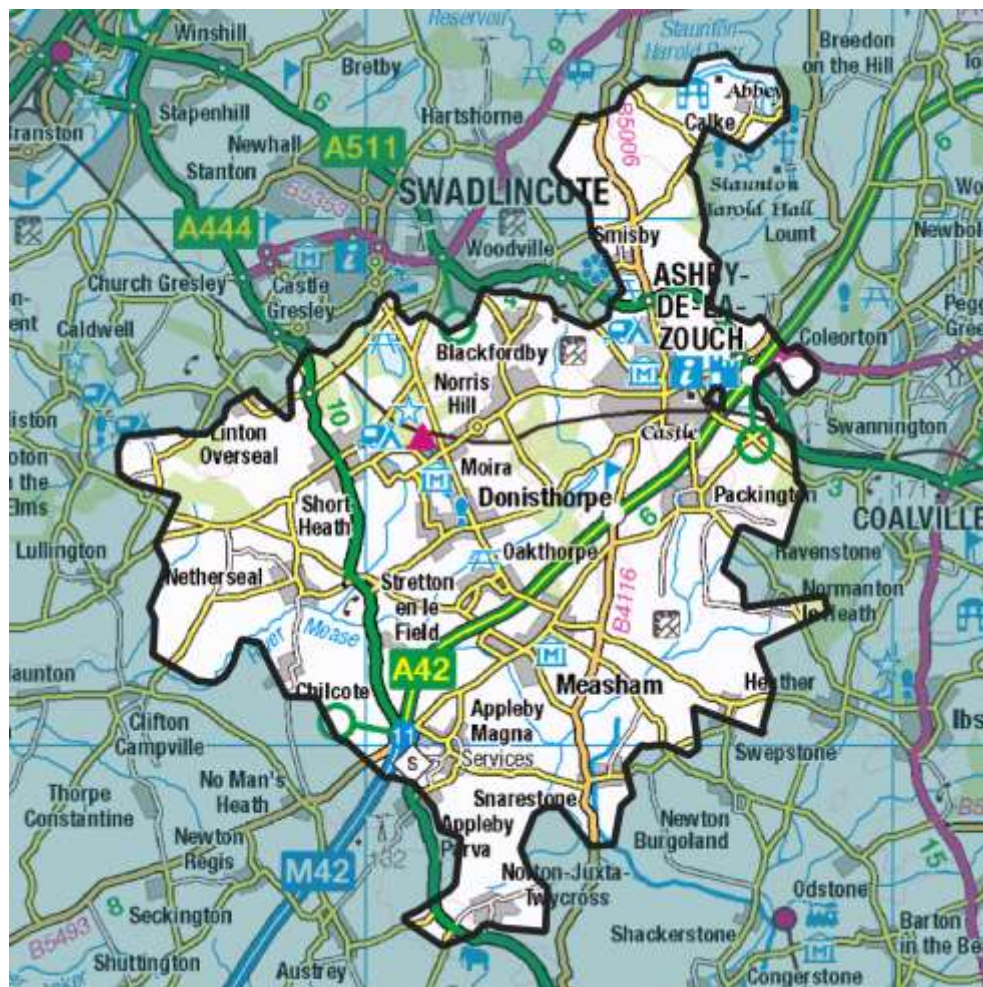
[www.flexiblepower.co.uk/downloads/310](https://www.flexiblepower.co.uk/downloads/310)

Alternatively, if you're viewing this document on a PC, the monthly profiles will be visible as embedded attachments.

[Back to CMZ list](#)



## Flexibility Analysis Report for CMZ\_T4A\_EM\_0014 - Ashby/Willesley



Products	Season	MW Peak
Secure & Restore	Winter	1.09

More information about this zone:

[https://www.flexiblepower.co.uk/scheme/CMZ\\_T4A\\_EM\\_0014](https://www.flexiblepower.co.uk/scheme/CMZ_T4A_EM_0014) is the dedicated scheme page for this zone on the Flexible Power website, here you can view;

- Availability windows
- Monthly profiles
- Service overview
- Valuation tool
- Postcode checker
- Register interest

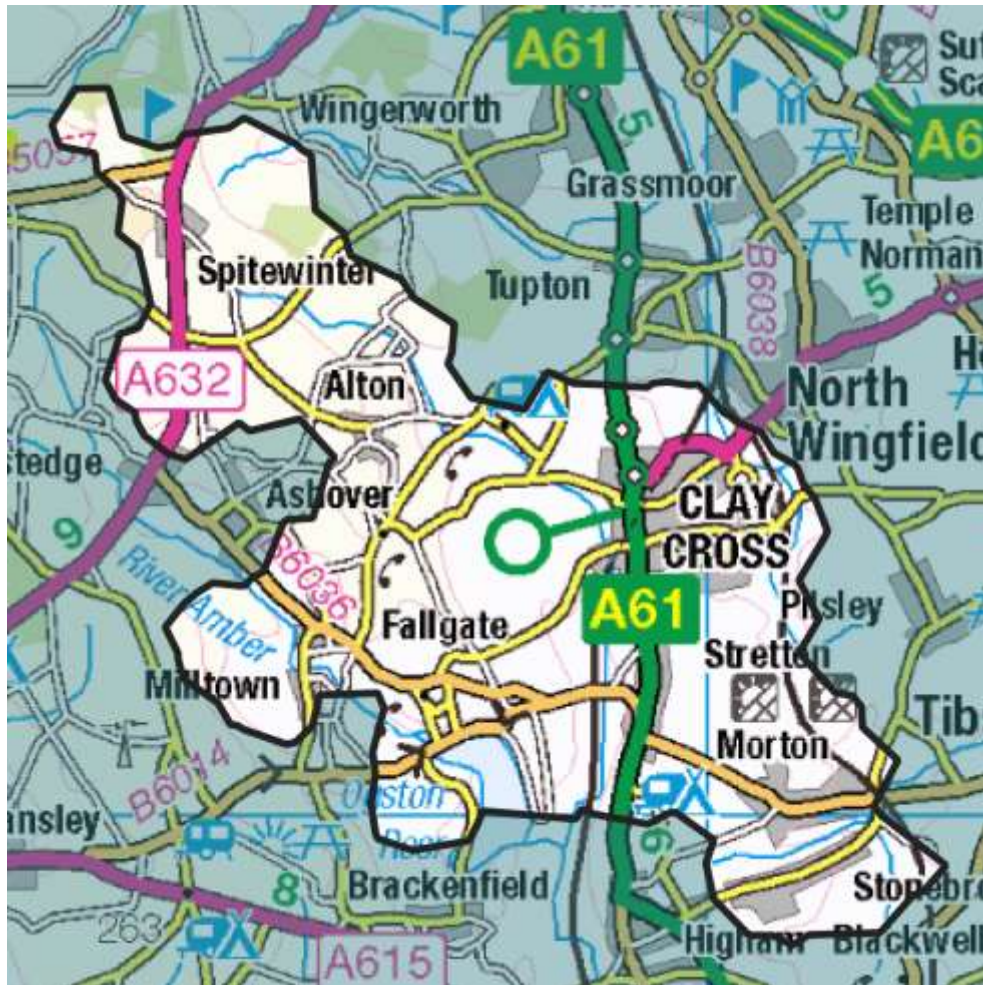
The monthly profiles can also be downloaded here:

[www.flexiblepower.co.uk/downloads/304](https://www.flexiblepower.co.uk/downloads/304)

Alternatively, if you're viewing this document on a PC, the monthly profiles will be visible as embedded attachments.

[Back to CMZ list](#)

## Flexibility Analysis Report for CMZ\_T4A\_EM\_0010 - Chesterfield Main



Products	Season	MW Peak
Secure & Restore	Winter	1.23

More information about this zone:

[https://www.flexiblepower.co.uk/scheme/CMZ\\_T4A\\_EM\\_0010](https://www.flexiblepower.co.uk/scheme/CMZ_T4A_EM_0010)

is the dedicated scheme page for this zone on the Flexible Power website, here you can view;

- Availability windows
- Monthly profiles
- Service overview
- Valuation tool
- Postcode checker
- Register interest

The monthly profiles can also be downloaded here:

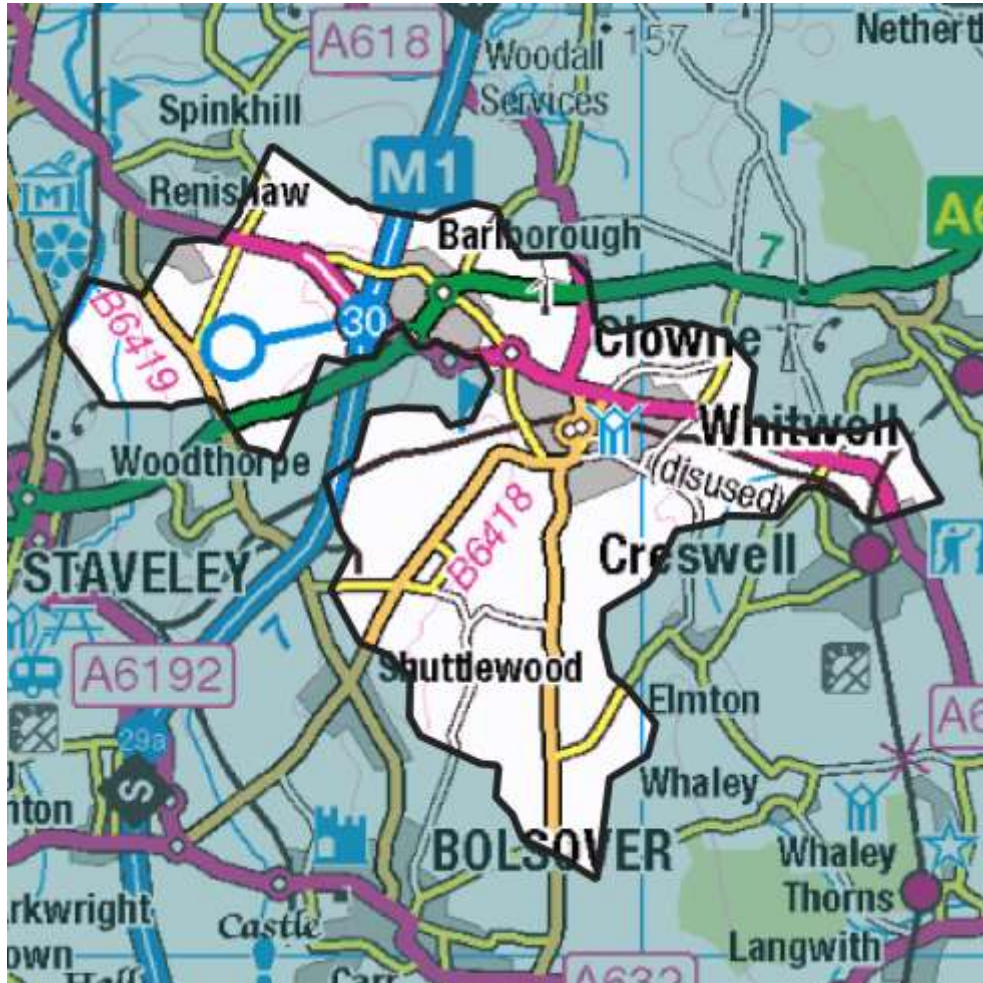
[www.flexiblepower.co.uk/downloads/292](https://www.flexiblepower.co.uk/downloads/292)

Alternatively, if you're viewing this document on a PC, the monthly profiles will be visible as embedded attachments.

[Back to CMZ list](#)



## Flexibility Analysis Report for CMZ\_T4A\_EM\_0011 – Clowne



Products	Season	MW Peak
Secure & Restore	Winter	0.81

More information about this zone:

[https://www.flexiblepower.co.uk/scheme/CMZ\\_T4A\\_EM\\_0011](https://www.flexiblepower.co.uk/scheme/CMZ_T4A_EM_0011) is the dedicated scheme page for this zone on the Flexible Power website, here you can view;

- Availability windows
- Monthly profiles
- Service overview
- Valuation tool
- Postcode checker
- Register interest

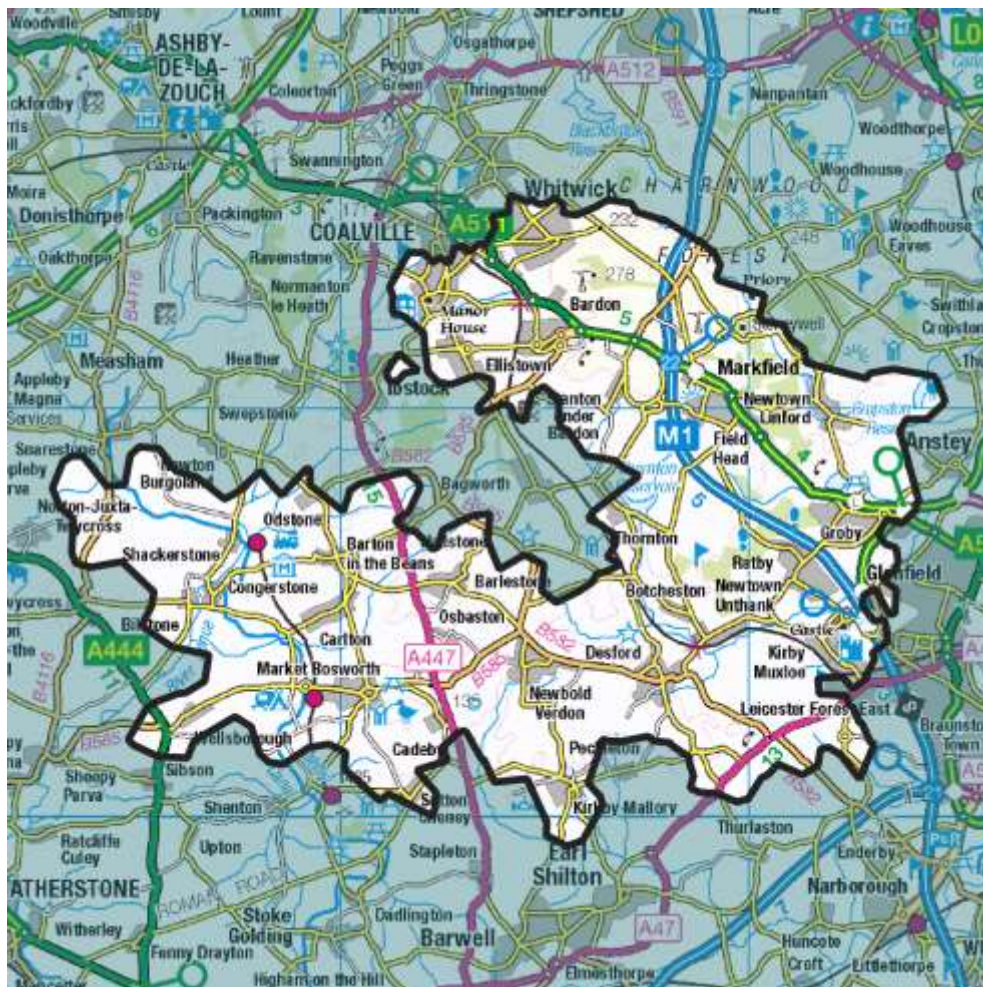
The monthly profiles can also be downloaded here:

[www.flexiblepower.co.uk/downloads/295](https://www.flexiblepower.co.uk/downloads/295)

Alternatively, if you're viewing this document on a PC, the monthly profiles will be visible as embedded attachments.

[Back to CMZ list](#)

## Flexibility Analysis Report for CMZ\_T4A\_EM\_0012 – Coalville



Products	Season	MW Peak
Dynamic & Restore	Winter/Summer	21.56

More information about this zone:

[https://www.flexiblepower.co.uk/scheme/CMZ\\_T4A\\_EM\\_0012](https://www.flexiblepower.co.uk/scheme/CMZ_T4A_EM_0012) is the dedicated scheme page for this zone on the Flexible Power website, here you can view;

- Availability windows
- Monthly profiles
- Service overview
- Valuation tool
- Postcode checker
- Register interest

The monthly profiles can also be downloaded here:

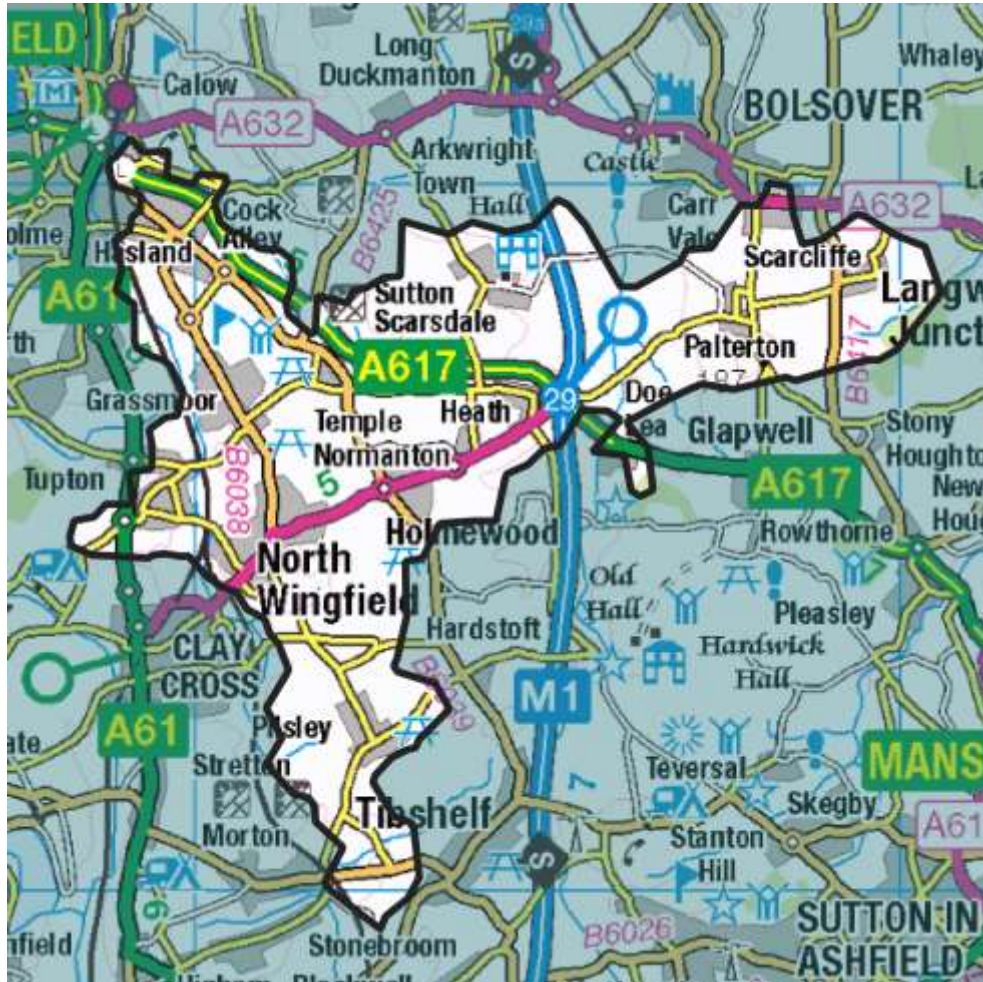
[www.flexiblepower.co.uk/downloads/298](https://www.flexiblepower.co.uk/downloads/298)

Alternatively, if you're viewing this document on a PC, the monthly profiles will be visible as embedded attachments.

[Back to CMZ list](#)



## Flexibility Analysis Report for CMZ\_T4A\_EM\_0013 – Grassmoor



Products	Season	MW Peak
Secure & Restore	Winter/Summer	1.94

More information about this zone:

[https://www.flexiblepower.co.uk/scheme/CMZ\\_T4A\\_EM\\_0013](https://www.flexiblepower.co.uk/scheme/CMZ_T4A_EM_0013) is the dedicated scheme page for this zone on the Flexible Power website, here you can view;

- Availability windows
- Monthly profiles
- Service overview
- Valuation tool
- Postcode checker
- Register interest

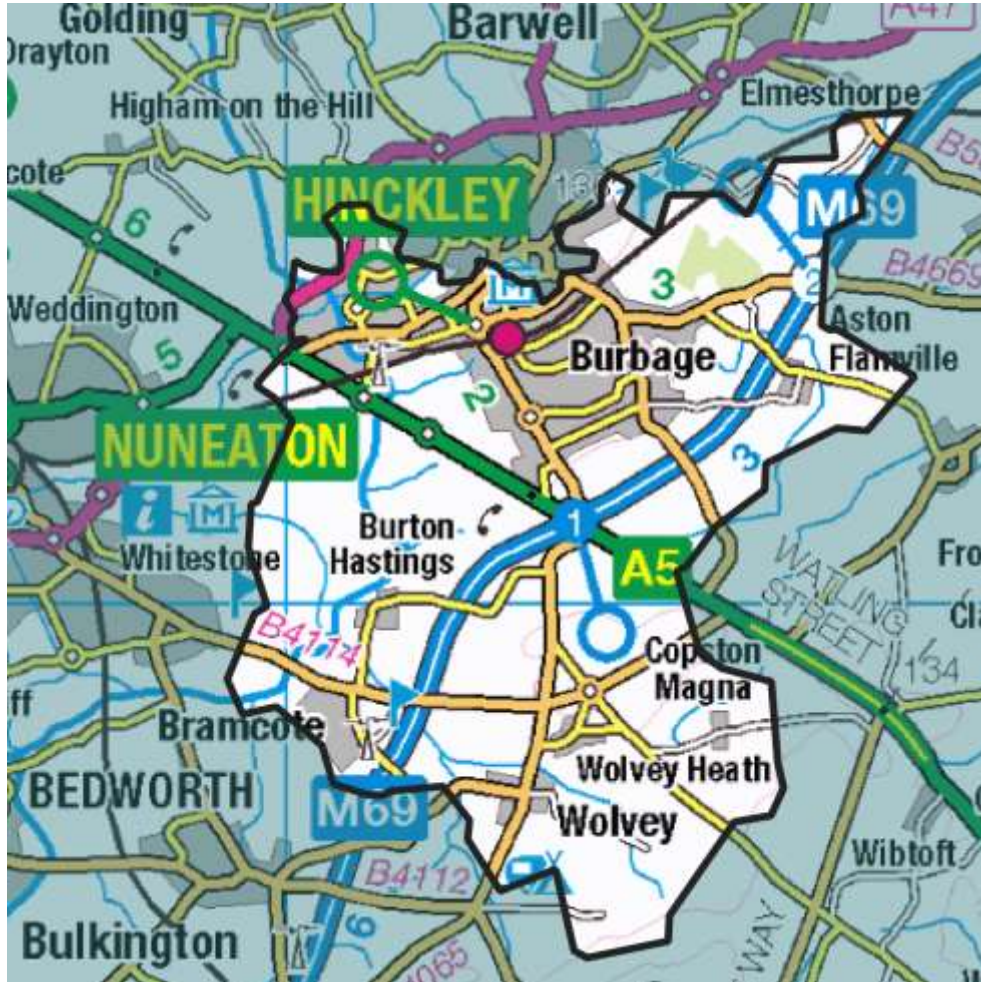
The Monthly profiles can also be downloaded here:

[www.flexiblepower.co.uk/downloads/301](https://www.flexiblepower.co.uk/downloads/301)

Alternatively, if you're viewing this document on a PC, the monthly profiles will be visible as embedded attachments.

[Back to CMZ list](#)

## Flexibility Analysis Report for CMZ\_T4A\_EM\_0015 – Hinckley



Products	Season	MW Peak
Dynamic & Restore	Winter/Summer	5.14

More information about this zone:

[https://www.flexiblepower.co.uk/scheme/CMZ\\_T4A\\_EM\\_0015](https://www.flexiblepower.co.uk/scheme/CMZ_T4A_EM_0015)  
is the dedicated scheme page for this zone on the Flexible Power website, here you can view;

- Availability windows
- Monthly profiles
- Service overview
- Valuation tool
- Postcode checker
- Register interest

The Monthly profiles can also be downloaded here:

[www.flexiblepower.co.uk/downloads/307](https://www.flexiblepower.co.uk/downloads/307)

Alternatively, if you're viewing this document on a PC, the monthly profiles will be visible as embedded attachments.

[Back to CMZ list](#)



## Flexibility Analysis Report for CMZ\_T3A\_EM\_0005 - Lincoln - Beevor Street



Products	Season	MW Peak
Dynamic & Restore	Winter/Summer	2.6

More information about this zone:

[https://www.flexiblepower.co.uk/scheme/CMZ\\_T3A\\_EM\\_0005](https://www.flexiblepower.co.uk/scheme/CMZ_T3A_EM_0005)

is the dedicated scheme page for this zone on the Flexible Power website, here you can view;

- Availability windows
- Monthly profiles
- Service overview
- Valuation tool
- Postcode checker
- Register interest

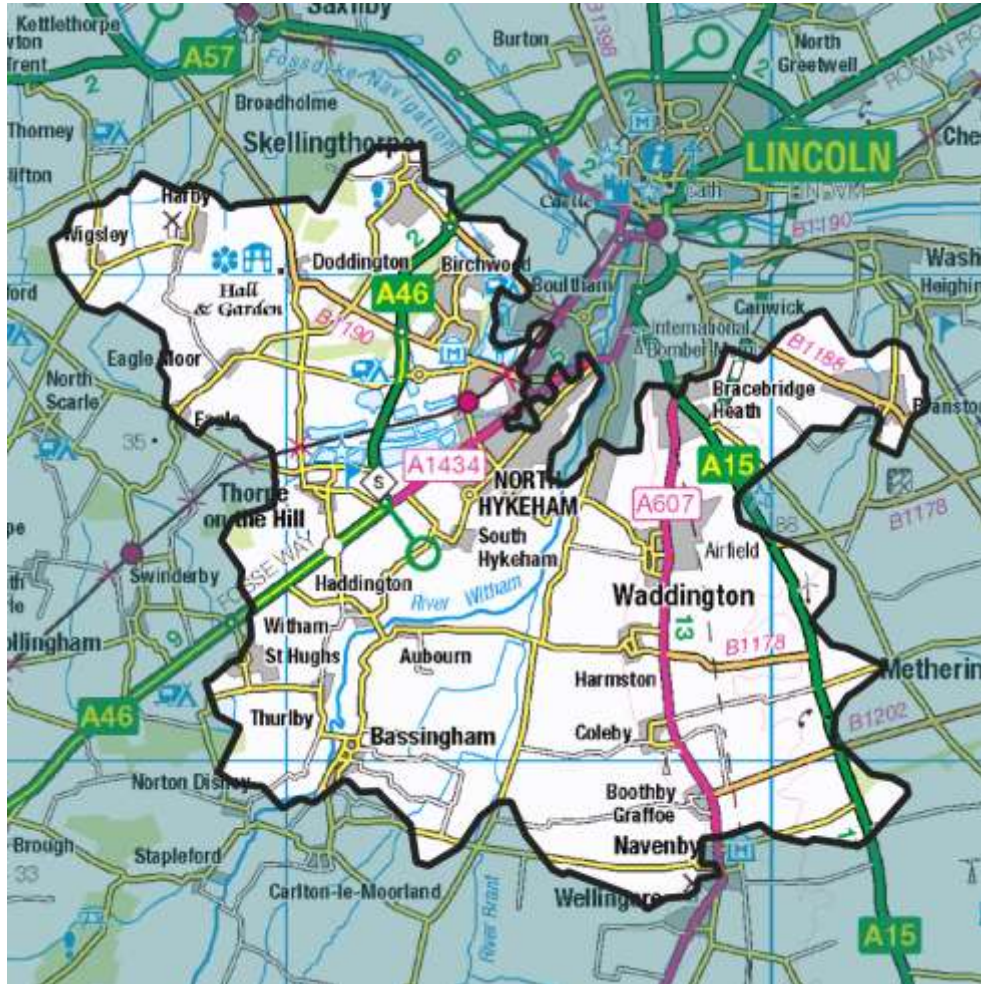
The Monthly profiles can also be downloaded here:

[www.flexiblepower.co.uk/downloads/265](https://www.flexiblepower.co.uk/downloads/265)

Alternatively, if you're viewing this document on a PC, the monthly profiles will be visible as embedded attachments.

[Back to CMZ list](#)

## Flexibility Analysis Report for CMZ\_T3A\_EM\_0004 - Lincoln - North Hykeham



Products	Season	MW Peak
Dynamic & Restore	Winter	4.11

More information about this zone:

[https://www.flexiblepower.co.uk/scheme/CMZ\\_T3A\\_EM\\_0004](https://www.flexiblepower.co.uk/scheme/CMZ_T3A_EM_0004)

is the dedicated scheme page for this zone on the Flexible Power website, here you can view;

- Availability windows
- Monthly profiles
- Service overview
- Valuation tool
- Postcode checker
- Register interest

The Monthly profiles can also be downloaded here:

[www.flexiblepower.co.uk/downloads/262](http://www.flexiblepower.co.uk/downloads/262)

Alternatively, if you're viewing this document on a PC, the monthly profiles will be visible as embedded attachments.

[Back to CMZ list](#)



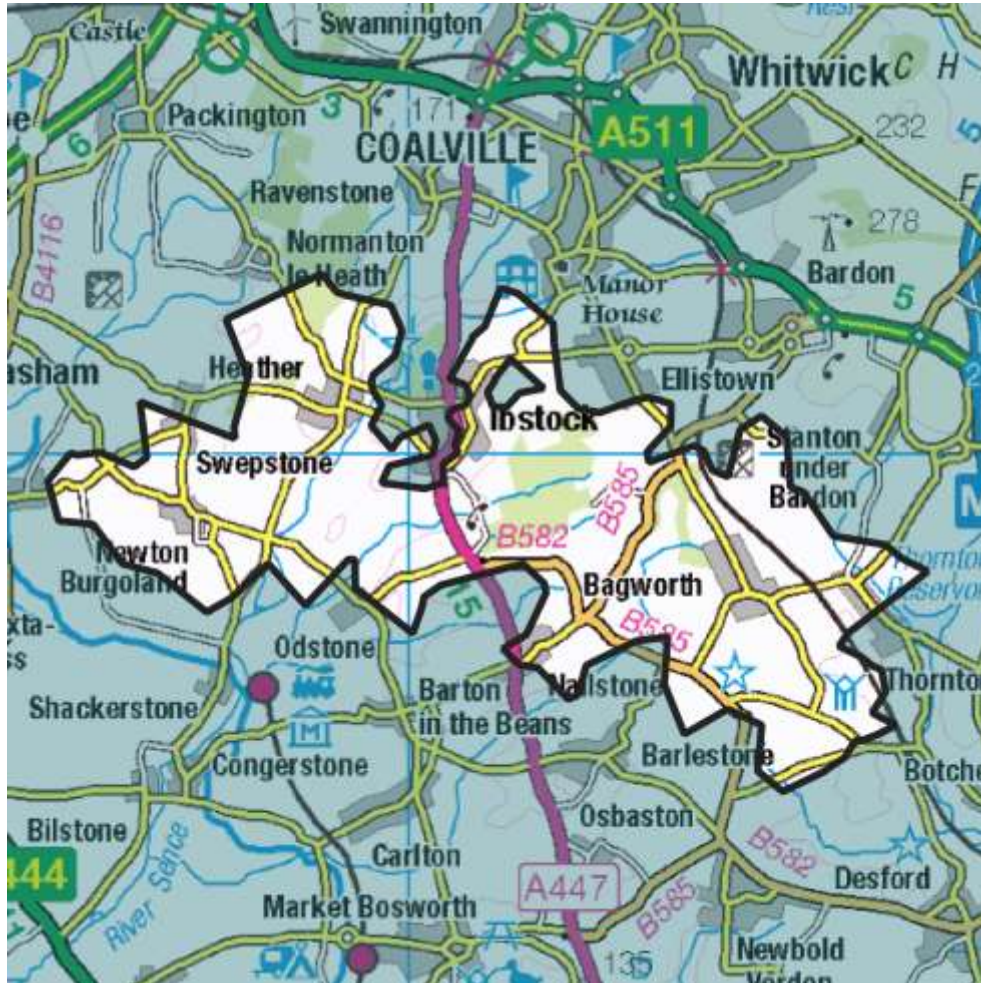
More information about this zone:

- Availability windows
- Monthly profiles
- Service overview
- Valuation tool
- Postcode checker
- Register interest

Alternatively, if you're viewing this document on a PC, the monthly profiles will be visible as embedded attachments.

[Back to CMZ list](#)

## Flexibility Analysis Report for CMZ\_T4A\_EM\_0017 – Nailstone



Products	Season	MW Peak
Dynamic & Restore	Winter/Summer	4.34

More information about this zone:

[https://www.flexiblepower.co.uk/scheme/CMZ\\_T4A\\_EM\\_0017](https://www.flexiblepower.co.uk/scheme/CMZ_T4A_EM_0017)

is the dedicated scheme page for this zone on the Flexible Power website, here you can view;

- Availability windows
- Monthly profiles
- Service overview
- Valuation tool
- Postcode checker
- Register interest

The Monthly profiles can also be downloaded here:

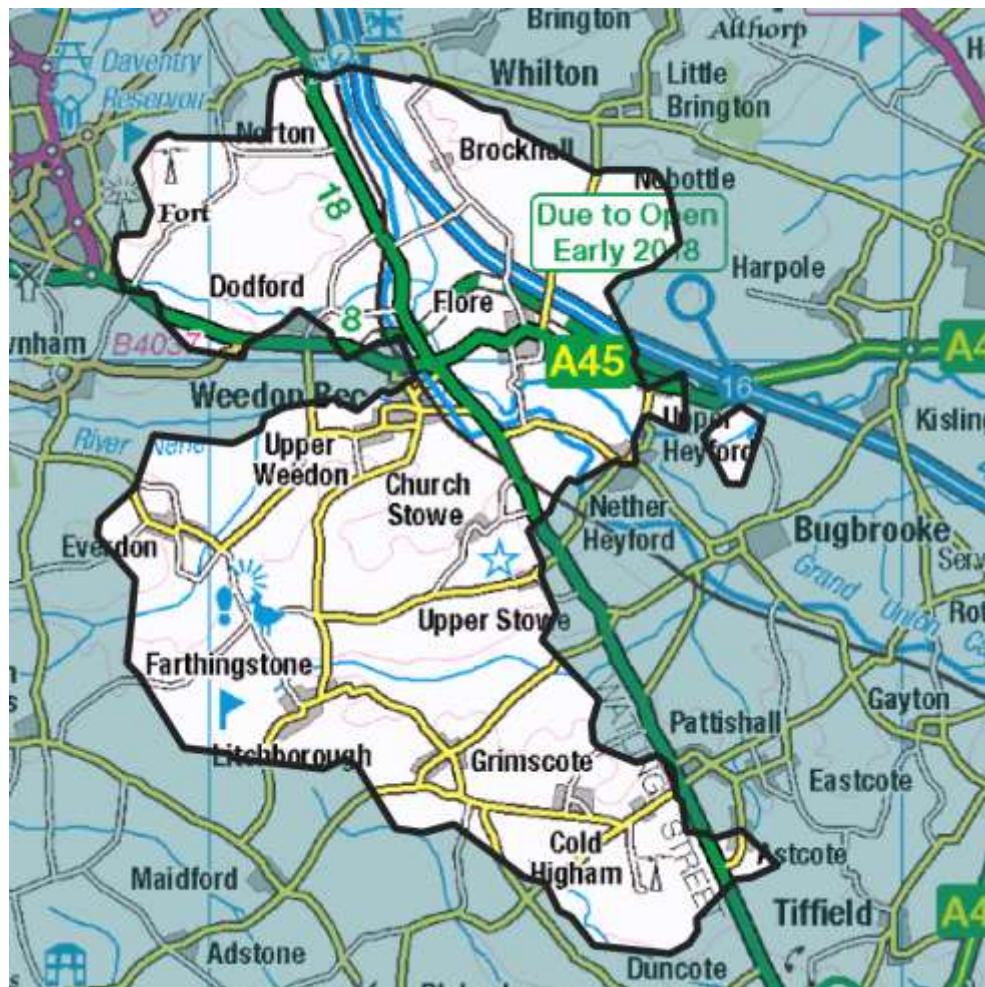
[www.flexiblepower.co.uk/downloads/313](http://www.flexiblepower.co.uk/downloads/313)

Alternatively, if you're viewing this document on a PC, the monthly profiles will be visible as embedded attachments.

[Back to CMZ list](#)



## Flexibility Analysis Report for CMZ\_T4A\_EM\_0021 – Weedon



Products	Season	MW Peak
Secure & Restore	Winter	1.65

More information about this zone:

[https://www.flexiblepower.co.uk/scheme/CMZ\\_T4A\\_EM\\_0021](https://www.flexiblepower.co.uk/scheme/CMZ_T4A_EM_0021)  
is the dedicated scheme page for this zone on the Flexible Power website, here you can view;

- Availability windows
- Monthly profiles
- Service overview
- Valuation tool
- Postcode checker
- Register interest

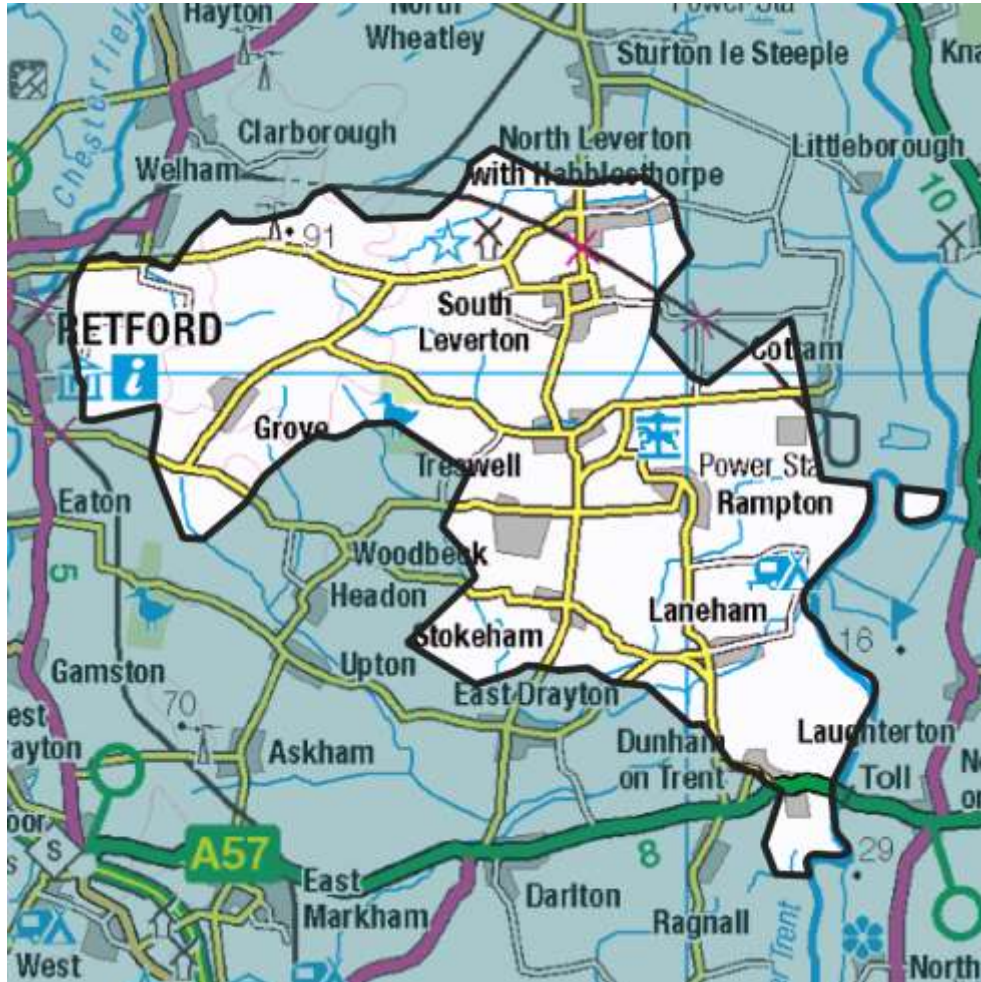
The Monthly profiles can also be downloaded here:

[www.flexiblepower.co.uk/downloads/325](https://www.flexiblepower.co.uk/downloads/325)

Alternatively, if you're viewing this document on a PC, the monthly profiles will be visible as embedded attachments.

[Back to CMZ list](#)

## Flexibility Analysis Report for CMZ\_T4A\_EM\_0020 – Woodbeck



Products	Season	MW Peak
Dynamic & Restore	Winter/Summer	1.57

More information about this zone:

[https://www.flexiblepower.co.uk/scheme/CMZ\\_T4A\\_EM\\_0020](https://www.flexiblepower.co.uk/scheme/CMZ_T4A_EM_0020)

is the dedicated scheme page for this zone on the Flexible Power website, here you can view;

- Availability windows
- Monthly profiles
- Service overview
- Valuation tool
- Postcode checker
- Register interest

The Monthly profiles can also be downloaded here:

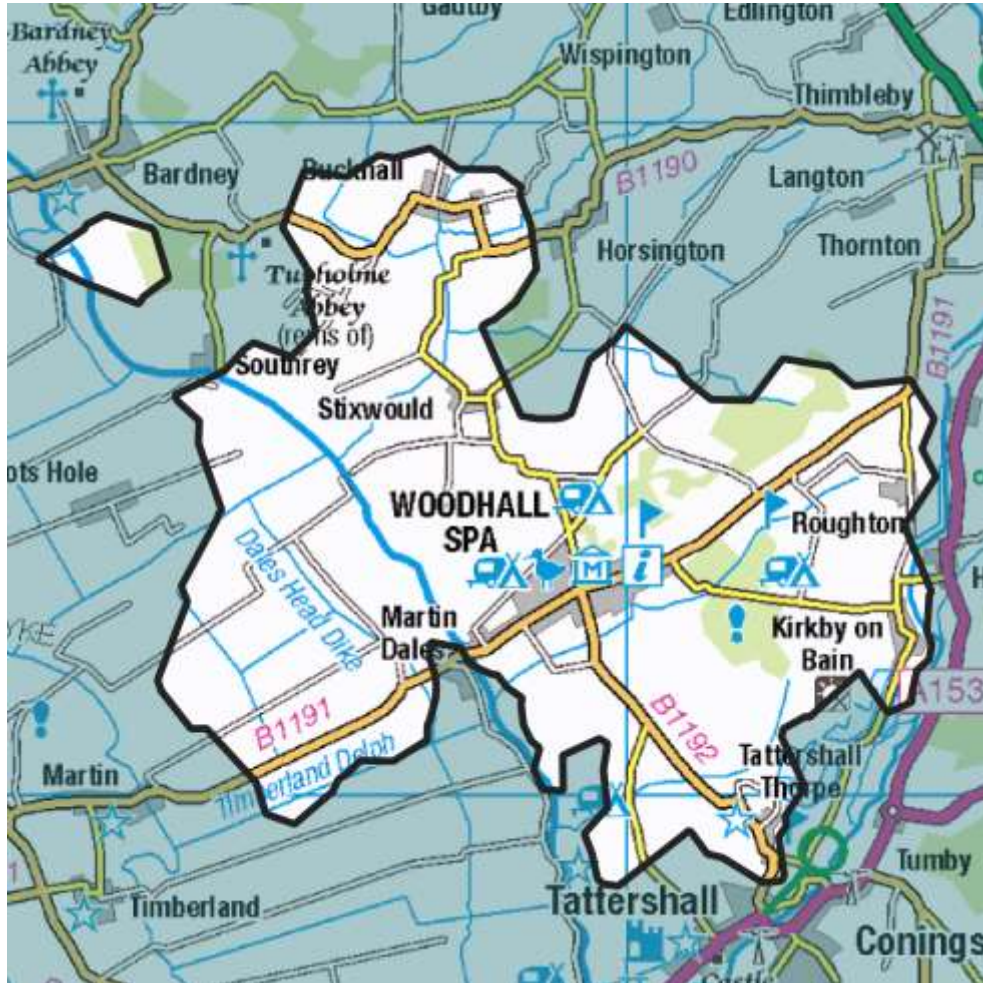
[www.flexiblepower.co.uk/downloads/322](http://www.flexiblepower.co.uk/downloads/322)

Alternatively, if you're viewing this document on a PC, the monthly profiles will be visible as embedded attachments.

[Back to CMZ list](#)



## Flexibility Analysis Report for CMZ\_T3A\_EM\_0003 - Woodhall Spa



Products	Season	MW Peak
Secure & Restore	Winter	0.58

More information about this zone:

[https://www.flexiblepower.co.uk/scheme/CMZ\\_T3A\\_EM\\_0003](https://www.flexiblepower.co.uk/scheme/CMZ_T3A_EM_0003)

is the dedicated scheme page for this zone on the Flexible Power website, here you can view;

- Availability windows
- Monthly profiles
- Service overview
- Valuation tool
- Postcode checker
- Register interest

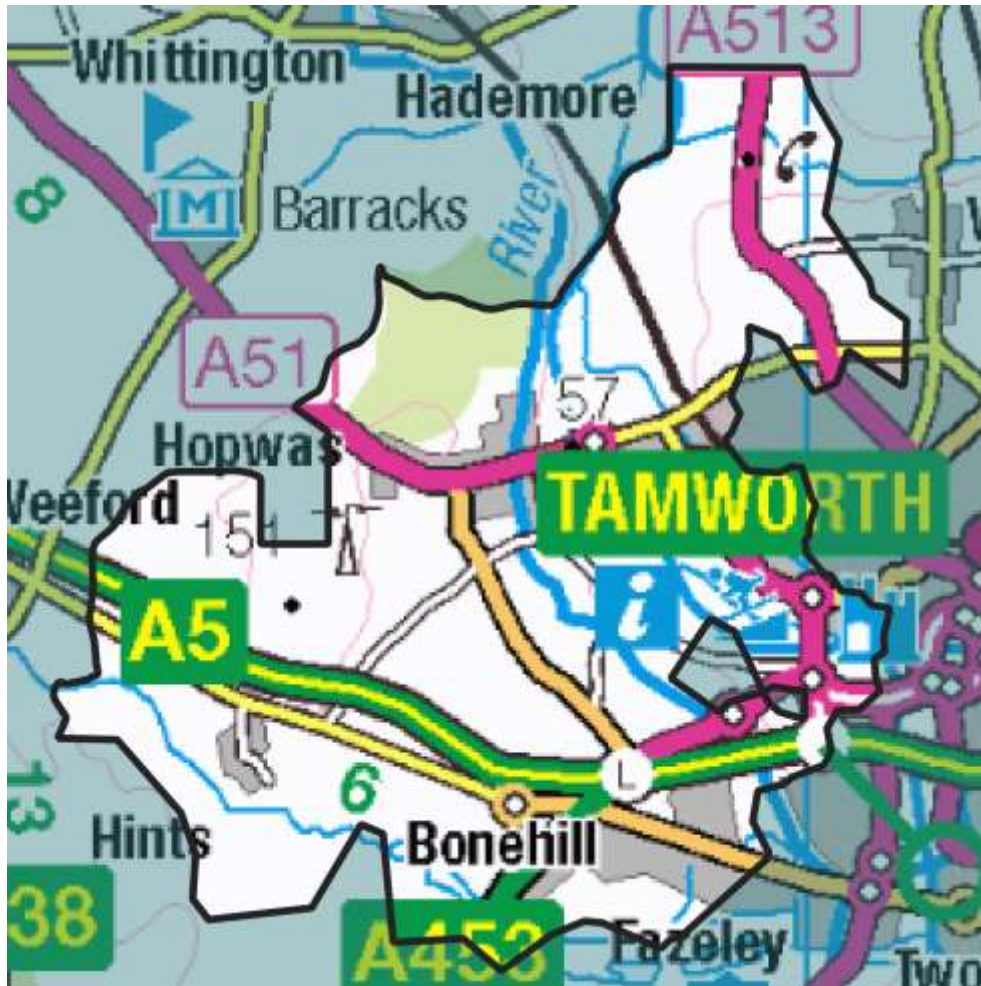
The Monthly profiles can also be downloaded here:

[www.flexiblepower.co.uk/downloads/259](https://www.flexiblepower.co.uk/downloads/259)

Alternatively, if you're viewing this document on a PC, the monthly profiles will be visible as embedded attachments.

[Back to CMZ list](#)

## Flexibility Analysis Report for CMZ\_T4A\_EM\_0009 - Apollo – Tamworth



Products	Season	MW Peak
Secure & Restore	Winter	3.08

More information about this zone:

[https://www.flexiblepower.co.uk/scheme/CMZ\\_T4A\\_EM\\_0009](https://www.flexiblepower.co.uk/scheme/CMZ_T4A_EM_0009)

is the dedicated scheme page for this zone on the Flexible Power website, here you can view;

- Availability windows
- Monthly profiles
- Service overview
- Valuation tool
- Postcode checker
- Register interest

The monthly profiles can be also downloaded here:

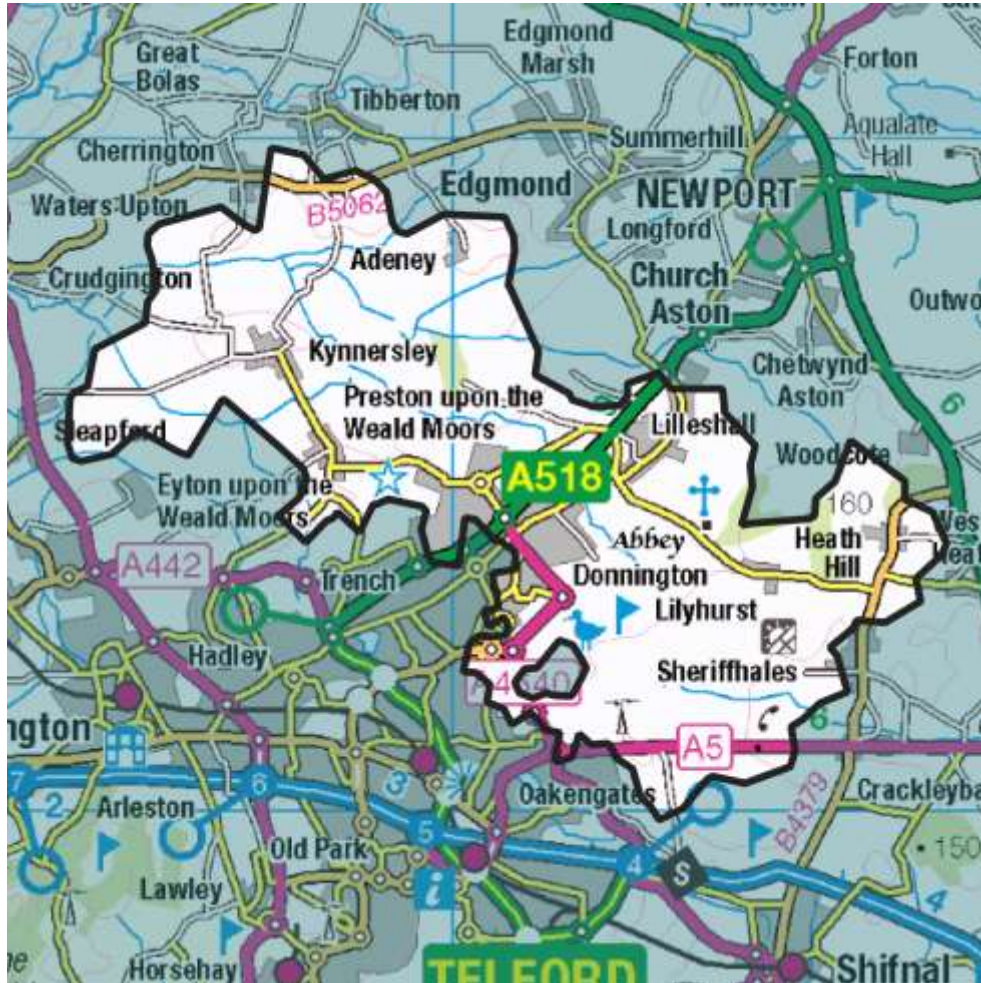
[www.flexiblepower.co.uk/downloads/289](https://www.flexiblepower.co.uk/downloads/289)

Alternatively, if you're viewing this document on a PC, the monthly profiles will be visible as embedded attachments.

[Back to CMZ list](#)



## Flexibility Analysis Report for CMZ\_T3A\_WM\_0003 – Donnington



Products	Season	MW Peak
Dynamic & Restore	Winter/Summer	2.82

More information about this zone:

[https://www.flexiblepower.co.uk/scheme/CMZ\\_T3A\\_WM\\_0003](https://www.flexiblepower.co.uk/scheme/CMZ_T3A_WM_0003)

is the dedicated scheme page for this zone on the Flexible Power website, here you can view;

- Availability windows
- Monthly profiles
- Service overview
- Valuation tool
- Postcode checker
- Register interest

The monthly profiles can be also downloaded here:

[www.flexiblepower.co.uk/downloads/280](https://www.flexiblepower.co.uk/downloads/280)

Alternatively, if you're viewing this document on a PC, the monthly profiles will be visible as embedded attachments.

[Back to CMZ list](#)

## Flexibility Analysis Report for CMZ\_T4A\_WM\_0007 – Meaford



Products	Season	MW Peak
Dynamic & Restore	Winter/Summer	16.64

More information about this zone:

[https://www.flexiblepower.co.uk/scheme/CMZ\\_T4A\\_WM\\_0007](https://www.flexiblepower.co.uk/scheme/CMZ_T4A_WM_0007)

is the dedicated scheme page for this zone on the Flexible Power website, here you can view;

- Availability windows
- Monthly profiles
- Service overview
- Valuation tool
- Postcode checker
- Register interest

The monthly profiles can be also downloaded here:

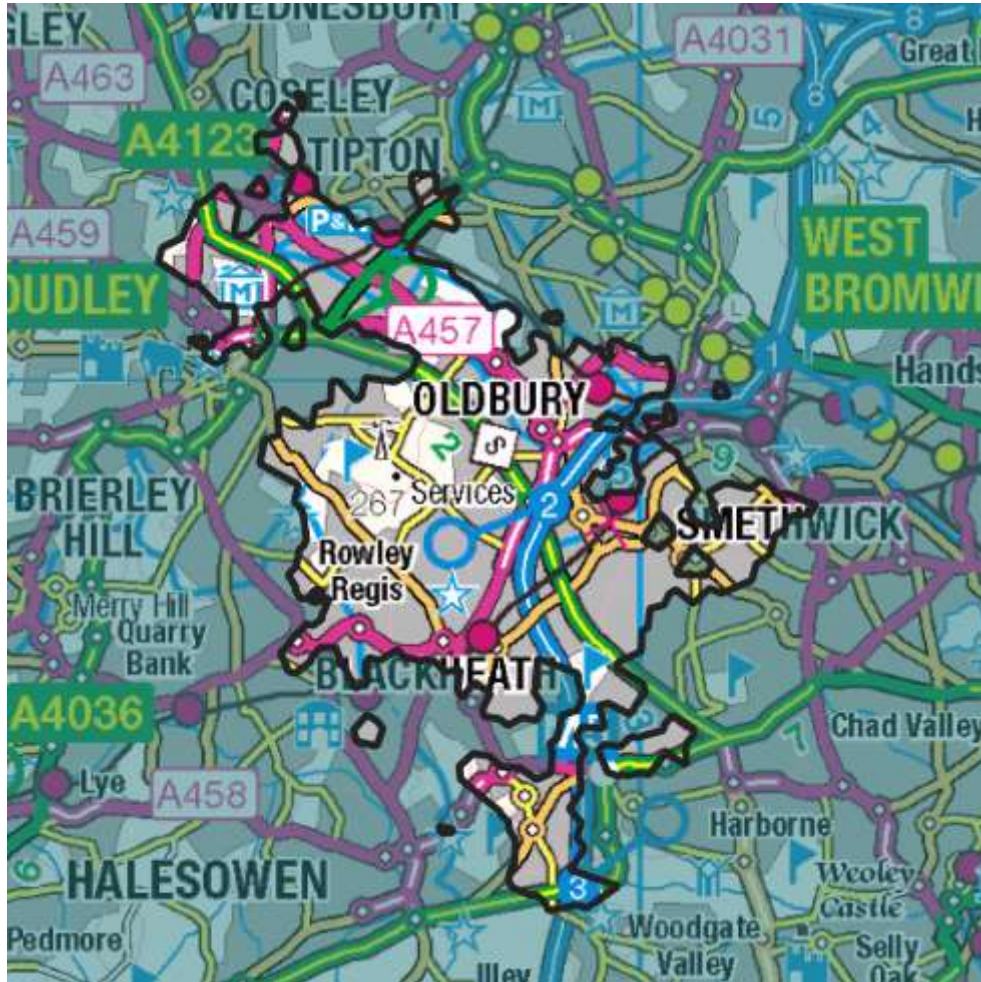
[www.flexiblepower.co.uk/downloads/376](http://www.flexiblepower.co.uk/downloads/376)

Alternatively, if you're viewing this document on a PC, the monthly profiles will be visible as embedded attachments.

[Back to CMZ list](#)



## Flexibility Analysis Report for CMZ\_T4A\_WM\_0005 – Oldbury



Products	Season	MW Peak
Secure & Restore	Winter	10.85

More information about this zone:

[https://www.flexiblepower.co.uk/scheme/CMZ\\_T4A\\_WM\\_0005](https://www.flexiblepower.co.uk/scheme/CMZ_T4A_WM_0005)

is the dedicated scheme page for this zone on the Flexible Power website, here you can view;

- Availability windows
- Monthly profiles
- Service overview
- Valuation tool
- Postcode checker
- Register interest

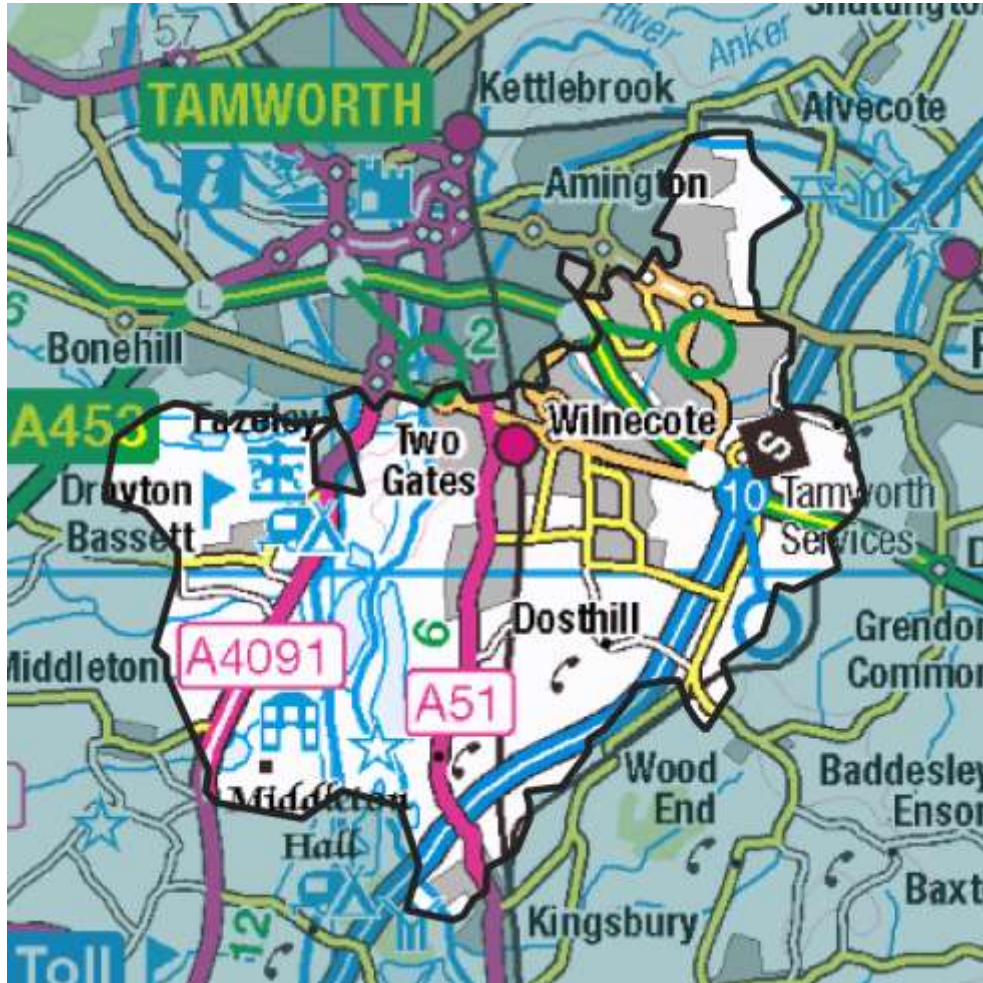
The monthly profiles can be also downloaded here:

[www.flexiblepower.co.uk/downloads/370](https://www.flexiblepower.co.uk/downloads/370)

Alternatively, if you're viewing this document on a PC, the monthly profiles will be visible as embedded attachments.

[Back to CMZ list](#)

## Flexibility Analysis Report for CMZ\_T4A\_EM\_0018 - Tamworth Main



Products	Season	MW Peak
Secure & Restore	Winter	2.96

More information about this zone:

[https://www.flexiblepower.co.uk/scheme/CMZ\\_T4A\\_EM\\_0018](https://www.flexiblepower.co.uk/scheme/CMZ_T4A_EM_0018)

is the dedicated scheme page for this zone on the Flexible Power website, here you can view;

- Availability windows
- Monthly profiles
- Service overview
- Valuation tool
- Postcode checker
- Register interest

The monthly profiles can be also downloaded here:

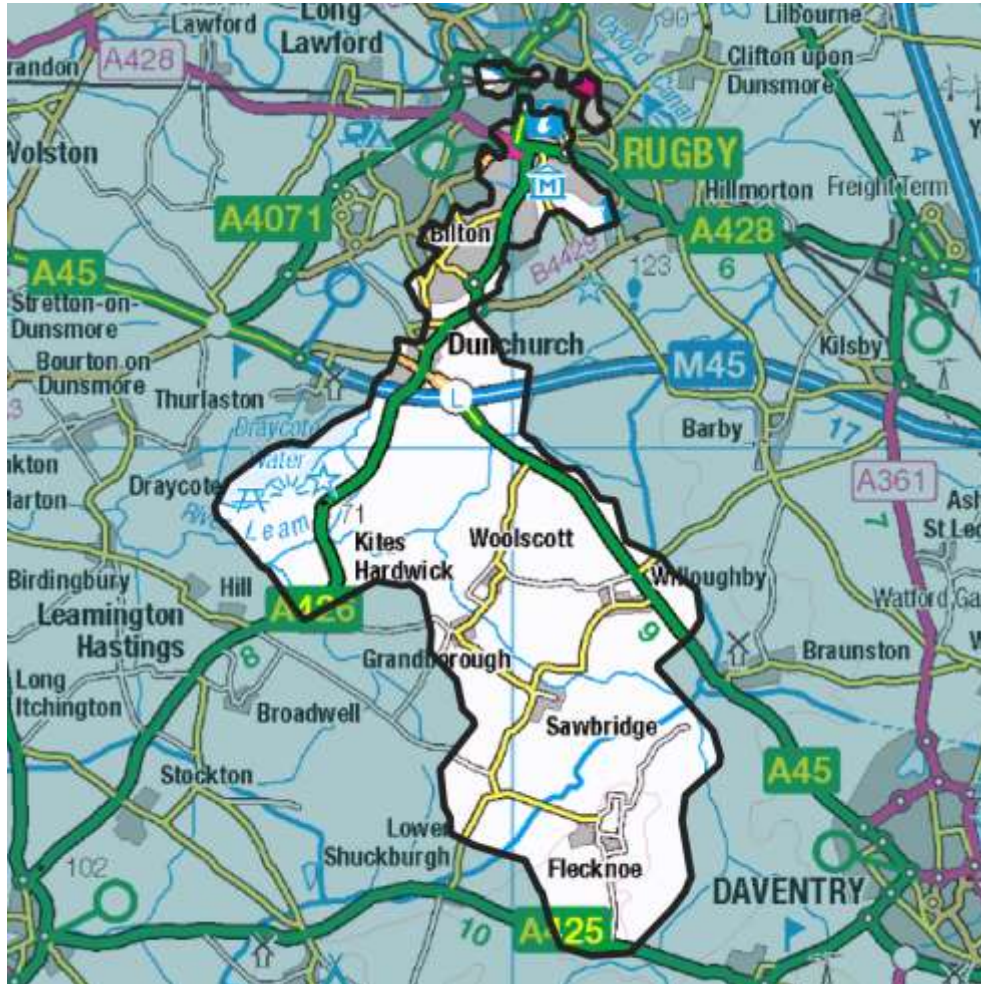
[www.flexiblepower.co.uk/downloads/316](https://www.flexiblepower.co.uk/downloads/316)

Alternatively, if you're viewing this document on a PC, the monthly profiles will be visible as embedded attachments.

[Back to CMZ list](#)



## Flexibility Analysis Report for CMZ\_T4A\_EM\_0019 - Union Street – Rugby



Products	Season	MW Peak
Secure & Restore	Winter	1.14

More information about this zone:

[https://www.flexiblepower.co.uk/scheme/CMZ\\_T4A\\_EM\\_0019](https://www.flexiblepower.co.uk/scheme/CMZ_T4A_EM_0019)

is the dedicated scheme page for this zone on the Flexible Power website, here you can view;

- Availability windows
- Monthly profiles
- Service overview
- Valuation tool
- Postcode checker
- Register interest

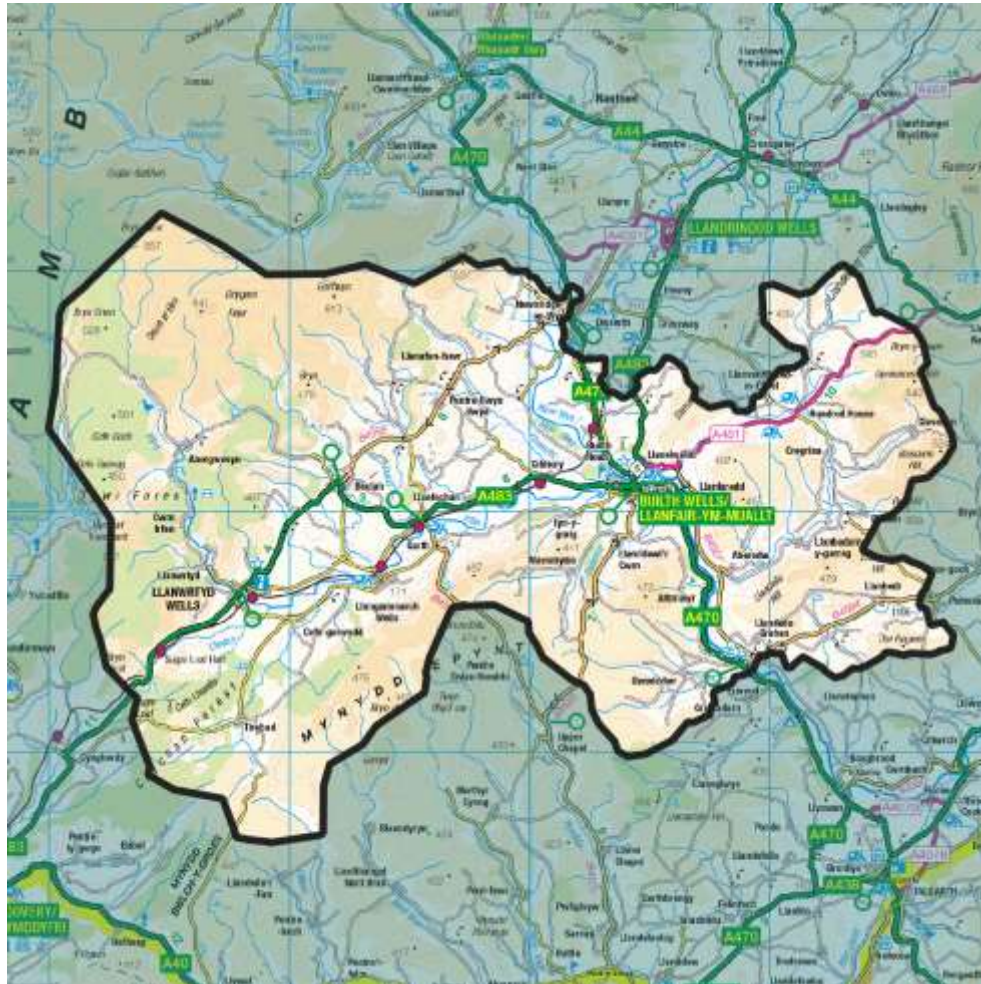
The Monthly profiles can also be downloaded here:

[www.flexiblepower.co.uk/downloads/319](http://www.flexiblepower.co.uk/downloads/319)

Alternatively, if you're viewing this document on a PC, the monthly profiles will be visible as embedded attachments.

[Back to CMZ list](#)

## Flexibility Analysis Report for CMZ\_T4A\_SWA\_0002\_P2 - Abergavenny - Builth Wells



Products	Season	MW Peak
Dynamic & Restore	Winter/Summer	4.47

More information about this zone:

[https://www.flexiblepower.co.uk/scheme/CMZ\\_T4A\\_SWA\\_0002\\_P2](https://www.flexiblepower.co.uk/scheme/CMZ_T4A_SWA_0002_P2) is the dedicated scheme page for this zone on the Flexible Power website, here you can view;

- Availability windows
- Monthly profiles
- Service overview
- Valuation tool
- Postcode checker
- Register interest

The monthly profiles can be also downloaded here:

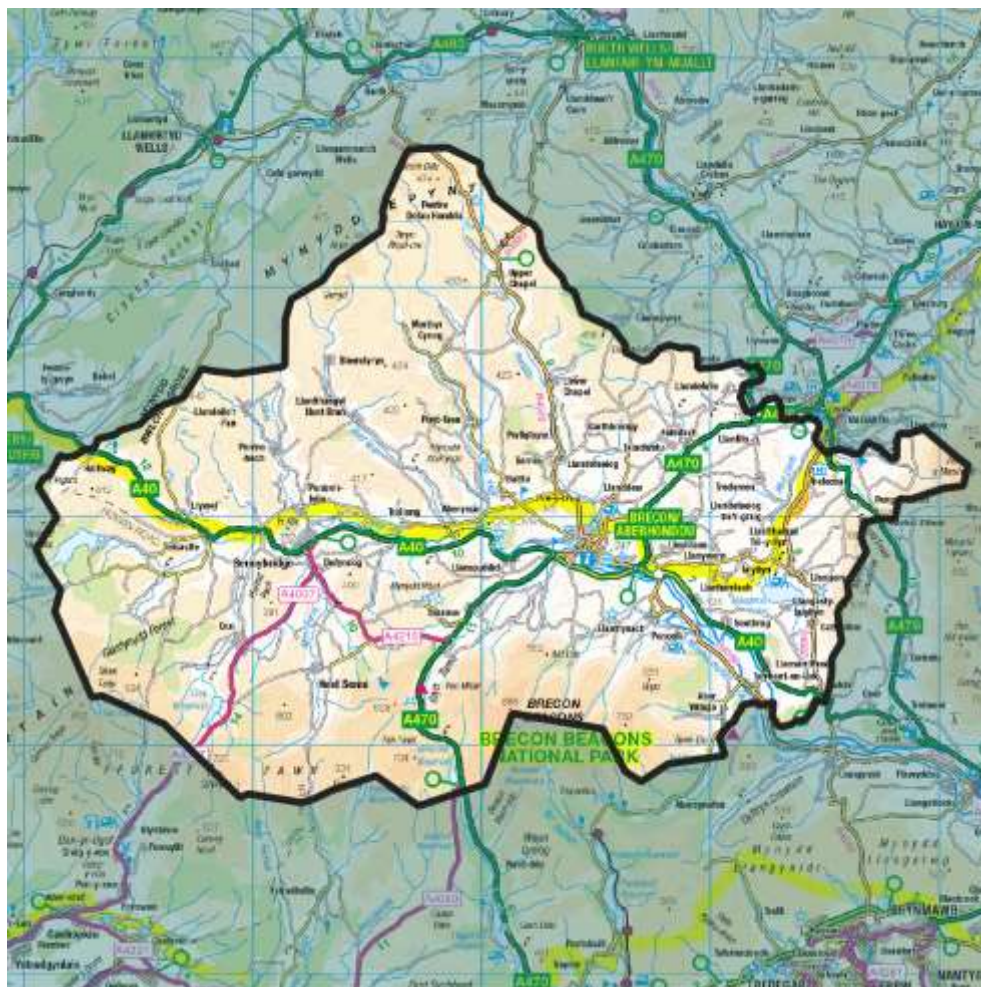
[www.flexiblepower.co.uk/downloads/334](https://www.flexiblepower.co.uk/downloads/334)

Alternatively, if you're viewing this document on a PC, the monthly profiles will be visible as embedded attachments.

[Back to CMZ list](#)



## Flexibility Analysis Report for CMZ\_T4A\_SWA\_0002\_P1 - Abergavenny – Brecon



Products	Season	MW Peak
Dynamic & Restore	Winter/Summer	9.00

More information about this zone:

[https://www.flexiblepower.co.uk/scheme/CMZ\\_T4A\\_SWA\\_0002\\_P1](https://www.flexiblepower.co.uk/scheme/CMZ_T4A_SWA_0002_P1)

is the dedicated scheme page for this zone on the Flexible Power website, here you can view;

- Availability windows
- Monthly profiles
- Service overview
- Valuation tool
- Postcode checker
- Register interest

The monthly profiles can be also downloaded here:

[www.flexiblepower.co.uk/downloads/331](http://www.flexiblepower.co.uk/downloads/331)

Alternatively, if you're viewing this document on a PC, the monthly profiles will be visible as embedded attachments.

[Back to CMZ list](#)

More information about this zone:

is the dedicated scheme page for this zone on the Flexible Power website, here you can view;

- Availability windows
- Monthly profiles
- Service overview
- Valuation tool
- Postcode checker
- Register interest

The monthly profiles can be also downloaded here:

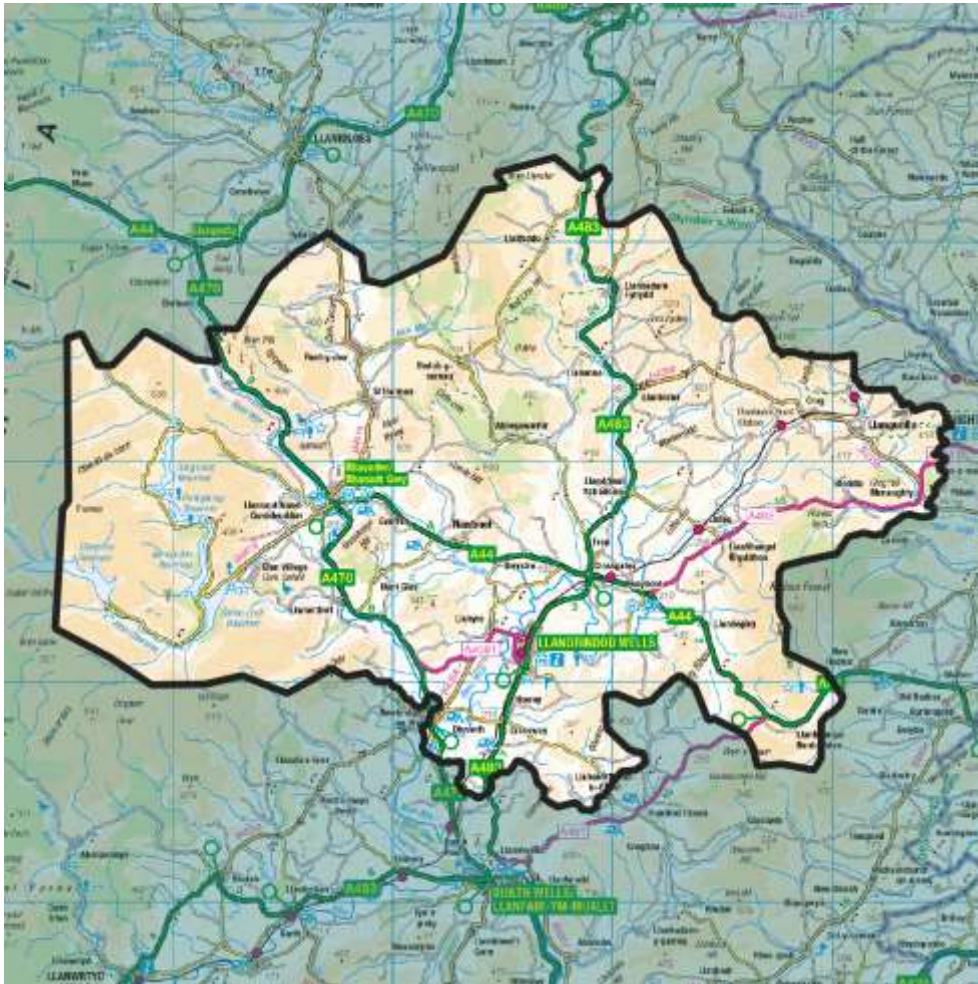
[www.flexiblepower.co.uk/downloads/337](http://www.flexiblepower.co.uk/downloads/337)

Alternatively, if you're viewing this document on a PC, the monthly profiles will be visible as embedded attachments.

[Back to CMZ list](#)



## Flexibility Analysis Report for CMZ\_T4A\_SWA\_0001 - Llandrindod – Rhayader



Products	Season	MW Peak
Dynamic & Restore	Winter/Summer	0.92

More information about this zone:

[https://www.flexiblepower.co.uk/scheme/CMZ\\_T4A\\_SWA\\_0001](https://www.flexiblepower.co.uk/scheme/CMZ_T4A_SWA_0001)  
is the dedicated scheme page for this zone on the Flexible Power website, here you can view;

- Availability windows
- Monthly profiles
- Service overview
- Valuation tool
- Postcode checker
- Register interest

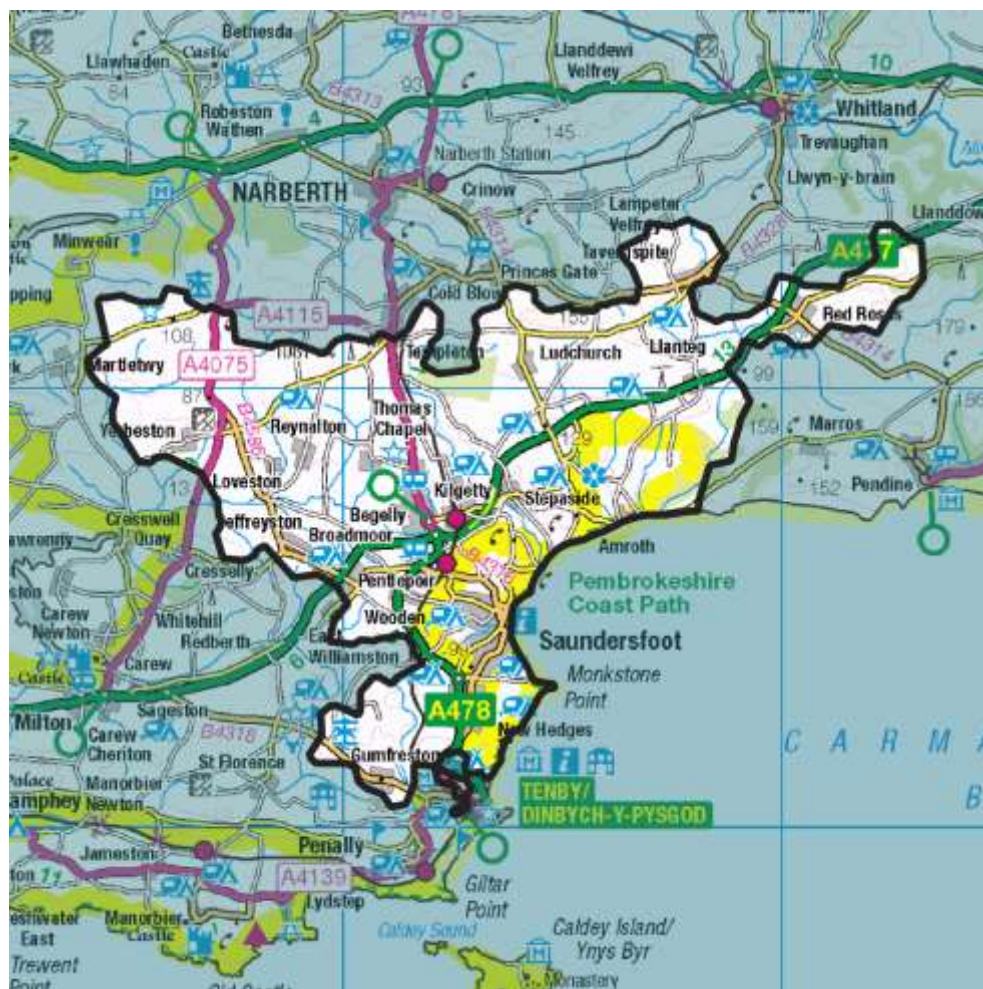
The monthly profiles can be also downloaded here:

[www.flexiblepower.co.uk/downloads/328](https://www.flexiblepower.co.uk/downloads/328)

Alternatively, if you're viewing this document on a PC, the monthly profiles will be visible as embedded attachments.

[Back to CMZ list](#)

## Flexibility Analysis Report for CMZ\_T4A\_SWA\_0003\_P1 - Pembroke – BroadField



Products	Season	MW Peak
Dynamic & Restore	Winter/Summer	2.10

More information about this zone:

[https://www.flexiblepower.co.uk/scheme/CMZ\\_T4A\\_SWA\\_0003\\_P1](https://www.flexiblepower.co.uk/scheme/CMZ_T4A_SWA_0003_P1)

is the dedicated scheme page for this zone on the Flexible Power website, here you can view;

- Availability windows
- Monthly profiles
- Service overview
- Valuation tool
- Postcode checker
- Register interest

The monthly profiles can be also downloaded here:

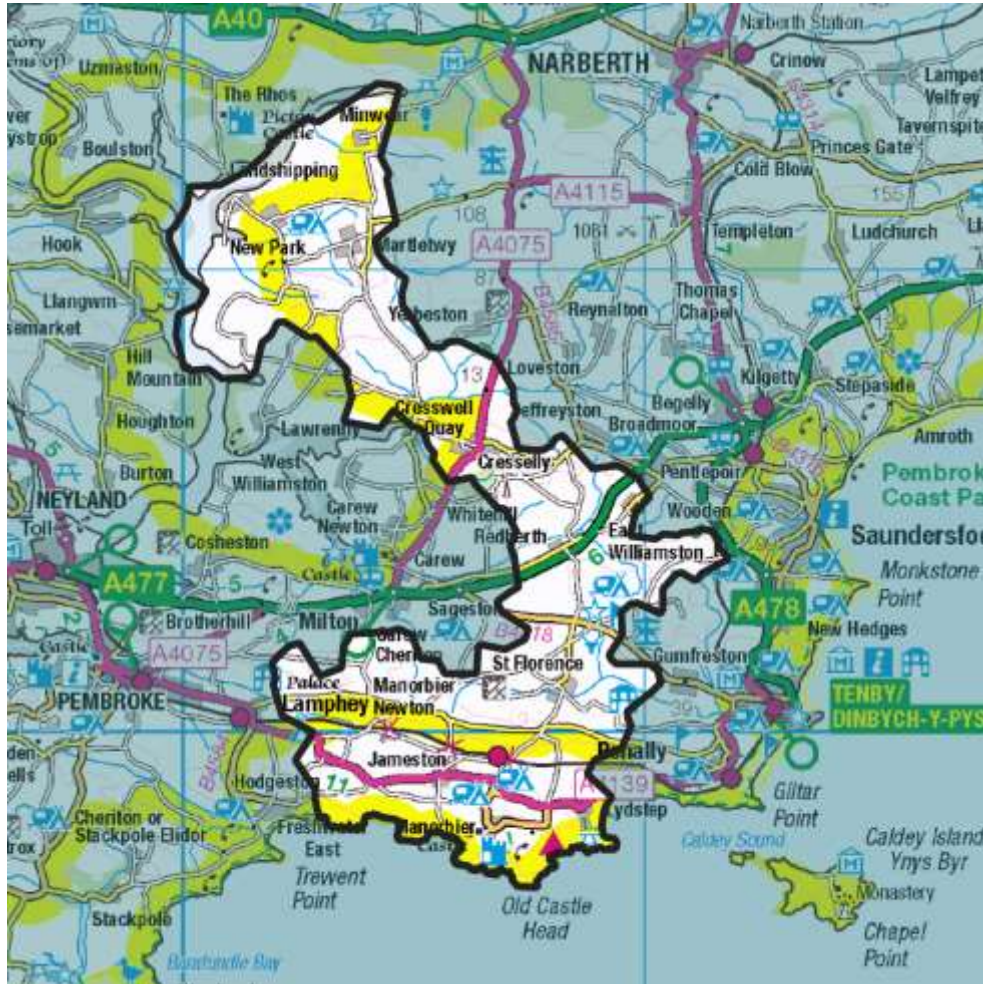
[www.flexiblepower.co.uk/downloads/340](https://www.flexiblepower.co.uk/downloads/340)

Alternatively, if you're viewing this document on a PC, the monthly profiles will be visible as embedded attachments.

[Back to CMZ list](#)



## Flexibility Analysis Report for CMZ\_T4A\_SWA\_0003\_P3 - Pembroke - St Florence



Products	Season	MW Peak
Dynamic & Restore	Winter/Summer	1.13

More information about this zone:

[https://www.flexiblepower.co.uk/scheme/CMZ\\_T4A\\_SWA\\_0003\\_P3](https://www.flexiblepower.co.uk/scheme/CMZ_T4A_SWA_0003_P3)

is the dedicated scheme page for this zone on the Flexible Power website, here you can view;

- Availability windows
- Monthly profiles
- Service overview
- Valuation tool
- Postcode checker
- Register interest

The monthly profiles can be also downloaded here:

[www.flexiblepower.co.uk/downloads/346](https://www.flexiblepower.co.uk/downloads/346)

Alternatively, if you're viewing this document on a PC, the monthly profiles will be visible as embedded attachments.

[Back to CMZ list](#)

## Flexibility Analysis Report for CMZ\_T4A\_SWA\_0003\_P2 - Pembroke – Tenby



Products	Season	MW Peak
Dynamic & Restore	Winter/Summer	1.82

More information about this zone:

[https://www.flexiblepower.co.uk/scheme/CMZ\\_T4A\\_SWA\\_0003\\_P2](https://www.flexiblepower.co.uk/scheme/CMZ_T4A_SWA_0003_P2) is the dedicated scheme page for this zone on the Flexible Power website, here you can view;

- Availability windows
- Monthly profiles
- Service overview
- Valuation tool
- Postcode checker
- Register interest

The monthly profiles can be also downloaded here:

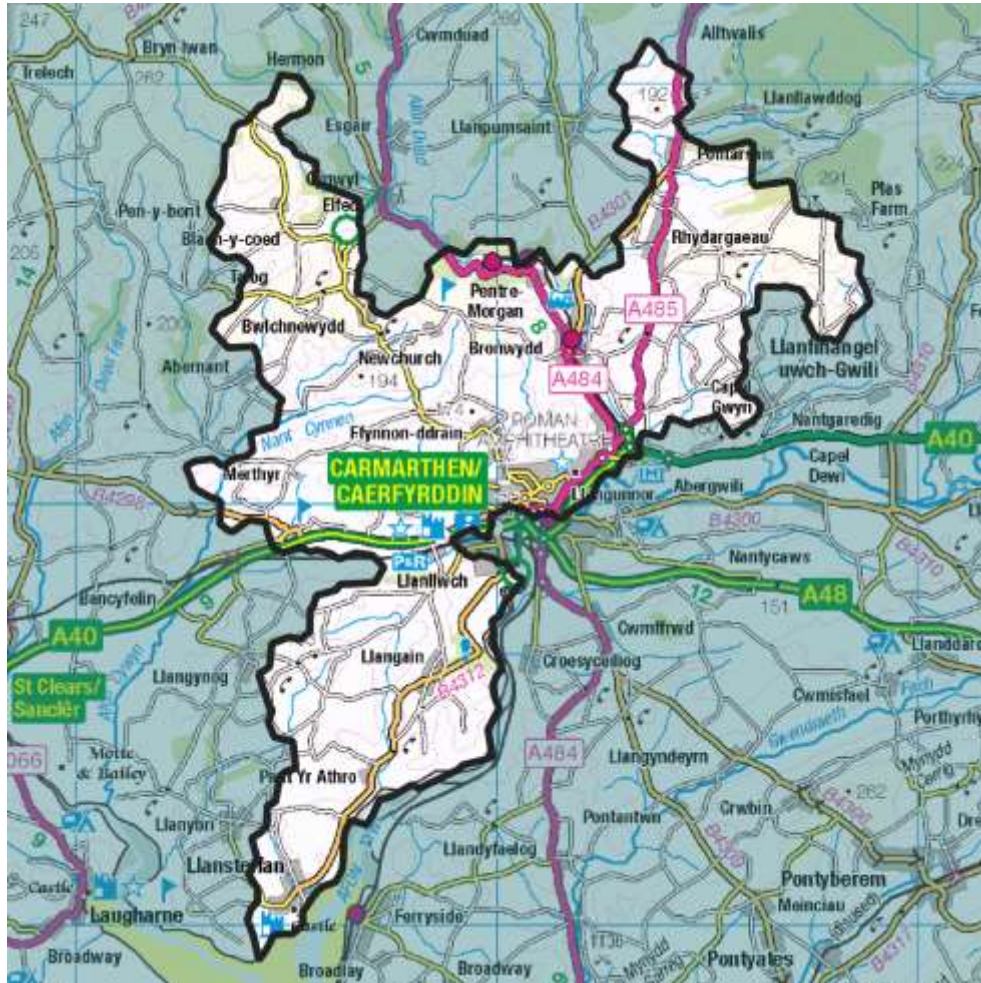
[www.flexiblepower.co.uk/downloads/343](https://www.flexiblepower.co.uk/downloads/343)

Alternatively, if you're viewing this document on a PC, the monthly profiles will be visible as embedded attachments.

[Back to CMZ list](#)



## Flexibility Analysis Report for CMZ\_T4A\_SWA\_0004 – Trevaughan



Products	Season	MW Peak
Secure & Restore	Winter	1.19

More information about this zone:

[https://www.flexiblepower.co.uk/scheme/CMZ\\_T4A\\_SWA\\_0004](https://www.flexiblepower.co.uk/scheme/CMZ_T4A_SWA_0004) is the dedicated scheme page for this zone on the Flexible Power website, here you can view;

- Availability windows
- Monthly profiles
- Service overview
- Valuation tool
- Postcode checker
- Register interest

The monthly profiles can be also downloaded here:

[www.flexiblepower.co.uk/downloads/349](https://www.flexiblepower.co.uk/downloads/349)

Alternatively, if you're viewing this document on a PC, the monthly profiles will be visible as embedded attachments.

[Back to CMZ list](#)

## Flexibility Analysis Report for CMZ\_T3A\_SWE\_0005 - Bridgwater/Street



Products	Season	MW Peak
Dynamic & Restore	Summer	9.63

More information about this zone:

[https://www.flexiblepower.co.uk/scheme/CMZ\\_T3A\\_SWE\\_0005](https://www.flexiblepower.co.uk/scheme/CMZ_T3A_SWE_0005)

is the dedicated scheme page for this zone on the Flexible Power website, here you can view;

- Availability windows
- Monthly profiles
- Service overview
- Valuation tool
- Postcode checker
- Register interest

The monthly profiles can be also downloaded here:

[www.flexiblepower.co.uk/downloads/277](https://www.flexiblepower.co.uk/downloads/277)

Alternatively, if you're viewing this document on a PC, the monthly profiles will be visible as embedded attachments.

[Back to CMZ list](#)



## Flexibility Analysis Report for CMZ\_T2A\_SWE\_0002 - Exeter City



Products	Season	MW Peak
Dynamic & Restore	Winter	9.72

More information about this zone:

[https://www.flexiblepower.co.uk/scheme/CMZ\\_T2A\\_SWE\\_0002](https://www.flexiblepower.co.uk/scheme/CMZ_T2A_SWE_0002)

is the dedicated scheme page for this zone on the Flexible Power website, here you can view;

- Availability windows
- Monthly profiles
- Service overview
- Valuation tool
- Postcode checker
- Register interest

The monthly profiles can be also downloaded here:

[www.flexiblepower.co.uk/downloads/256](https://www.flexiblepower.co.uk/downloads/256)

Alternatively, if you're viewing this document on a PC, the monthly profiles will be visible as embedded attachments.

[Back to CMZ list](#)

## Flexibility Analysis Report for CMZ\_T3B\_SWE\_0007 - Hayle – Camborne



Products	Season	MW Peak
Secure & Restore	Winter	11.20

More information about this zone:

[https://www.flexiblepower.co.uk/scheme/CMZ\\_T3B\\_SWE\\_0007](https://www.flexiblepower.co.uk/scheme/CMZ_T3B_SWE_0007)

is the dedicated scheme page for this zone on the Flexible Power website, here you can view;

- Availability windows
- Monthly profiles
- Service overview
- Valuation tool
- Postcode checker
- Register interest

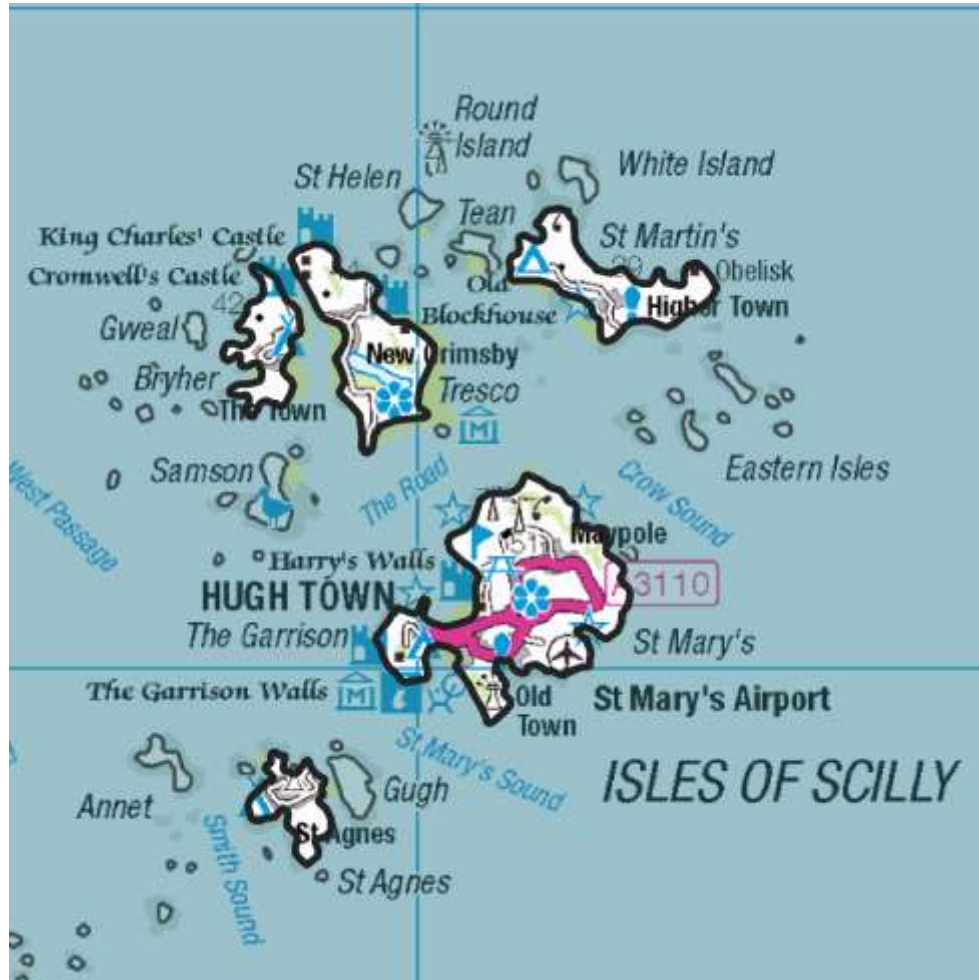
The monthly profiles can be also downloaded here:

[www.flexiblepower.co.uk/downloads/283](https://www.flexiblepower.co.uk/downloads/283)

Alternatively, if you're viewing this document on a PC, the monthly profiles will be visible as embedded attachments.

[Back to CMZ list](#)

## Flexibility Analysis Report for CMZ\_T3B\_SWE\_0008 - Isles of Scilly



Products	Season	MW Peak
Secure & Restore	Winter	0.47

More information about this zone:

[https://www.flexiblepower.co.uk/scheme/CMZ\\_T3B\\_SWE\\_0008](https://www.flexiblepower.co.uk/scheme/CMZ_T3B_SWE_0008)

is the dedicated scheme page for this zone on the Flexible Power website, here you can view;

- Availability windows
- Monthly profiles
- Service overview
- Valuation tool
- Postcode checker
- Register interest

The monthly profiles can be also downloaded here:

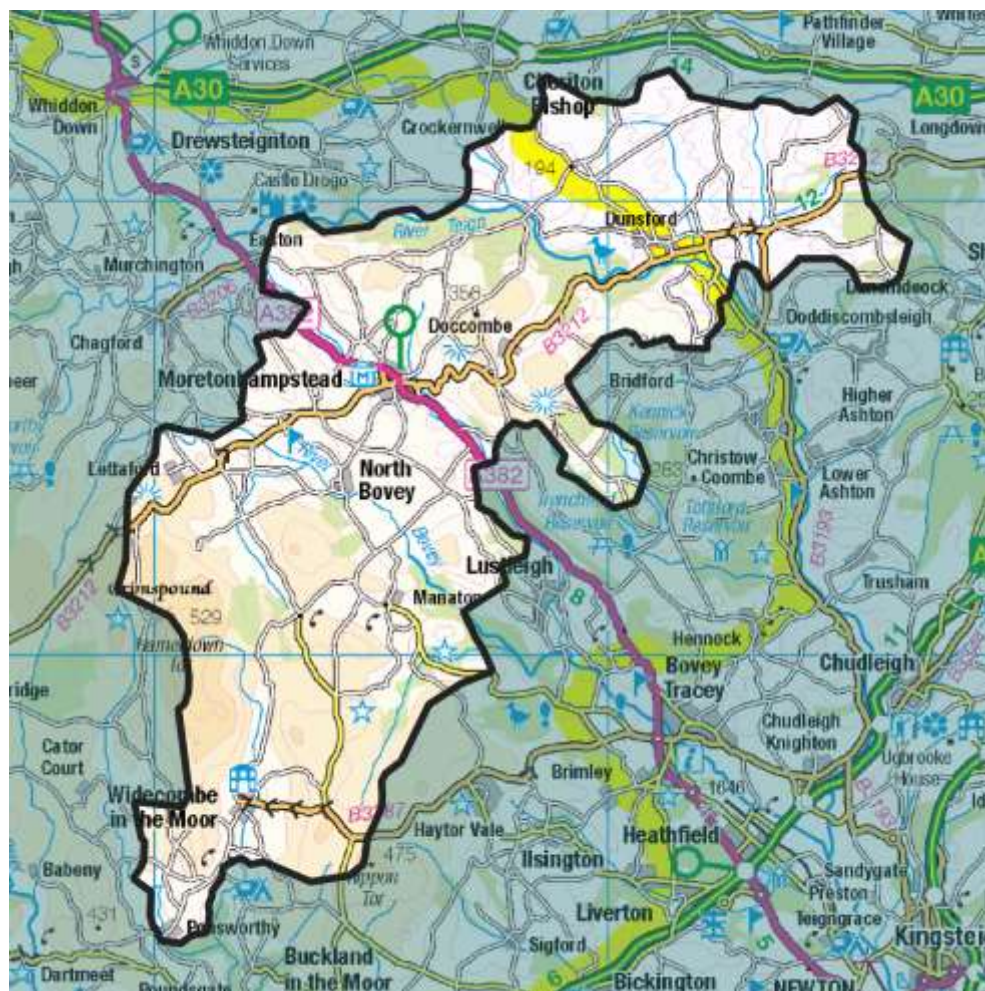
[www.flexiblepower.co.uk/downloads/286](https://www.flexiblepower.co.uk/downloads/286)

Alternatively, if you're viewing this document on a PC, the monthly profiles will be visible as embedded attachments.

[Back to CMZ list](#)



## Flexibility Analysis Report for CMZ\_T4A\_SWE\_0009 – Moretonhampstead



Products	Season	MW Peak
Dynamic & Restore	Winter	1.07

More information about this zone:

[https://www.flexiblepower.co.uk/scheme/CMZ\\_T4A\\_SWE\\_0009](https://www.flexiblepower.co.uk/scheme/CMZ_T4A_SWE_0009)

is the dedicated scheme page for this zone on the Flexible Power website, here you can view;

- Availability windows
- Monthly profiles
- Service overview
- Valuation tool
- Postcode checker
- Register interest

The monthly profiles can be also downloaded here:

[www.flexiblepower.co.uk/downloads/352](https://www.flexiblepower.co.uk/downloads/352)

Alternatively, if you're viewing this document on a PC, the monthly profiles will be visible as embedded attachments.

[Back to CMZ list](#)



## Flexibility Analysis Report for CMZ\_T3A\_SWE\_0003 - Newton Abbot



Products	Season	MW Peak
Dynamic & Restore	Winter	10.68

More information about this zone:

[https://www.flexiblepower.co.uk/scheme/CMZ\\_T3A\\_SWE\\_0003](https://www.flexiblepower.co.uk/scheme/CMZ_T3A_SWE_0003)

is the dedicated scheme page for this zone on the Flexible Power website, here you can view;

- Availability windows
- Monthly profiles
- Service overview
- Valuation tool
- Postcode checker
- Register interest

The monthly profiles can be also downloaded here:

[www.flexiblepower.co.uk/downloads/271](https://www.flexiblepower.co.uk/downloads/271)

Alternatively, if you're viewing this document on a PC, the monthly profiles will be visible as embedded attachments.

[Back to CMZ list](#)

## Flexibility Analysis Report for CMZ\_T2A\_SWE\_0001 - Plymouth/South Hams



Products	Season	MW Peak
Dynamic & Restore	Summer	41.92

More information about this zone:

[https://www.flexiblepower.co.uk/scheme/CMZ\\_T2A\\_SWE\\_0001](https://www.flexiblepower.co.uk/scheme/CMZ_T2A_SWE_0001)

is the dedicated scheme page for this zone on the Flexible Power website, here you can view;

- Availability windows
- Monthly profiles
- Service overview
- Valuation tool
- Postcode checker
- Register interest

The monthly profiles can be also downloaded here:

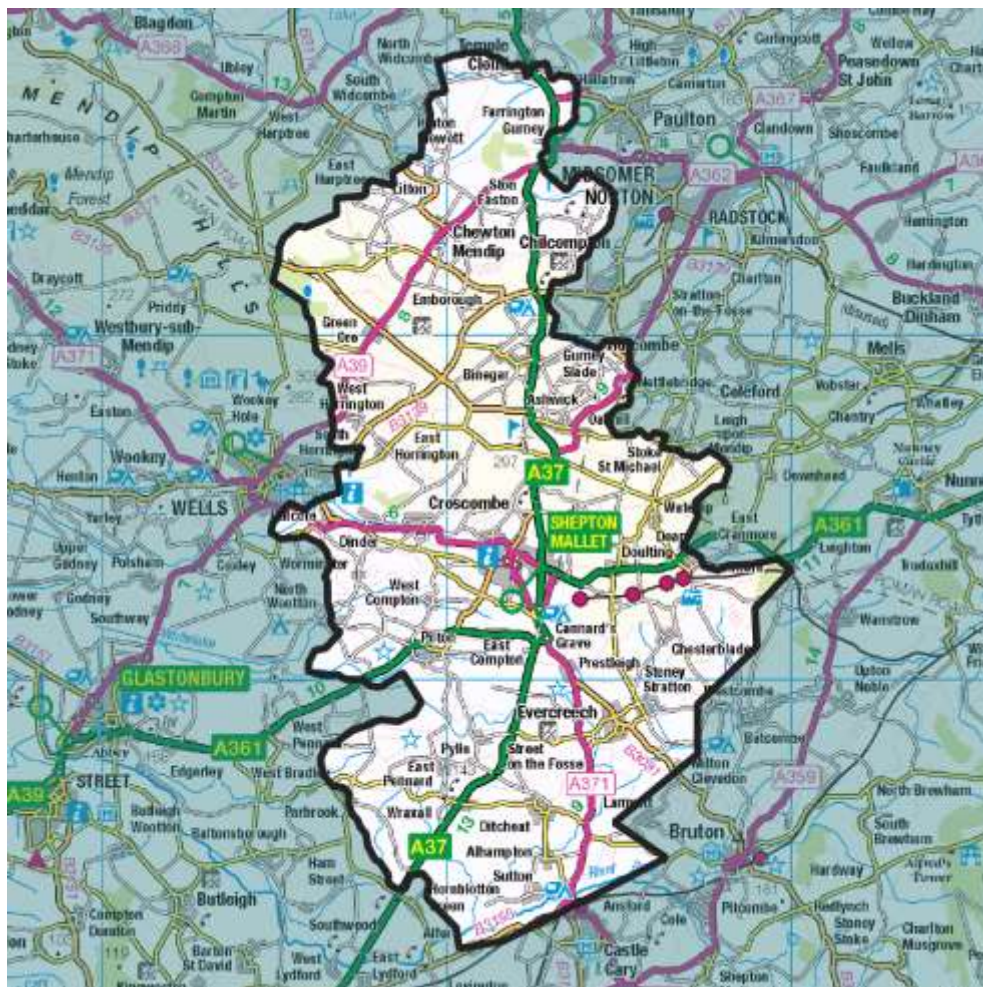
[www.flexiblepower.co.uk/downloads/253](http://www.flexiblepower.co.uk/downloads/253)

Alternatively, if you're viewing this document on a PC, the monthly profiles will be visible as embedded attachments.

[Back to CMZ list](#)



## Flexibility Analysis Report for CMZ\_T3A\_SWE\_0004 – Radstock



Products	Season	MW Peak
Dynamic & Restore	Winter/Summer	3.26

More information about this zone:

[https://www.flexiblepower.co.uk/scheme/CMZ\\_T3A\\_SWE\\_0004](https://www.flexiblepower.co.uk/scheme/CMZ_T3A_SWE_0004)

is the dedicated scheme page for this zone on the Flexible Power website, here you can view;

- Availability windows
- Monthly profiles
- Service overview
- Valuation tool
- Postcode checker
- Register interest

The monthly profiles can be also downloaded here:

[www.flexiblepower.co.uk/downloads/274](http://www.flexiblepower.co.uk/downloads/274)

Alternatively, if you're viewing this document on a PC, the monthly profiles will be visible as embedded attachments.

[Back to CMZ list](#)

## Flexibility Analysis Report for CMZ\_T4A\_SWE\_0011 – Stokenham



Products	Season	MW Peak
Secure & Restore	Winter	0.78

More information about this zone:

[https://www.flexiblepower.co.uk/scheme/CMZ\\_T4A\\_SWE\\_0011](https://www.flexiblepower.co.uk/scheme/CMZ_T4A_SWE_0011) is the dedicated scheme page for this zone on the Flexible Power website, here you can view;

- Availability windows
- Monthly profiles
- Service overview
- Valuation tool
- Postcode checker
- Register interest

The monthly profiles can be also downloaded here:

[www.flexiblepower.co.uk/downloads/358](https://www.flexiblepower.co.uk/downloads/358)

Alternatively, if you're viewing this document on a PC, the monthly profiles will be visible as embedded attachments.

[Back to CMZ list](#)



## Flexibility Analysis Report for CMZ\_T4A\_SWE\_0012 - Taunton GSP



Products	Season	MW Peak
Dynamic & Restore	Winter	68.41

More information about this zone:

[https://www.flexiblepower.co.uk/scheme/CMZ\\_T4A\\_SWE\\_0012](https://www.flexiblepower.co.uk/scheme/CMZ_T4A_SWE_0012)

is the dedicated scheme page for this zone on the Flexible Power website, here you can view;

- Availability windows
- Monthly profiles
- Service overview
- Valuation tool
- Postcode checker
- Register interest

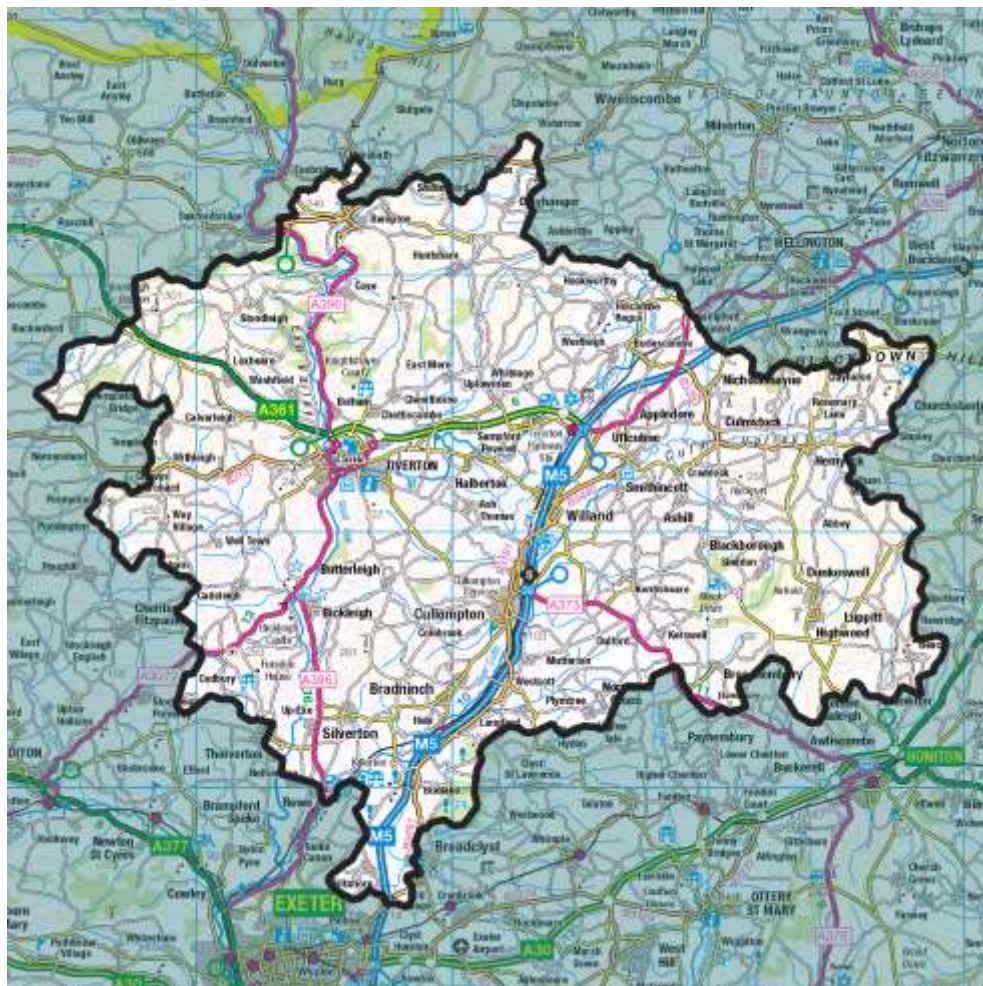
The monthly profiles can be also downloaded here:

[www.flexiblepower.co.uk/downloads/361](http://www.flexiblepower.co.uk/downloads/361)

Alternatively, if you're viewing this document on a PC, the monthly profiles will be visible as embedded attachments.

[Back to CMZ list](#)

## Flexibility Analysis Report for CMZ\_T4A\_SWE\_0010 – Tiverton



Products	Season	MW Peak
Dynamic & Restore	Winter/Summer	9.88

More information about this zone:

[https://www.flexiblepower.co.uk/scheme/CMZ\\_T4A\\_SWE\\_0010](https://www.flexiblepower.co.uk/scheme/CMZ_T4A_SWE_0010)

is the dedicated scheme page for this zone on the Flexible Power website, here you can view;

- Availability windows
- Monthly profiles
- Service overview
- Valuation tool
- Postcode checker
- Register interest

The monthly profiles can be also downloaded here:

[www.flexiblepower.co.uk/downloads/355](http://www.flexiblepower.co.uk/downloads/355)

Alternatively, if you're viewing this document on a PC, the monthly profiles will be visible as embedded attachments.

[Back to CMZ list](#)



# Flexibility Analysis Report for CMZ\_T4A\_SWE\_0013 - Weston Super Mare



Products	Season	MW Peak
Secure & Restore	Winter	3.76

More information about this zone:

[https://www.flexiblepower.co.uk/scheme/CMZ\\_T4A\\_SWE\\_0013](https://www.flexiblepower.co.uk/scheme/CMZ_T4A_SWE_0013)

is the dedicated scheme page for this zone on the Flexible Power website, here you can view;

- Availability windows
- Monthly profiles
- Service overview
- Valuation tool
- Postcode checker
- Register interest

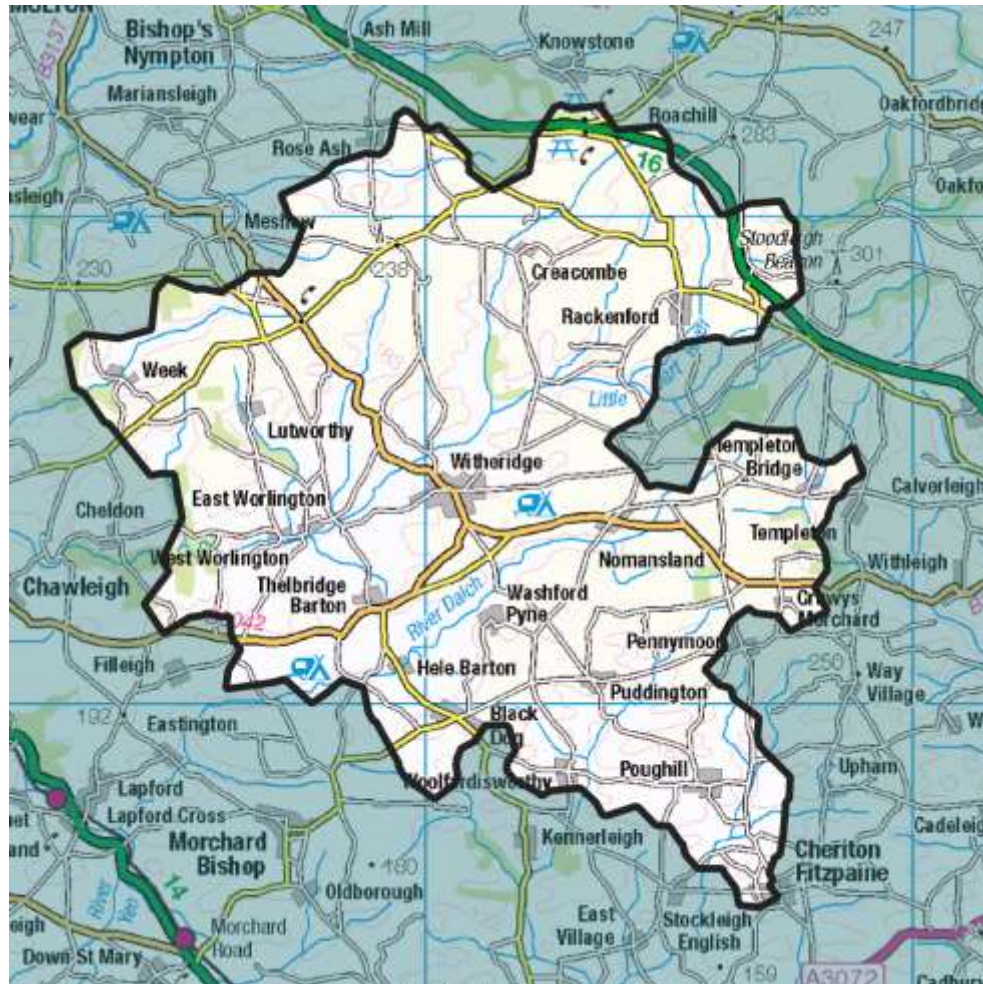
The monthly profiles can be also downloaded here:

[www.flexiblepower.co.uk/downloads/364](http://www.flexiblepower.co.uk/downloads/364)

Alternatively, if you're viewing this document on a PC, the monthly profiles will be visible as embedded attachments.

[Back to CMZ list](#)

## Flexibility Analysis Report for CMZ\_T4A\_SWE\_0014 - Witheridge



Products	Season	MW Peak
Secure & Restore	Winter	0.86

More information about this zone:

[https://www.flexiblepower.co.uk/scheme/CMZ\\_T4A\\_SWE\\_0014](https://www.flexiblepower.co.uk/scheme/CMZ_T4A_SWE_0014)

is the dedicated scheme page for this zone on the Flexible Power website, here you can view;

- Availability windows
- Monthly profiles
- Service overview
- Valuation tool
- Postcode checker
- Register interest

The monthly profiles can be also downloaded here:

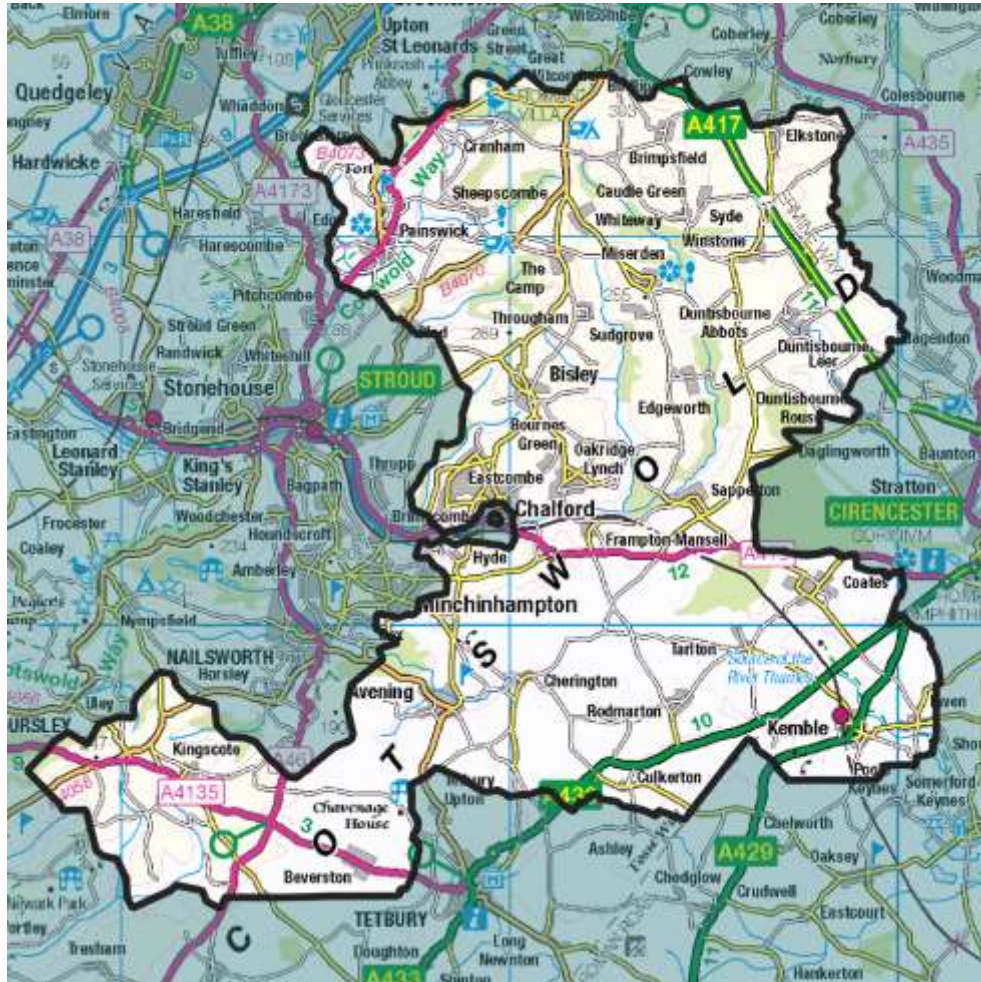
[www.flexiblepower.co.uk/downloads/367](https://www.flexiblepower.co.uk/downloads/367)

Alternatively, if you're viewing this document on a PC, the monthly profiles will be visible as embedded attachments.

[Back to CMZ list](#)



## Flexibility Analysis Report for CMZ\_T4A\_WM\_0006 – Brimscombe



Products	Season	MW Peak
Dynamic & Restore	Winter	4.15

More information about this zone:

[https://www.flexiblepower.co.uk/scheme/CMZ\\_T4A\\_WM\\_0006](https://www.flexiblepower.co.uk/scheme/CMZ_T4A_WM_0006)

is the dedicated scheme page for this zone on the Flexible Power website, here you can view;

- Availability windows
- Monthly profiles
- Service overview
- Valuation tool
- Postcode checker
- Register interest

The monthly profiles can be also downloaded here:

[www.flexiblepower.co.uk/downloads/373](https://www.flexiblepower.co.uk/downloads/373)

Alternatively, if you're viewing this document on a PC, the monthly profiles will be visible as embedded attachments.

[Back to CMZ list](#)

## Section 6 – Sources of further information

WPD has created the Flexible Power brand to deliver the procurement of demand response services. The Flexible Power website is dedicated to providing visibility of the services WPD is looking to procure, it contains detailed information about active CMZs and supporting documentation including; the ENA's DSO service descriptions, the process for declaration and dispatch, payment methodology, the CMZ Terms & Conditions, API requirements.

The website can be viewed at [www.flexiblepower.co.uk](http://www.flexiblepower.co.uk).

Should you require any further information please contact the Flexible Power team: [WPDFlexiblePower@westernpower.co.uk](mailto:WPDFlexiblePower@westernpower.co.uk).