

Flexible Power Procurement Requirements.

**2020 Procurement Cycle 2 –
Issued June 2020**



Purpose of this document

This document provides detailed information on the Constraint Management Zones (CMZs) Western Power Distribution intends to procure demand response services for within its second procurement cycle of 2020.

This document is split into the following sections:

Section 1	Introduction
Section 2	The process we will use to procure these services
Section 3	Minimum eligibility criteria
Section 4	Procurement cycle 2 CMZ Summary table
Section 5	Detailed information on each CMZs requirement
Section 6	Sources of further information

Section 1 – Introduction

Background

Western Power Distribution (WPD) is the electricity distribution network operation for the Midlands, South West & Wales. Its network delivers electricity over a 55,500 square kilometre service area to over 7.9 million customers.

Access to demand response services can increase WPD's ability to accommodate demand without having to build a larger network. This means WPD can reduce overall network expenditure, resulting in a wider saving to all WPDs customers.

Flexible Power is the customer facing brand created by WPD to deliver the procurement of demand response services.

Description of the services we intend to procure

WPD recognises that within its distribution area many electricity consumers have the potential to decrease demand or absorb generation by being flexible with their consumption and on-site generation. Where WPD has a known constraint on its network, it wishes to enter into contract with these consumers which will allow WPD to utilise this demand and generation flexibility in return for a payment. This type of arrangement is widely referred to as demand response.

Constraints on WPDs network are confined to specific geographical locations, WPD defines these locations as Constraint Management Zones (CMZs). WPD will be seeking to procure demand response services within CMZs it has identified and published on its [Flexible Power website](#). The website will provide a map of the CMZs location, a postcode finder to allow potential demand suppliers to confirm their site is within the CMZ and the operational window the demand response will be required in. The operational window will detail; the time of year WPD will require the demand response, the time of day WPD will require the demand response and a forecast of the total MWhs WPD anticipate needing within the window. Operation windows will generally be seasonal to support the constraints within the summer and winter demand peaks. Contracts will be awarded for the minimum of 1 year, with the option to extend into further years should the CMZ have ongoing requirements. WPD may decide to award multiple contracts within a CMZ to meet its peak MW requirement.

WPD will procure demand response services in alignment with the services described in ENA'S Open Networks Project DSO Service Definitions document [ONSWSP210SEP18](#).

Section 2 – The process we will use to procure these services

WPD will maintain a Dynamic Purchasing System (DPS) for its demand response requirements. The DPS will hold records of all potential suppliers that have passed a Pre-Qualification Questionnaire (PQQ) to ensure they meet the minimum eligibility criteria described in section 3. The PQQ does not commit either party to service provision. The PQQ will also ask for site information which will support WPD's assessment of zone viability, and inform which zones proceed to full procurement.

In order to join the DPS, interested parties will be required to first register their interest via WPD's Periodic Indicative Notice (PIN). All parties who respond to the PIN throughout will then be asked to complete the PQQ. Parties who pass the PQQ stage will be added to the DPS, these parties will receive an Invitation to Tender (ITT) to all of WPD's upcoming Demand Response requirements.

DPS registration can be accessed here: <https://rfxwp.westernpower.co.uk/ECE>.

The timetable for this cycle's procurement window is detailed below. Please note, WPD reserves the right to withdraw or add procurement at any time throughout the year.

2020 Procurement cycle 2

29th June 2020 – Proposed CMZs published

3rd August 2020 – Tender issued to all participants accepted onto the DPS

11th September 2020 – Tender Deadline

5th October 2020 – Procurement results

2020 Procurement cycle 1 completed in April 2020. The results can be found [here](#).

Section 3 – Minimum eligibility criteria

To be successfully registered on the DPS parties must meet the following eligibility criteria:

- Completion of all mandatory sections of the PQQ

For a site to be successfully awarded a contract it must meet the following criteria:

- All participating asset or aggregated group of assets must be within an active CMZ.
- All participating asset or aggregated group of assets must be able to provide minute by minute metering data.
- All participating asset or aggregated group of assets must be able to respond within 15 minutes of receipt of a dispatch signal and hold the response for at least 1 hour.
- Contracted providers will be required to build an [Application Programme Interface](#) (API), through which the asset or aggregated group of assets will receive dispatch signals and meter data will be issued to WPD.
- All participating asset or aggregated group of assets must be built or have a connection agreement with final milestone before the CMZs operating window.
- Provision of the service must not put the participant in breach of other agreements (e.g. connection agreements...).
- Acceptance of WPDs CMZ Terms & Conditions

Section 4 – 2020 Cycle 2 CMZ Summary

WPD's 2020 cycle 2 demand respond requirements are across 45 CMZs, totalling 302MW. This table summarises each CMZ WPD intends to include within its first 2020 procurement cycle.

Key

D↓	Demand turn-down service required
G↑	Generation turn-up service required
D↑	Demand turn-up service required
G↓	Generation turn-down service required

Zone Name	Zone Location	Applicable Products	Response Type	MW Peak	Season
East Midlands					
Alfreton	Derbyshire	Secure	D↓ G↑	4.33	Summer
Ashby/Willesley	Staffordshire	Secure	D↓ G↑	2.16	Winter
Apollo - Tamworth	Leicestershire	Secure	D↓ G↑	1.40	Winter
Chesterfield Main	Chesterfield	Dynamic	D↓ G↑	23.53	Winter
Chesterfield GSP	Chesterfield	Secure	D↓ G↑	1.40	Winter
Clowne	Mansfield	Dynamic	D↓ G↑	0.95	Winter
Coalville	Leicestershire	Dynamic	D↓ G↑	26.71	Winter/Summer

<u>Grassmoor</u>	Chesterfield	Secure	D↓ G↑	2.27	Winter/Summer
<u>Hawton</u>	Nottinghamshire	Dynamic	O↑ G↓	5.06	Summer
<u>Hinckley</u>	Leicestershire	Dynamic	D↓ G↑	5.65	Winter/Summer
<u>Lincoln – Anderson Lane</u>	Lincolnshire	Secure	D↓ G↑	5.35	Winter
<u>Lincoln - Beevor Street</u>	Lincolnshire	Dynamic	D↓ G↑	3.03	Winter/Summer
<u>Lincoln - North Hykeham</u>	Lincolnshire	Dynamic	D↓ G↑	7.92	Winter
<u>Mantle Lane</u>	Leicestershire	Dynamic	D↓ G↑	5.58	Winter/Summer
<u>Nailstone</u>	Nuneaton	Dynamic	D↓ G↑	4.44	Winter/Summer
<u>Tamworth Main</u>	Staffordshire	Secure	D↓ G↑	2.04	Winter
<u>Union Street - Rugby</u>	Warwickshire	Secure	D↓ G↑	0.83	Winter
<u>Weedon</u>	Northampton	Secure	D↓ G↑	1.29	Winter
<u>Woodbeck</u>	Retford	Dynamic	D↓ G↑	1.64	Winter/Summer
<u>Woodhall Spa</u>	Lincolnshire	Dynamic	D↓ G↑	0.97	Winter
West Midlands					
<u>Brimscombe</u>	Stroud	Dynamic	D↓ G↑	5.10	Winter
<u>Hereford - Ledbury Ring</u>	Herefordshire	Secure	D↓ G↑	7.39	Winter
<u>Oldbury</u>	Birmingham	Dynamic	D↓ G↑	3.52	Winter

South Wales					
Abergavenny - Builth Wells	South Wales	Dynamic & Restore	D↓ G↑	4.47	Winter/Summer
Abergavenny - Brecon	South Wales	Dynamic & Restore	D↓ G↑	9.00	Winter/Summer
Abergavenny - Glasbury	South Wales	Dynamic & Restore	D↓ G↑	2.86	Winter/Summer
Llandrindod - Rhayader	South Wales	Dynamic & Restore	D↓ G↑	0.92	Winter/Summer
Pembroke - BroadField	South Wales	Dynamic & Restore	D↓ G↑	2.10	Winter/Summer
Pembroke - St Florence	South Wales	Dynamic & Restore	D↓ G↑	1.13	Winter/Summer
Pembroke - Tenby	South Wales	Dynamic & Restore	D↓ G↑	1.82	Winter/Summer
Trevaughan	South Wales	Secure & Restore	D↓ G↑	1.19	Winter
South West					
Bridgwater/Street	Somerset	Dynamic & Restore	D↓ G↑	9.63	Summer
Exeter City	Exeter	Dynamic & Restore	D↓ G↑	9.72	Winter
Hayle - Camborne	Cornwall	Secure & Restore	D↓ G↑	11.20	Winter
Isles of Scilly	Isles of Scilly	Secure & Restore	D↓ G↑	0.47	Winter
Moretonhampstead	Newton Abbot North	Dynamic & Restore	D↓ G↑	1.07	Winter
Newton Abbot	Devon	Dynamic & Restore	D↓ G↑	10.68	Winter
Padstow	Cornwall	Dynamic & Restore	D↓ G↑	2.29	Winter/Summer
Plymouth/South Hams	Devon	Dynamic & Restore	D↓ G↑	41.92	Summer

<u>Radstock</u>	Somerset	Dynamic & Restore	D↓ G↑	3.26	Winter/Summer
<u>Stokenham</u>	South Hams	Secure & Restore	D↓ G↑	0.78	Winter
<u>Taunton GSP</u>	Somerset	Dynamic & Restore	D↓ G↑	68.41	Winter
<u>Tiverton</u>	Devon	Dynamic & Restore	D↓ G↑	9.88	Winter/Summer
<u>Weston Super Mare</u>	Somerset	Secure & Restore	D↓ G↑	3.76	Winter
<u>Witheridge</u>	Devon	Secure & Restore	D↓ G↑	0.86	Winter

Section 5 - Detailed information on each CMZ's requirement

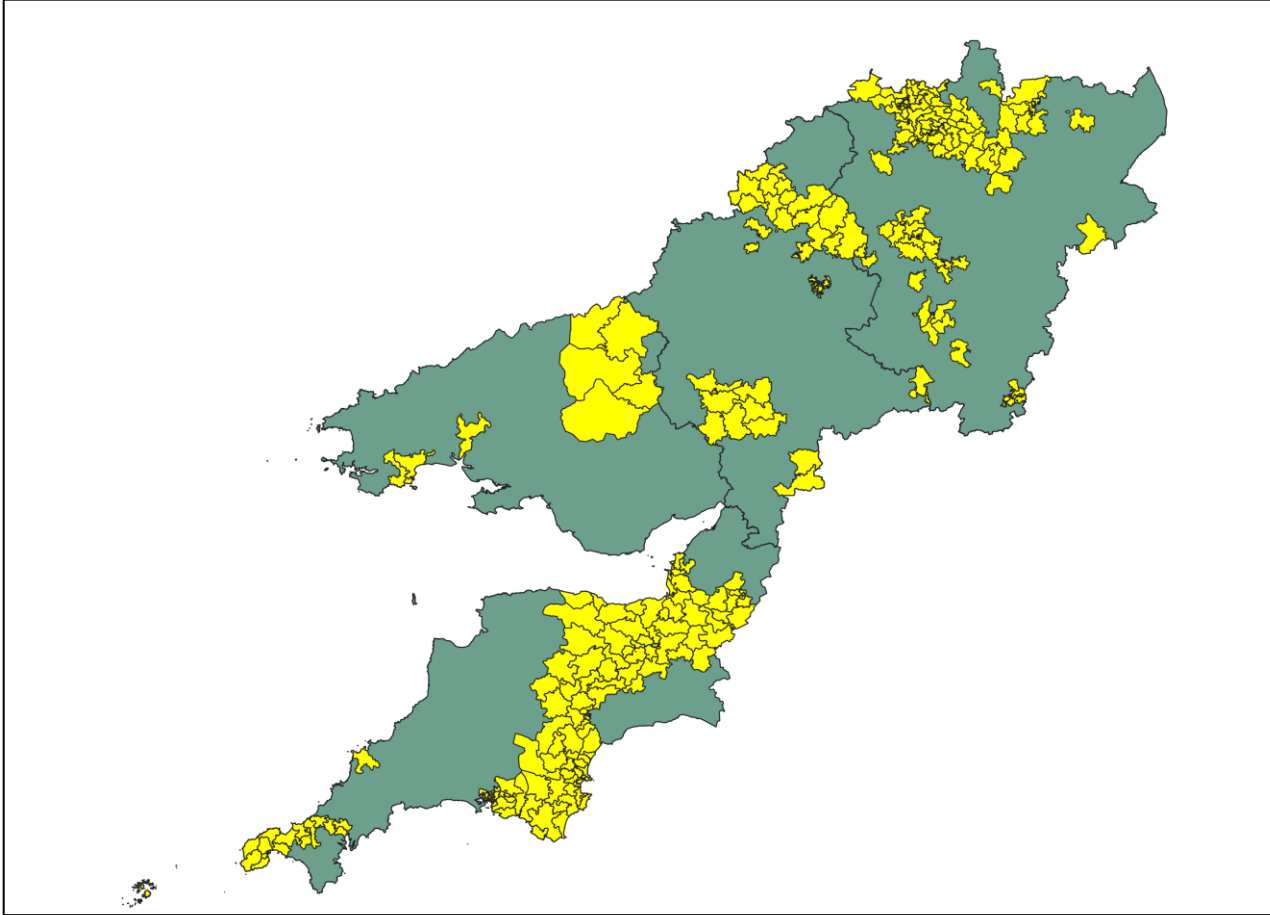
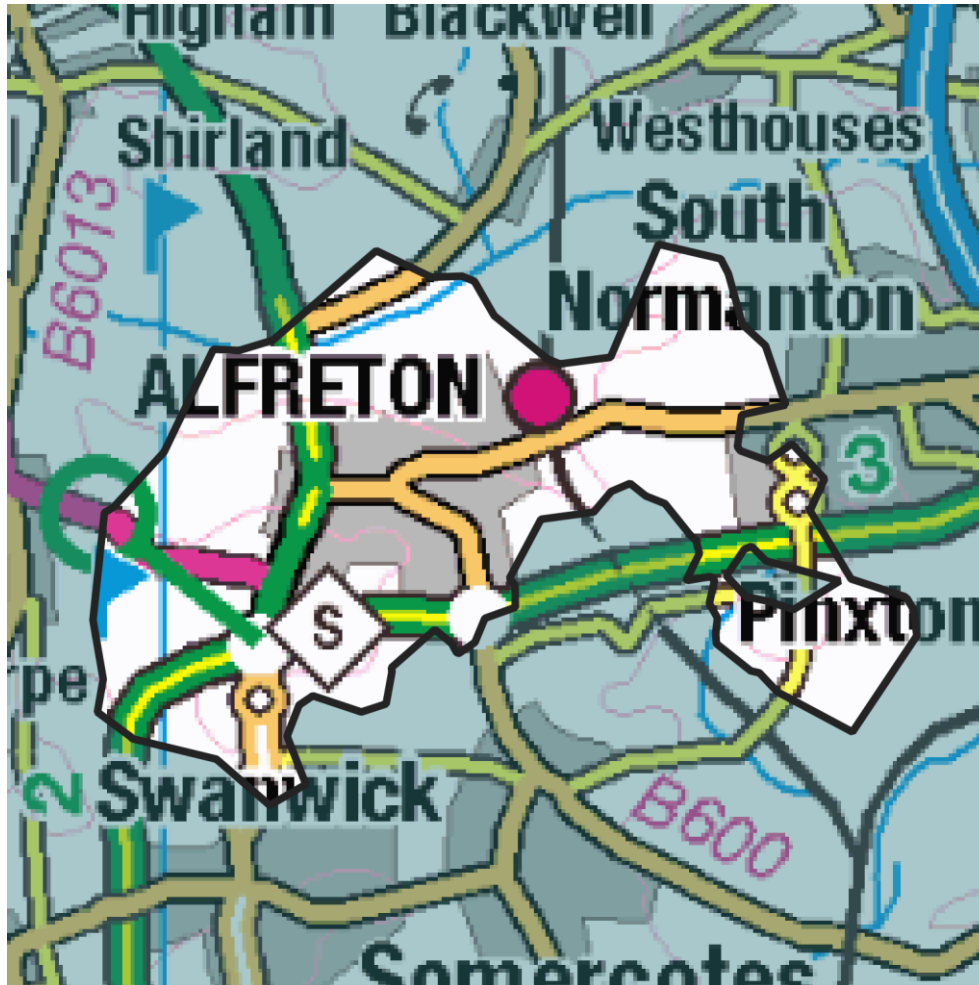


Image: map of WPD licence areas showing all CMZs included in the 2020 demand response procurement cycle 2.

The following pages provide detail on each of the CMZs WPD propose to include in the 2020 demand response procurement cycle 2.

Flexibility Analysis Report for CMZ_T4A_EM_0016 - Alfreton



Products	Season	MW Peak	Response
Secure & Restore	Summer	4.35	D↓ G↑

More information about this zone:

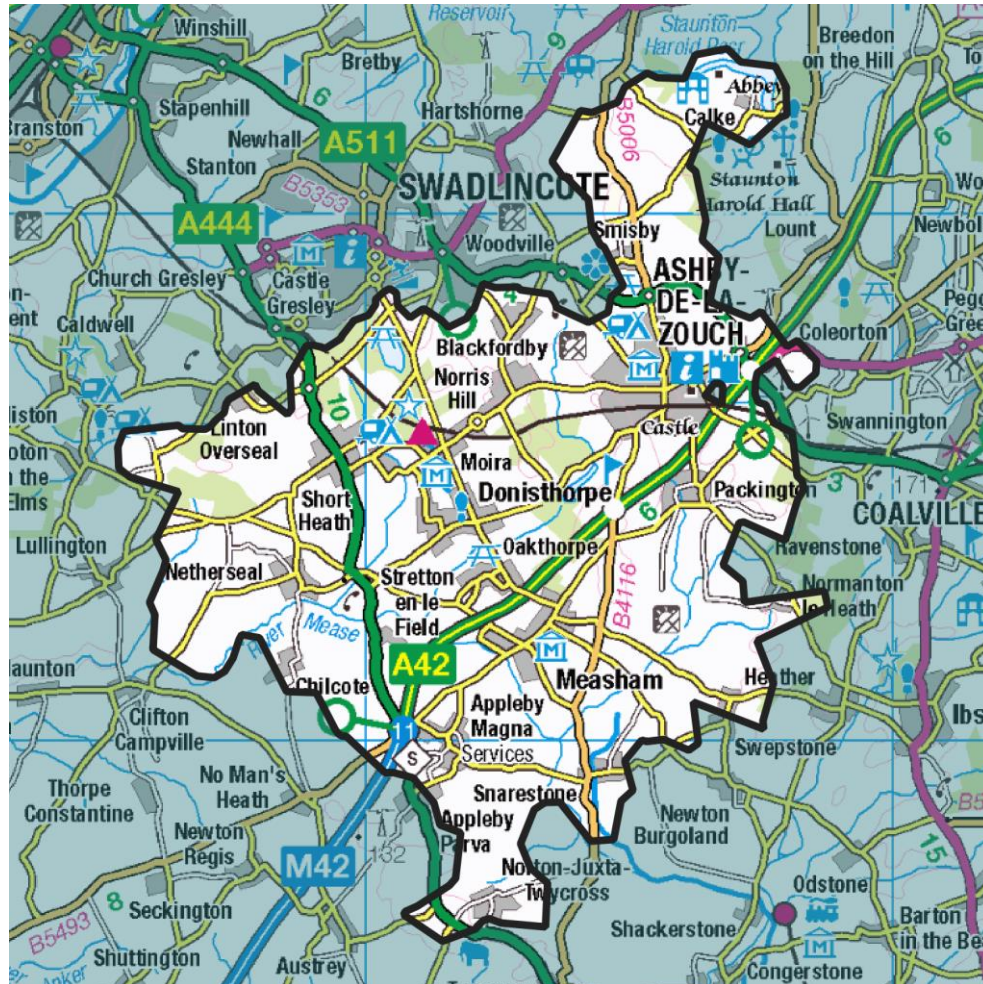
https://www.flexiblepower.co.uk/scheme/CMZ_T4A_EM_0016

is the dedicated scheme page for this zone on the Flexible Power website, here you can view;

- Availability windows
- Monthly profiles
- Service overview
- Valuation tool
- Postcode checker
- Register interest

[Back to CMZ list](#)

Flexibility Analysis Report for CMZ_T4A_EM_0014 - Ashby/Willesley



Products	Season	MW Peak	Response
Secure & Restore	Winter	2.16	D↓ G↑

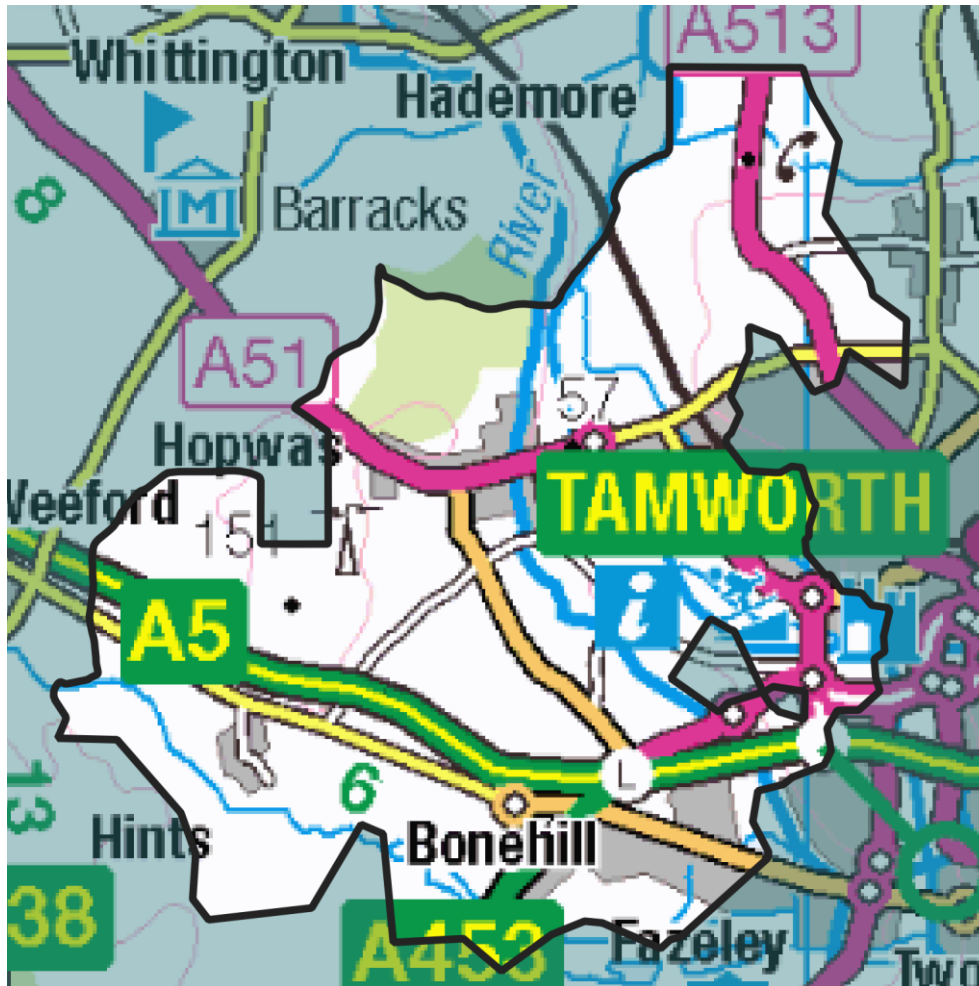
More information about this zone:

https://www.flexiblepower.co.uk/scheme/CMZ_T4A_EM_0014
 is the dedicated scheme page for this zone on the Flexible Power website, here you can view;

- Availability windows
- Monthly profiles
- Service overview
- Valuation tool
- Postcode checker
- Register interest

[Back to CMZ list](#)

Flexibility Analysis Report for CMZ_T4A_EM_0009 - Apollo – Tamworth



Products	Season	MW Peak	Response
Secure & Restore	Winter	1.4	D↓ G↑

More information about this zone:

https://www.flexiblepower.co.uk/scheme/CMZ_T4A_EM_0009

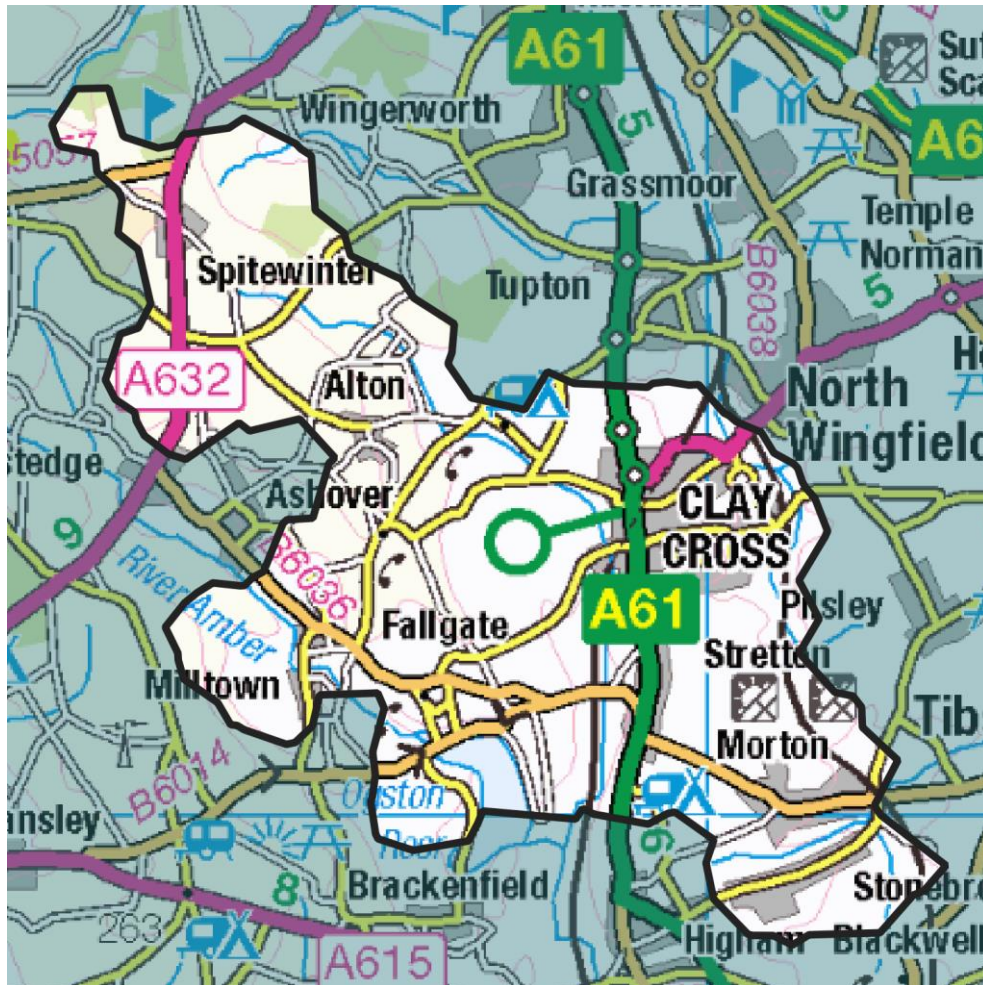
is the dedicated scheme page for this zone on the Flexible

Power website, here you can view;

- Availability windows
- Monthly profiles
- Service overview
- Valuation tool
- Postcode checker
- Register interest

[Back to CMZ list](#)

Flexibility Analysis Report for CMZ_T4A_EM_0010 - Chesterfield Main



Products	Season	MW Peak	Response
Dynamic & Restore	Winter	23.53	D↓ G↑

More information about this zone:

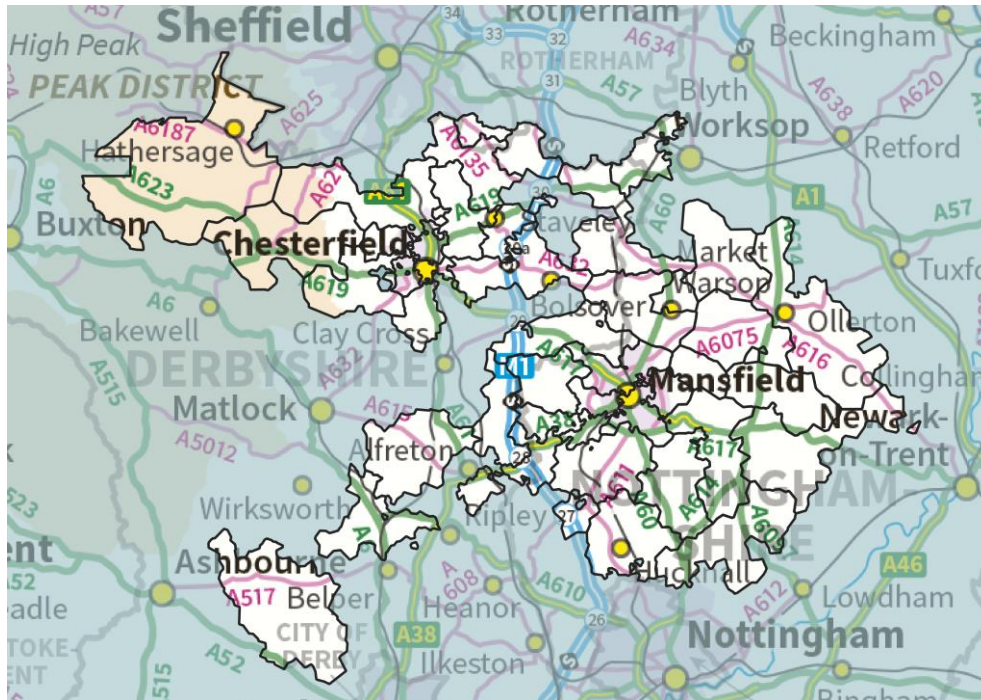
https://www.flexiblepower.co.uk/scheme/CMZ_T4A_EM_0010

is the dedicated scheme page for this zone on the Flexible Power website, here you can view;

- Availability windows
- Monthly profiles
- Service overview
- Valuation tool
- Postcode checker
- Register interest

[Back to CMZ list](#)

Flexibility Analysis Report for CMZ_T4B_EM_0004 - Chesterfield GSP



Products	Season	MW Peak	Response
Secure & Restore	Winter	1.4	D↓ G↑

More information about this zone:

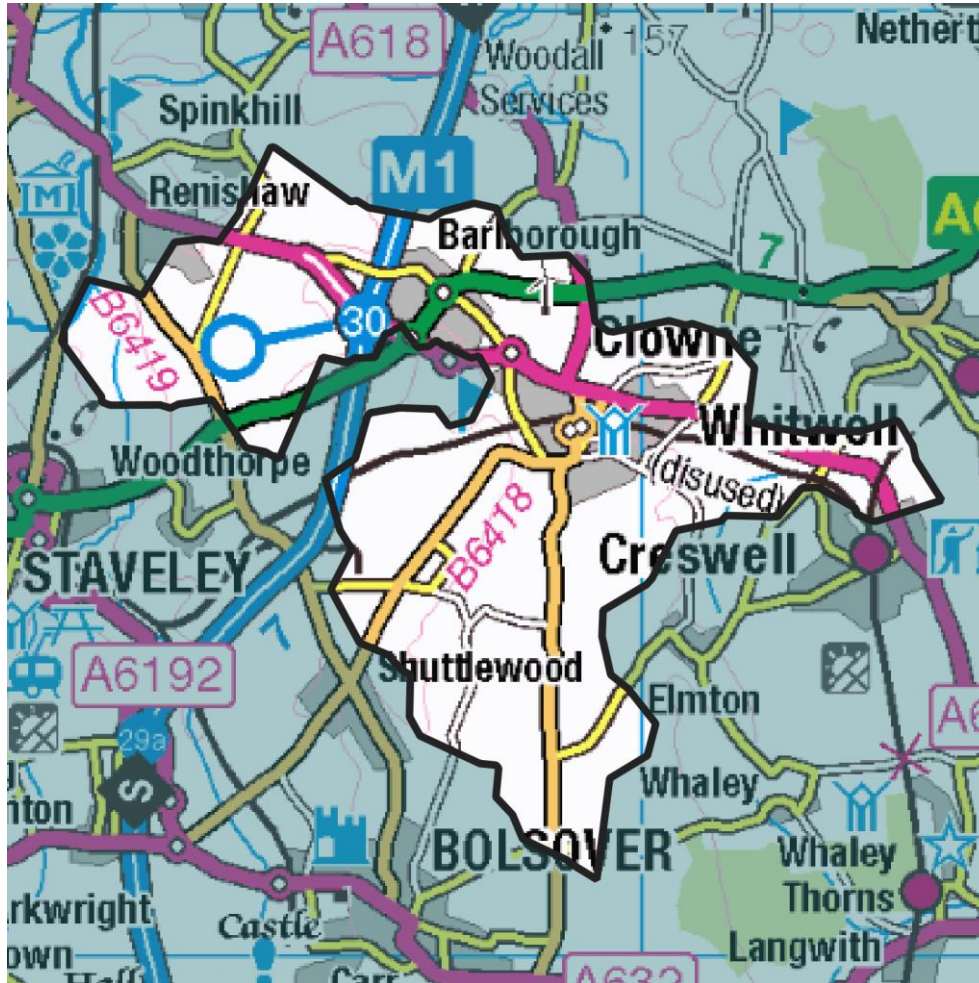
https://www.flexiblepower.co.uk/scheme/CMZ_T4B_EM_0004

is the dedicated scheme page for this zone on the Flexible Power website, here you can view;

- Availability windows
- Monthly profiles
- Service overview
- Valuation tool
- Postcode checker
- Register interest

[Back to CMZ list](#)

Flexibility Analysis Report for CMZ_T4A_EM_0011 – Clowne



Products	Season	MW Peak	Response
Dynamic & Restore	Winter	0.95	D↓ G↑

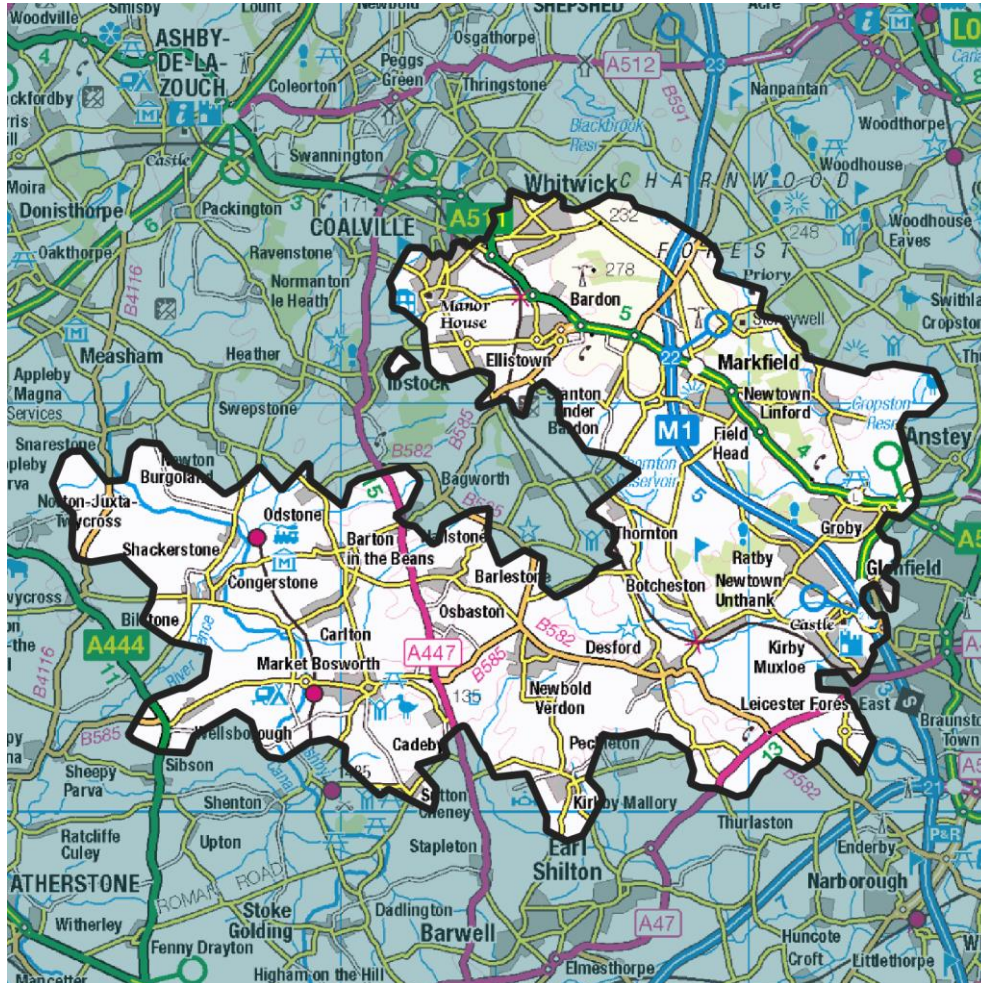
More information about this zone:

https://www.flexiblepower.co.uk/scheme/CMZ_T4A_EM_0011
is the dedicated scheme page for this zone on the Flexible Power website, here you can view;

- Availability windows
- Monthly profiles
- Service overview
- Valuation tool
- Postcode checker
- Register interest

[Back to CMZ list](#)

Flexibility Analysis Report for CMZ_T4A_EM_0012 – Coalville



Products	Season	MW Peak	Response
Dynamic & Restore	Winter/Summer	26.71	D↓ G↑

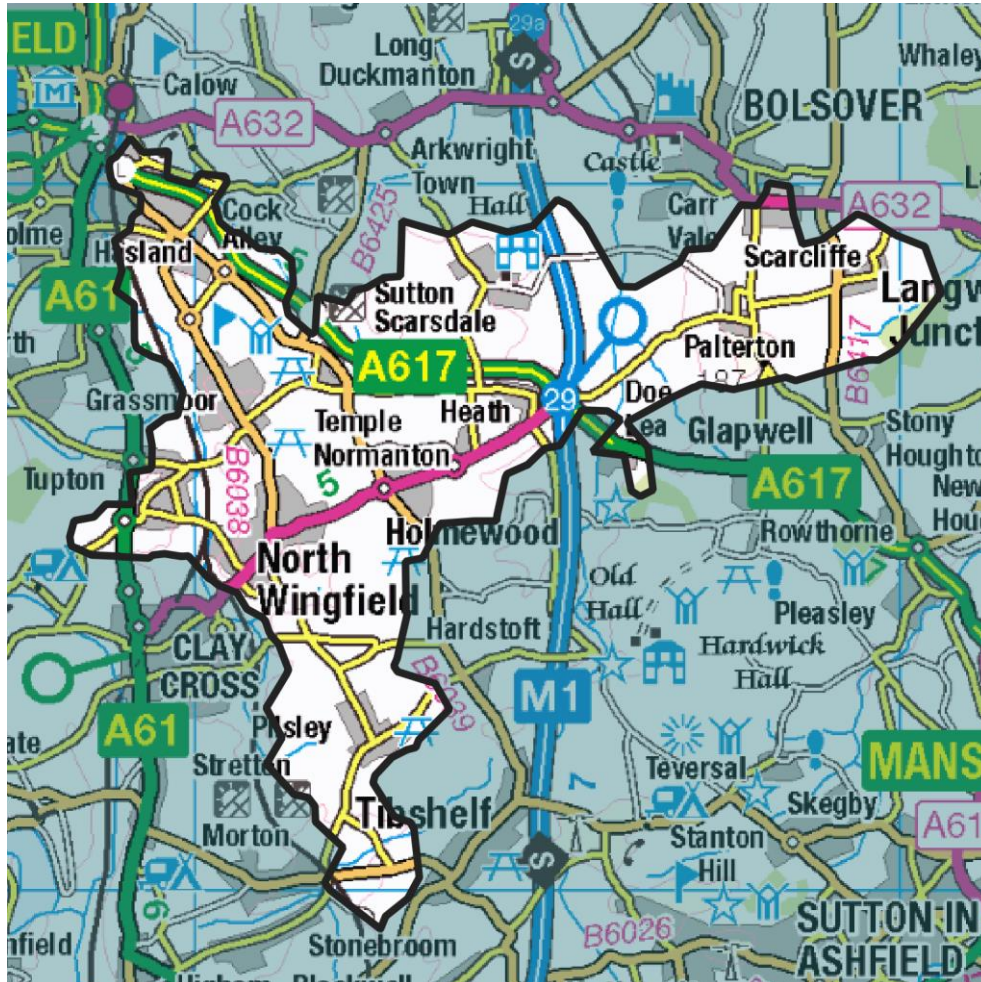
More information about this zone:

https://www.flexiblepower.co.uk/scheme/CMZ_T4A_EM_0012 is the dedicated scheme page for this zone on the Flexible Power website, here you can view;

- Availability windows
- Monthly profiles
- Service overview
- Valuation tool
- Postcode checker
- Register interest

[Back to CMZ list](#)

Flexibility Analysis Report for CMZ_T4A_EM_0013 – Grassmoor



Products	Season	MW Peak	Response
Secure & Restore	Winter/Summer	2.27	D↓ G↑

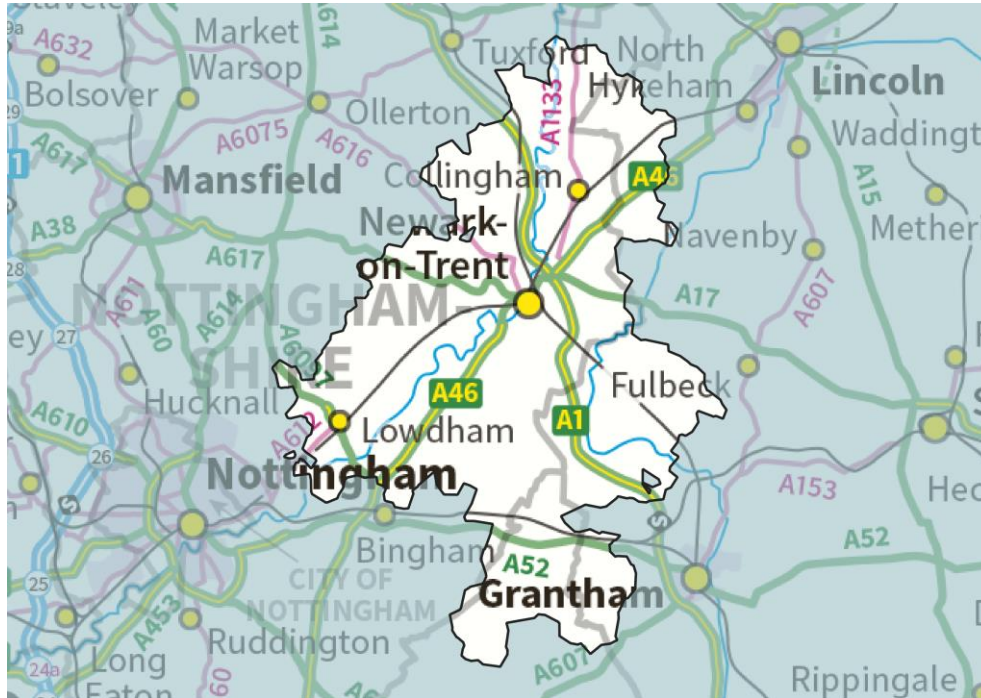
More information about this zone:

https://www.flexiblepower.co.uk/scheme/CMZ_T4A_EM_0013
 is the dedicated scheme page for this zone on the Flexible Power website, here you can view;

- Availability windows
- Monthly profiles
- Service overview
- Valuation tool
- Postcode checker
- Register interest

[Back to CMZ list](#)

Flexibility Analysis Report for CMZ_T4B_EM_0001 – Hawton



Products	Season	MW Peak	Response
Dynamic & Restore	Summer	5.06	D↑ G↓

More information about this zone:

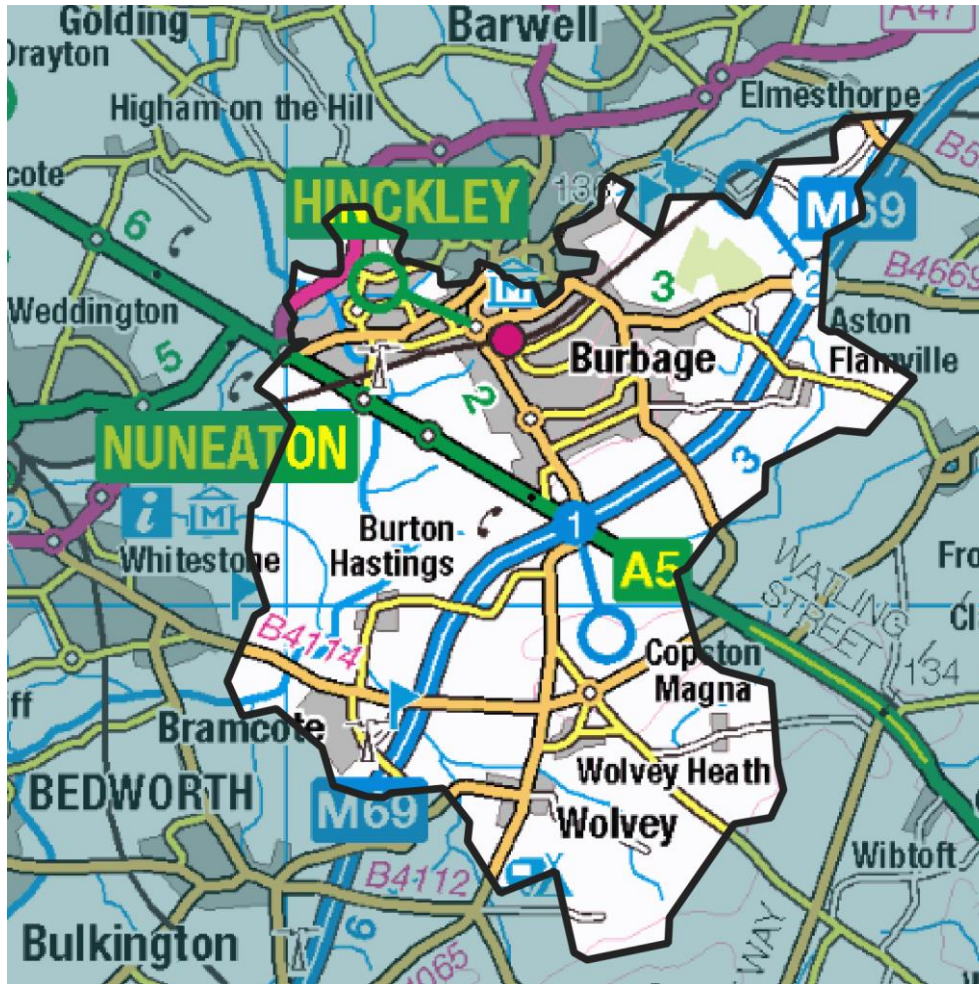
https://www.flexiblepower.co.uk/scheme/CMZ_T4B_EM_0001

is the dedicated scheme page for this zone on the Flexible Power website, here you can view;

- Availability windows
- Monthly profiles
- Service overview
- Valuation tool
- Postcode checker
- Register interest

[Back to CMZ list](#)

Flexibility Analysis Report for CMZ_T4A_EM_0015 – Hinckley



Products	Season	MW Peak	Response
Dynamic & Restore	Winter/Summer	5.65	D↓ G↑

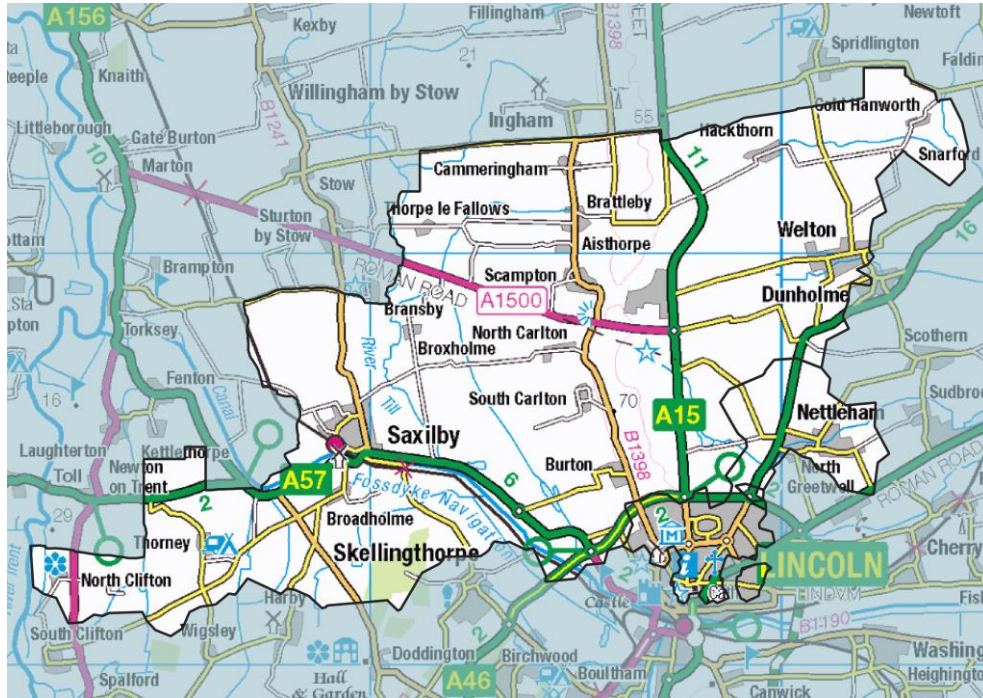
More information about this zone:

https://www.flexiblepower.co.uk/scheme/CMZ_T4A_EM_0015
is the dedicated scheme page for this zone on the Flexible Power website, here you can view;

- Availability windows
- Monthly profiles
- Service overview
- Valuation tool
- Postcode checker
- Register interest

[Back to CMZ list](#)

Flexibility Analysis Report for CMZ_T4B_EM_0002 - Lincoln - Anderson Lane



Products	Season	MW Peak	Response
Secure & Restore	Winter	5.35	D↓ G↑

More information about this zone:

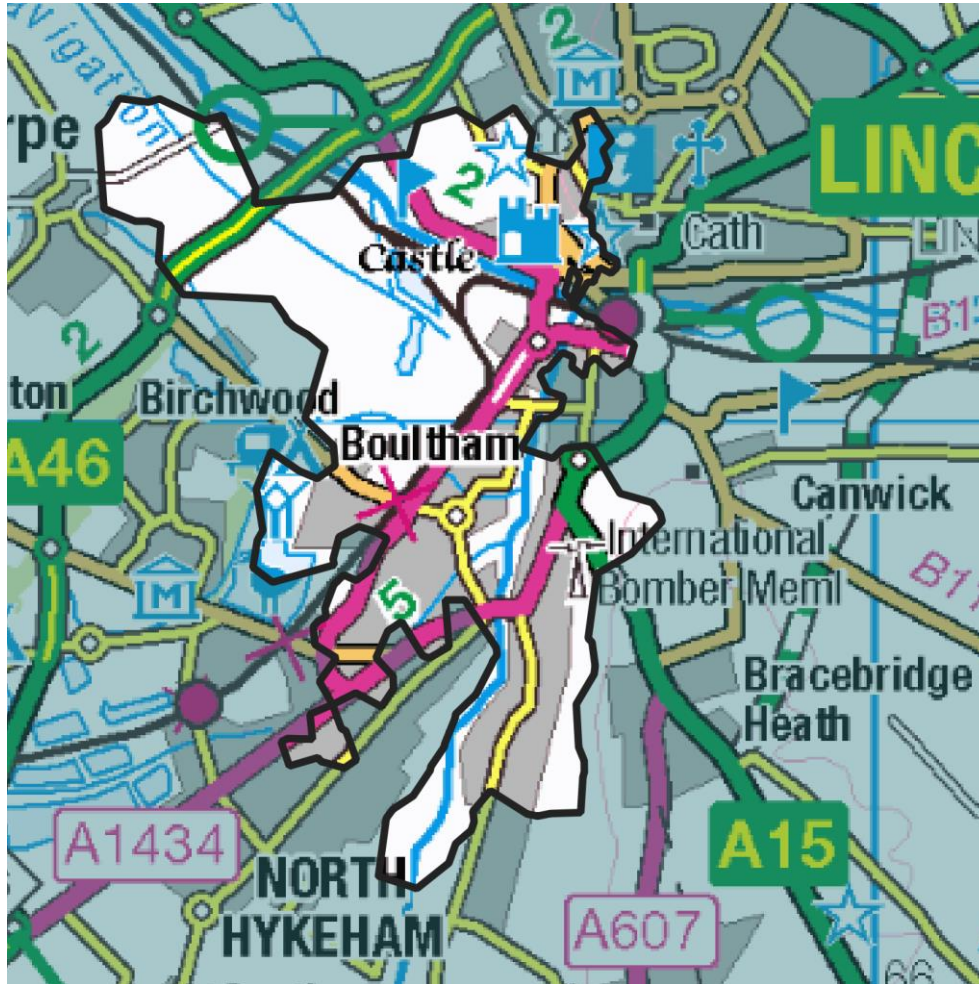
https://www.flexiblepower.co.uk/scheme/CMZ_T4B_EM_0002

is the dedicated scheme page for this zone on the Flexible Power website, here you can view;

- Availability windows
- Monthly profiles
- Service overview
- Valuation tool
- Postcode checker
- Register interest

[Back to CMZ list](#)

Flexibility Analysis Report for CMZ_T3A_EM_0005 - Lincoln - Beevor Street



Products	Season	MW Peak	Response
Dynamic & Restore	Winter/Summer	3.03	D↓ G↑

More information about this zone:

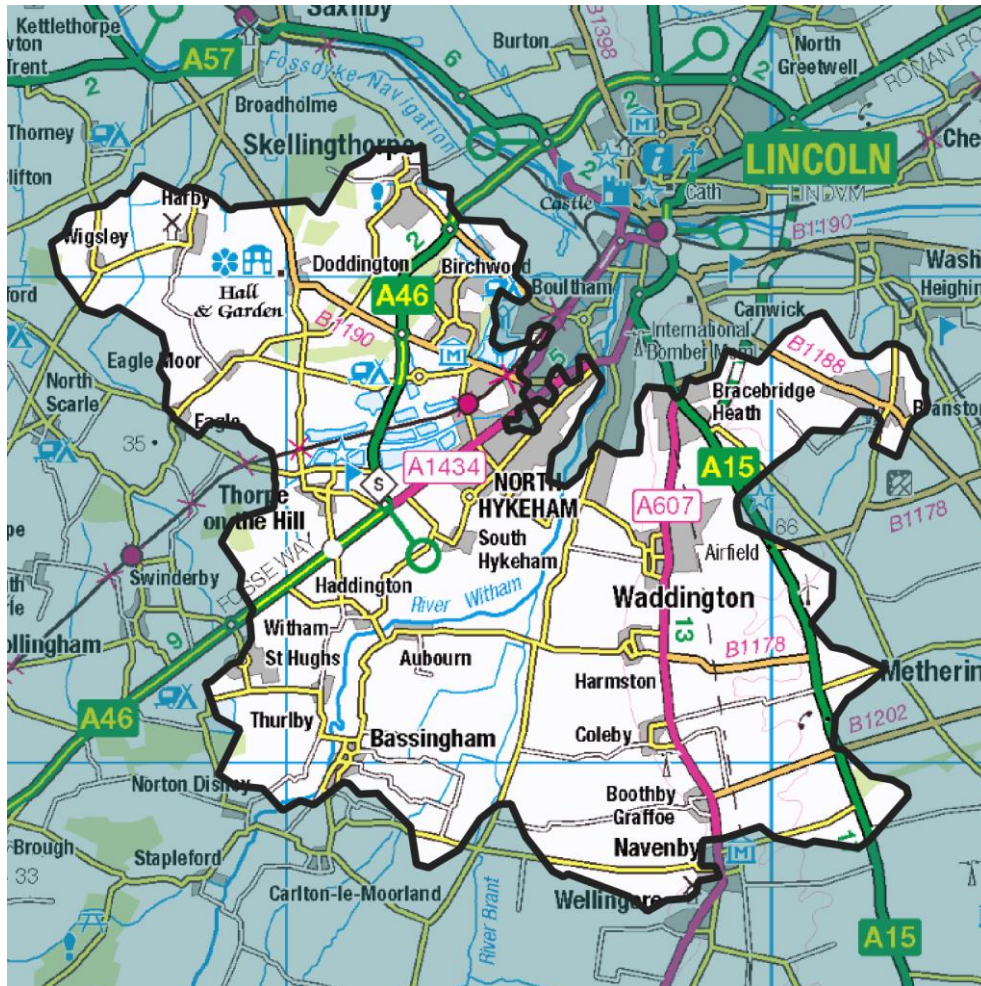
https://www.flexiblepower.co.uk/scheme/CMZ_T3A_EM_0005

is the dedicated scheme page for this zone on the Flexible Power website, here you can view;

- Availability windows
- Monthly profiles
- Service overview
- Valuation tool
- Postcode checker
- Register interest

[Back to CMZ list](#)

Flexibility Analysis Report for CMZ_T3A_EM_0004 - Lincoln - North Hykeham



Products	Season	MW Peak	Response
Dynamic & Restore	Winter	7.92	D↓ G↑

More information about this zone:

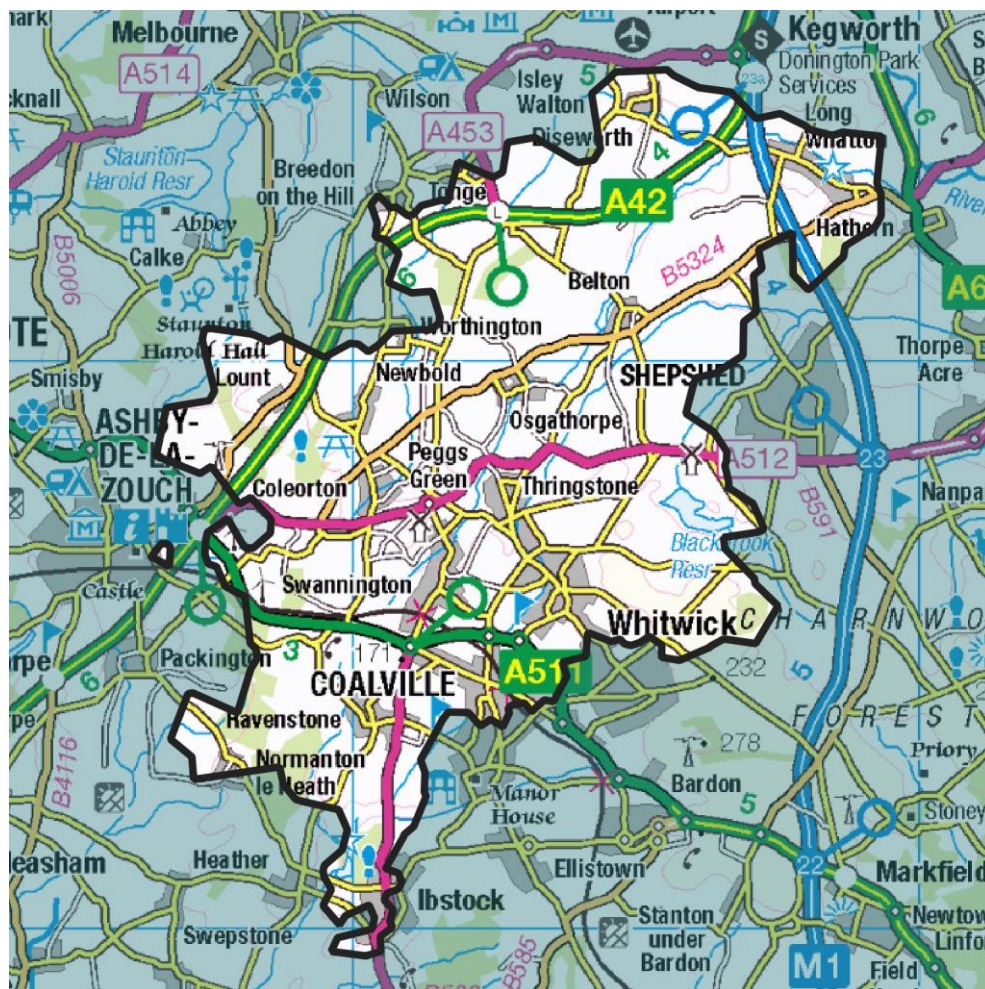
https://www.flexiblepower.co.uk/scheme/CMZ_T3A_EM_0004

is the dedicated scheme page for this zone on the Flexible Power website, here you can view;

- Availability windows
- Monthly profiles
- Service overview
- Valuation tool
- Postcode checker
- Register interest

[Back to CMZ list](#)

Flexibility Analysis Report for CMZ_T3A_EM_0006 - Mantle Lane



Products	Season	MW Peak	Response
Dynamic & Restore	Winter/Summer	5.58	D↓ G↑

More information about this zone:

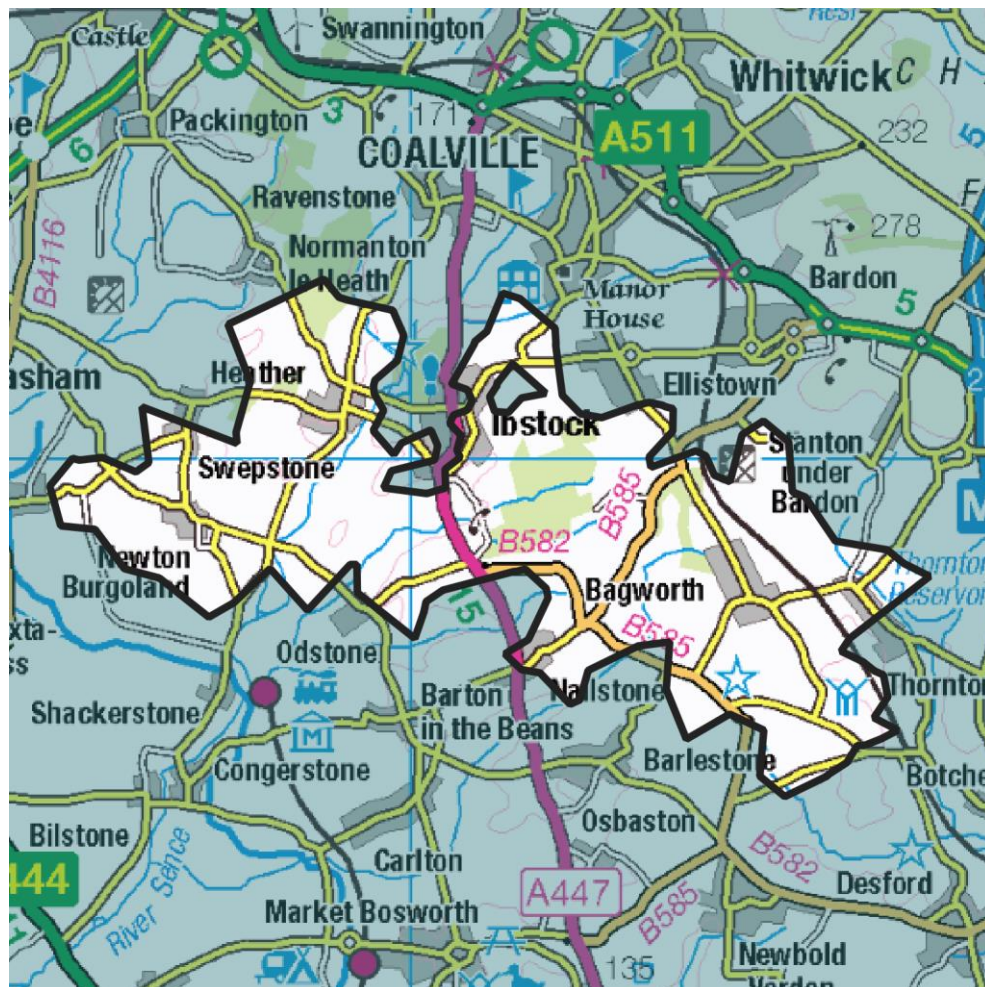
https://www.flexiblepower.co.uk/scheme/CMZ_T3A_EM_0006

is the dedicated scheme page for this zone on the Flexible Power website, here you can view;

- Availability windows
- Monthly profiles
- Service overview
- Valuation tool
- Postcode checker
- Register interest

[Back to CMZ list](#)

Flexibility Analysis Report for CMZ_T4A_EM_0017 – Nailstone



Products	Season	MW Peak	Response
Dynamic & Restore	Winter/Summer	4.44	D↓ G↑

More information about this zone:

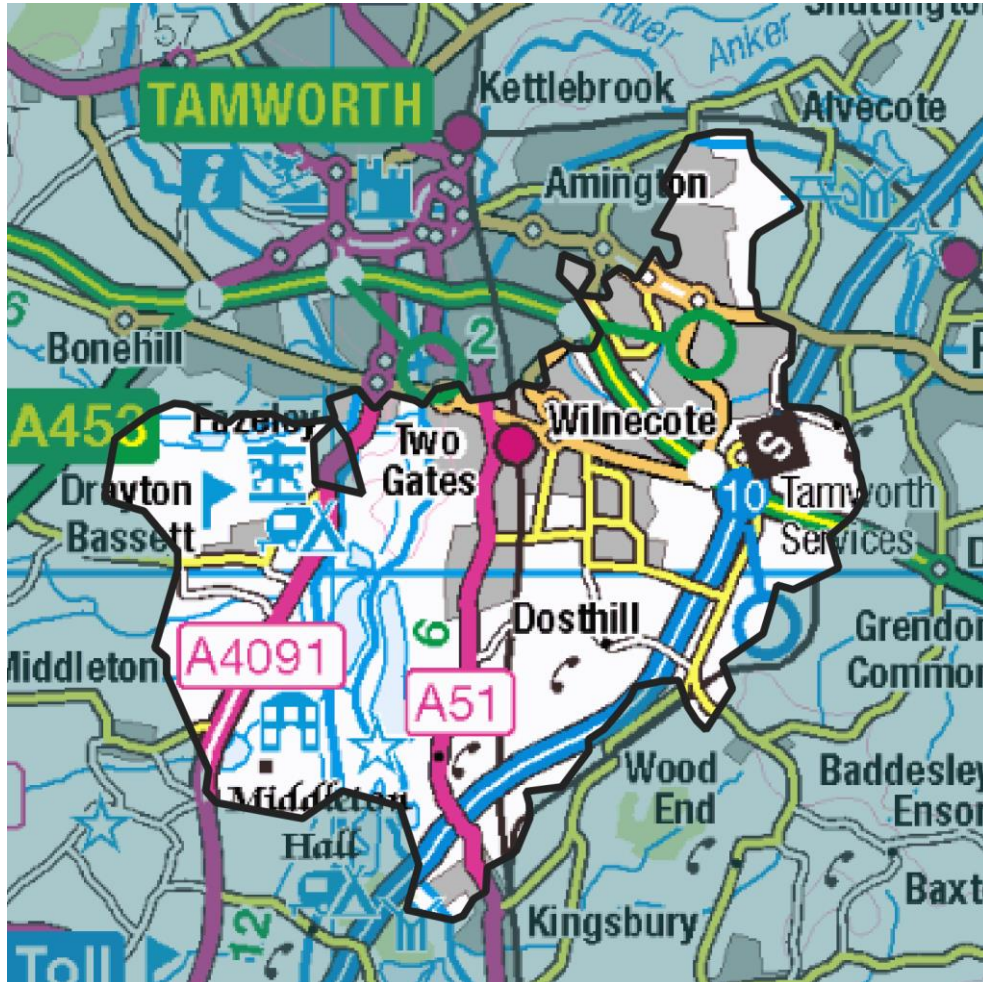
https://www.flexiblepower.co.uk/scheme/CMZ_T4A_EM_0017

is the dedicated scheme page for this zone on the Flexible Power website, here you can view;

- Availability windows
- Monthly profiles
- Service overview
- Valuation tool
- Postcode checker
- Register interest

[Back to CMZ list](#)

Flexibility Analysis Report for CMZ_T4A_EM_0018 - Tamworth Main



Products	Season	MW Peak	Response
Secure & Restore	Winter	2.04	D↓ G↑

More information about this zone:

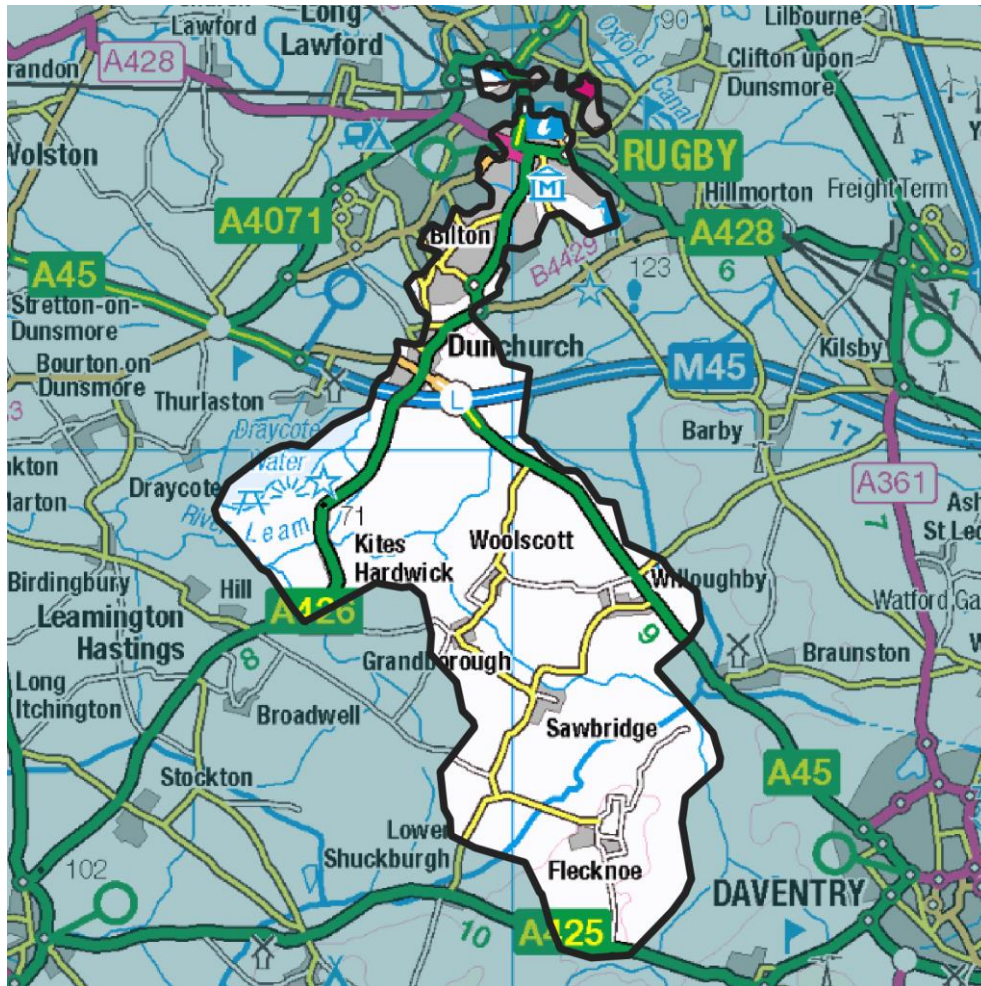
https://www.flexiblepower.co.uk/scheme/CMZ_T4A_EM_0018

is the dedicated scheme page for this zone on the Flexible Power website, here you can view;

- Availability windows
- Monthly profiles
- Service overview
- Valuation tool
- Postcode checker
- Register interest

[Back to CMZ list](#)

Flexibility Analysis Report for CMZ_T4A_EM_0019 - Union Street – Rugby



Products	Season	MW Peak	Response
Secure & Restore	Winter	0.83	D↓ G↑

More information about this zone:

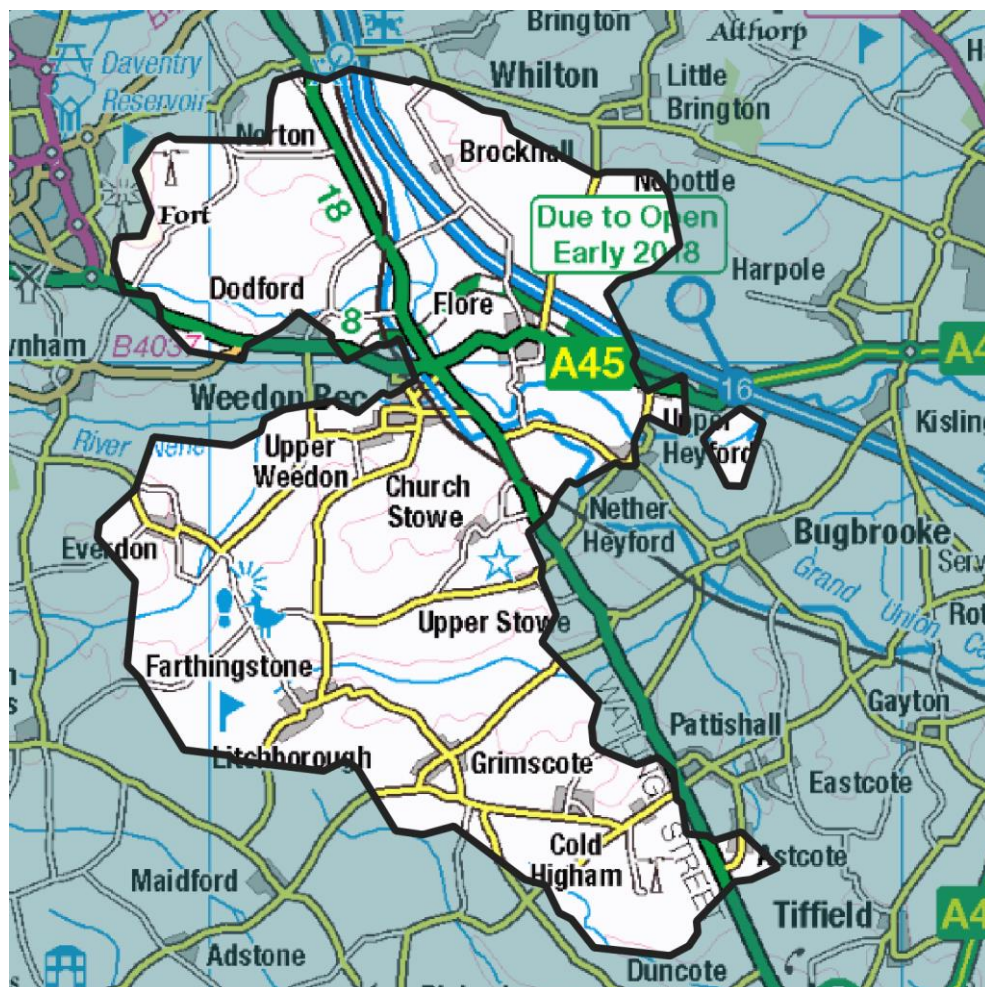
https://www.flexiblepower.co.uk/scheme/CMZ_T4A_EM_0019

is the dedicated scheme page for this zone on the Flexible Power website, here you can view;

- Availability windows
- Monthly profiles
- Service overview
- Valuation tool
- Postcode checker
- Register interest

[Back to CMZ list](#)

Flexibility Analysis Report for CMZ_T4A_EM_0021 – Weedon



Products	Season	MW Peak	Response
Secure & Restore	Winter	1.29	D↓ G↑

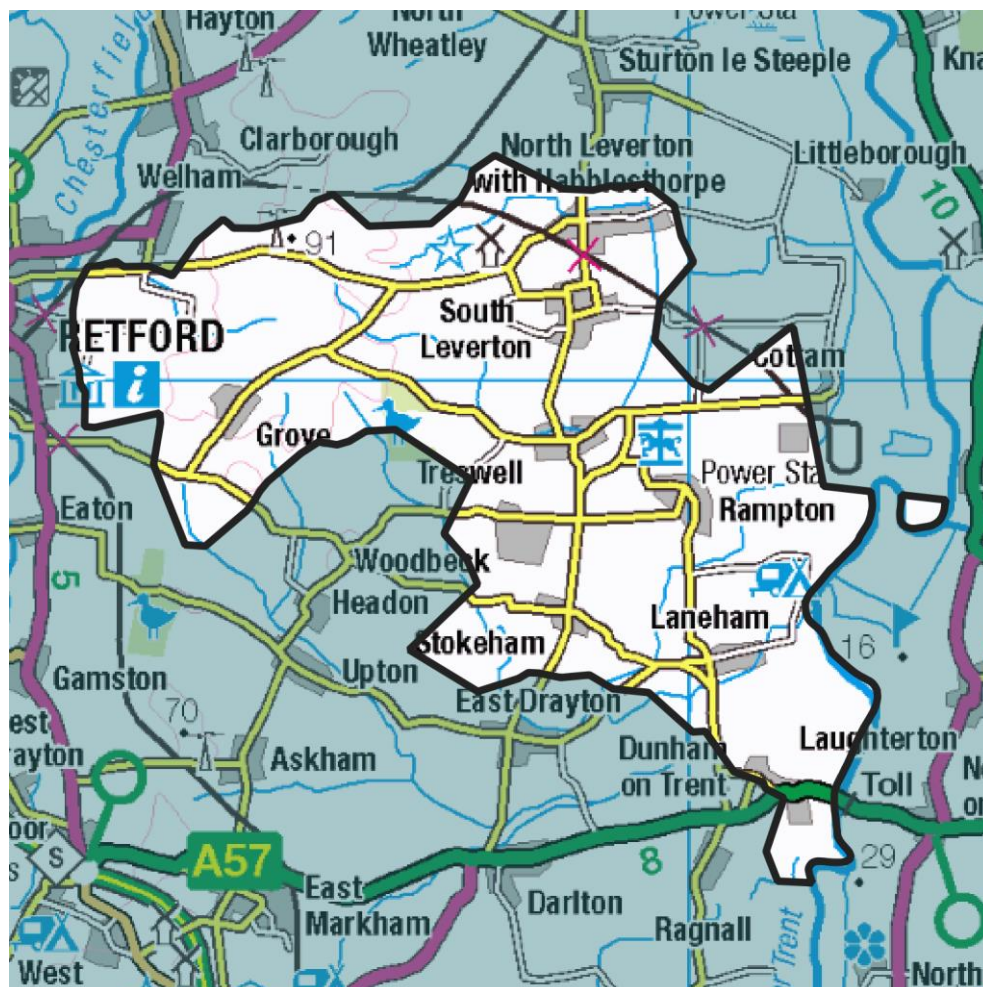
More information about this zone:

https://www.flexiblepower.co.uk/scheme/CMZ_T4A_EM_0021
 is the dedicated scheme page for this zone on the Flexible Power website, here you can view;

- Availability windows
- Monthly profiles
- Service overview
- Valuation tool
- Postcode checker
- Register interest

[Back to CMZ list](#)

Flexibility Analysis Report for CMZ_T4A_EM_0020 – Woodbeck



Products	Season	MW Peak	Response
Dynamic & Restore	Winter/Summer	1.64	D↓ G↑

More information about this zone:

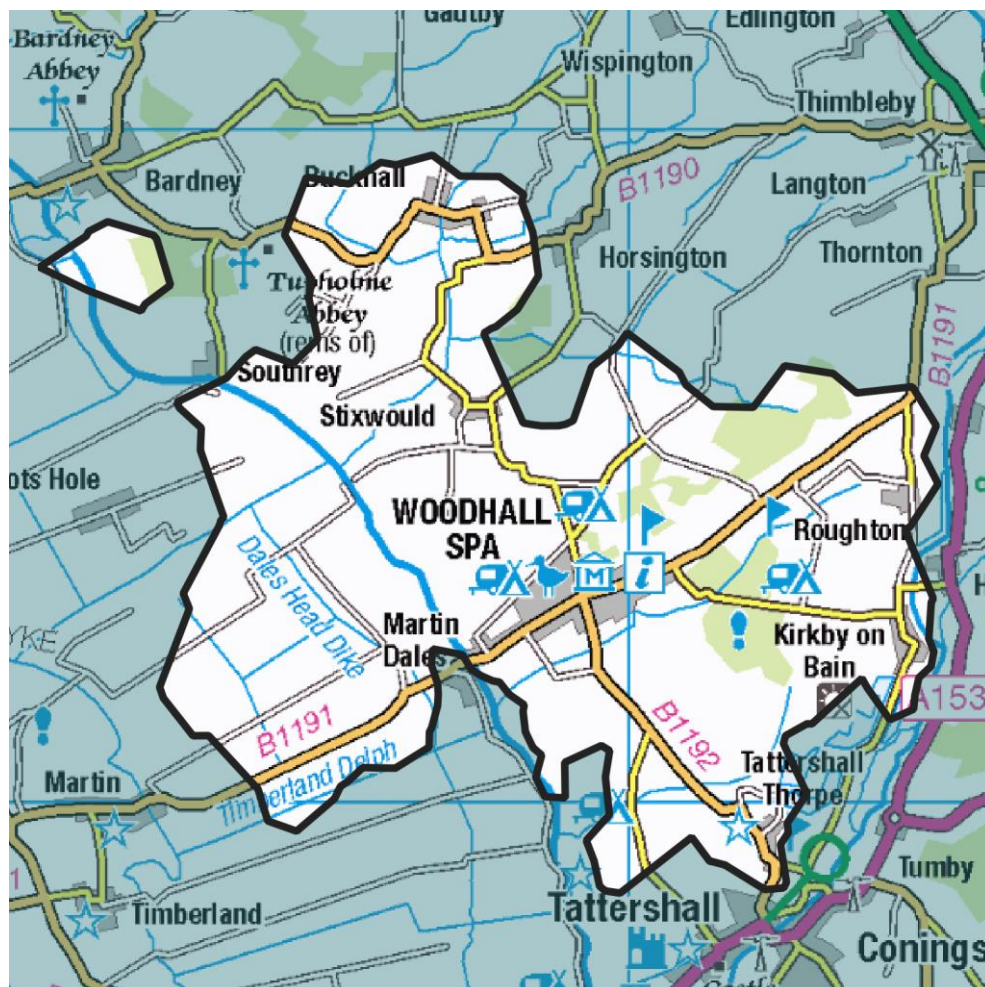
https://www.flexiblepower.co.uk/scheme/CMZ_T4A_EM_0020

is the dedicated scheme page for this zone on the Flexible Power website, here you can view;

- Availability windows
- Monthly profiles
- Service overview
- Valuation tool
- Postcode checker
- Register interest

[Back to CMZ list](#)

Flexibility Analysis Report for CMZ_T3A_EM_0003 - Woodhall Spa



Products	Season	MW Peak	Response
Dynamic & Restore	Winter	0.97	D↓ G↑

More information about this zone:

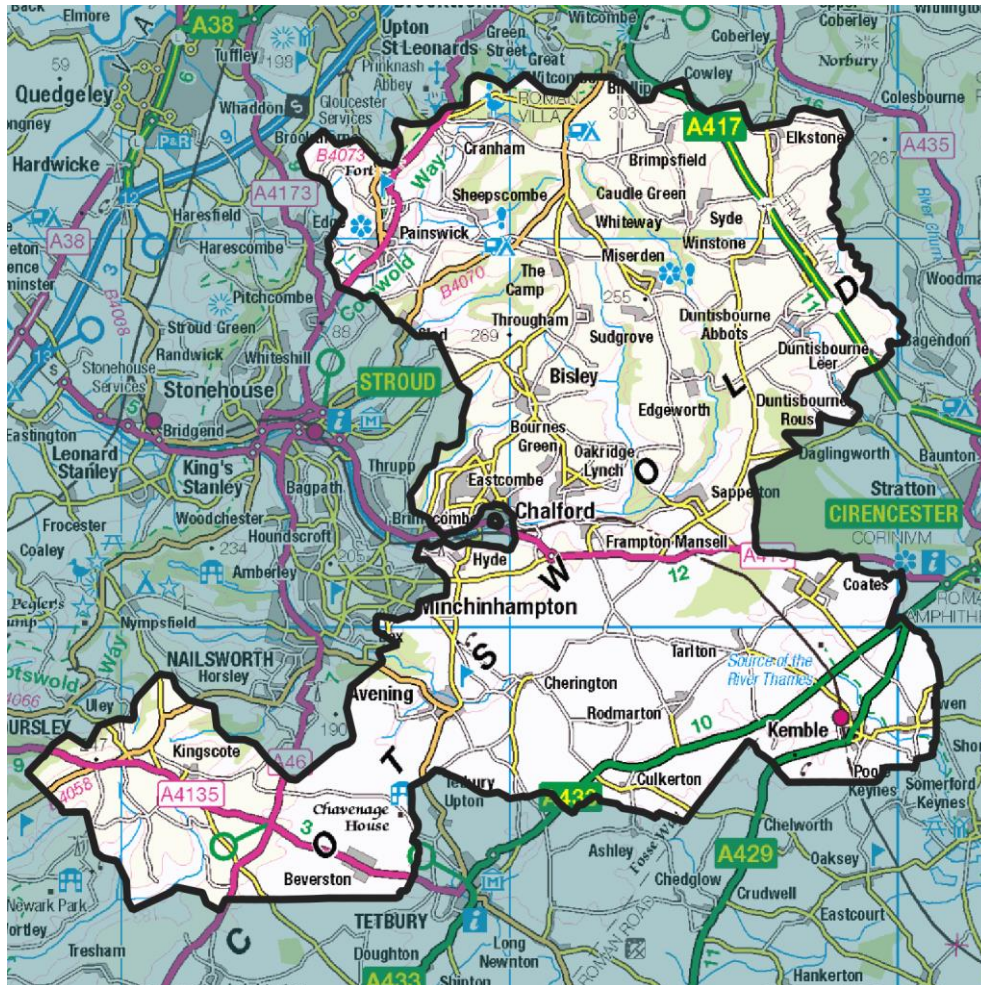
https://www.flexiblepower.co.uk/scheme/CMZ_T3A_EM_0003

is the dedicated scheme page for this zone on the Flexible Power website, here you can view;

- Availability windows
- Monthly profiles
- Service overview
- Valuation tool
- Postcode checker
- Register interest

[Back to CMZ list](#)

Flexibility Analysis Report for CMZ_T4A_WM_0006 – Brimscombe



Products	Season	MW Peak	Response
Dynamic & Restore	Winter	5.10	D↓ G↑

More information about this zone:

https://www.flexiblepower.co.uk/scheme/CMZ_T4A_WM_0006

is the dedicated scheme page for this zone on the Flexible Power website, here you can view;

- Availability windows
- Monthly profiles
- Service overview
- Valuation tool
- Postcode checker
- Register interest

[Back to CMZ list](#)

[illegible]

More information about this zone:

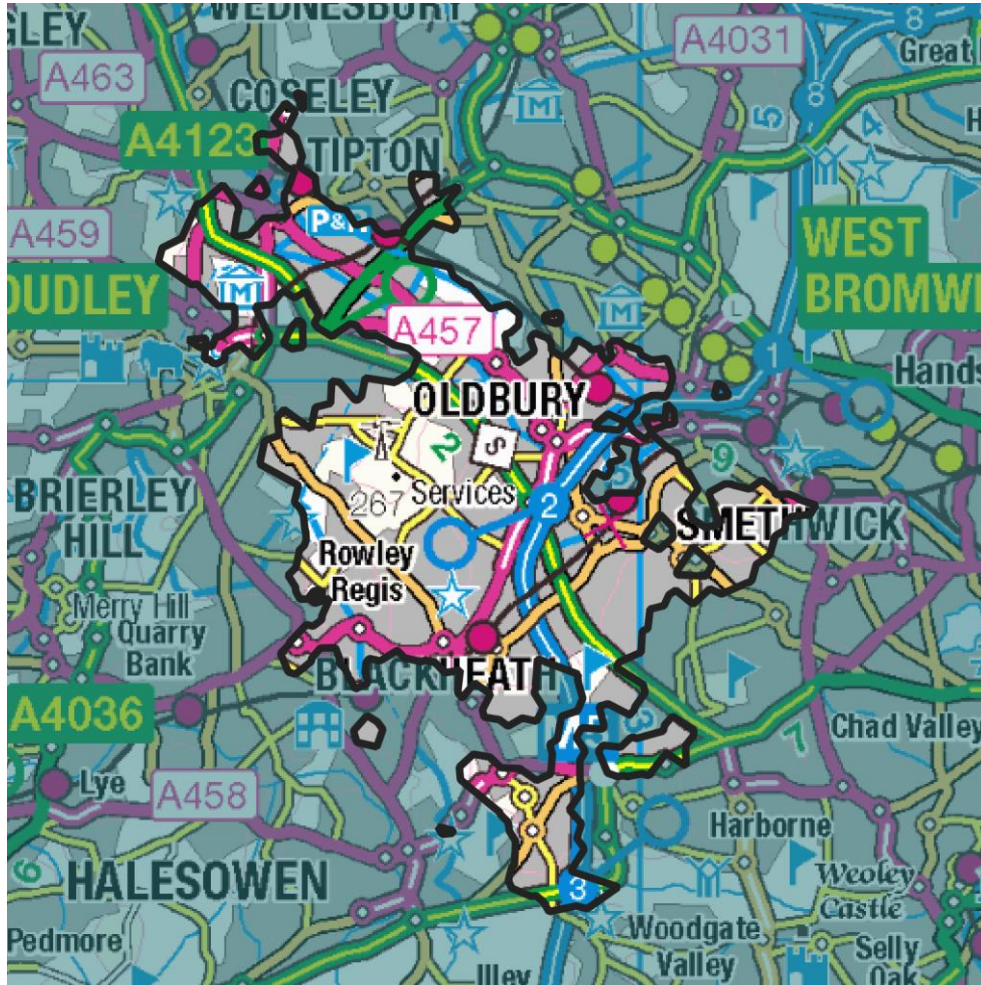
https://www.flexiblepower.co.uk/scheme/CMZ_T4B_WM_0001

is the dedicated scheme page for this zone on the Flexible Power website, here you can view;

- Availability windows
- Monthly profiles
- Service overview
- Valuation tool
- Postcode checker
- Register interest

[Back to CMZ list](#)

Flexibility Analysis Report for CMZ_T4A_WM_0005 – Oldbury



Products	Season	MW Peak	Response
Dynamic & Restore	Winter	3.52	D↓ G↑

More information about this zone:

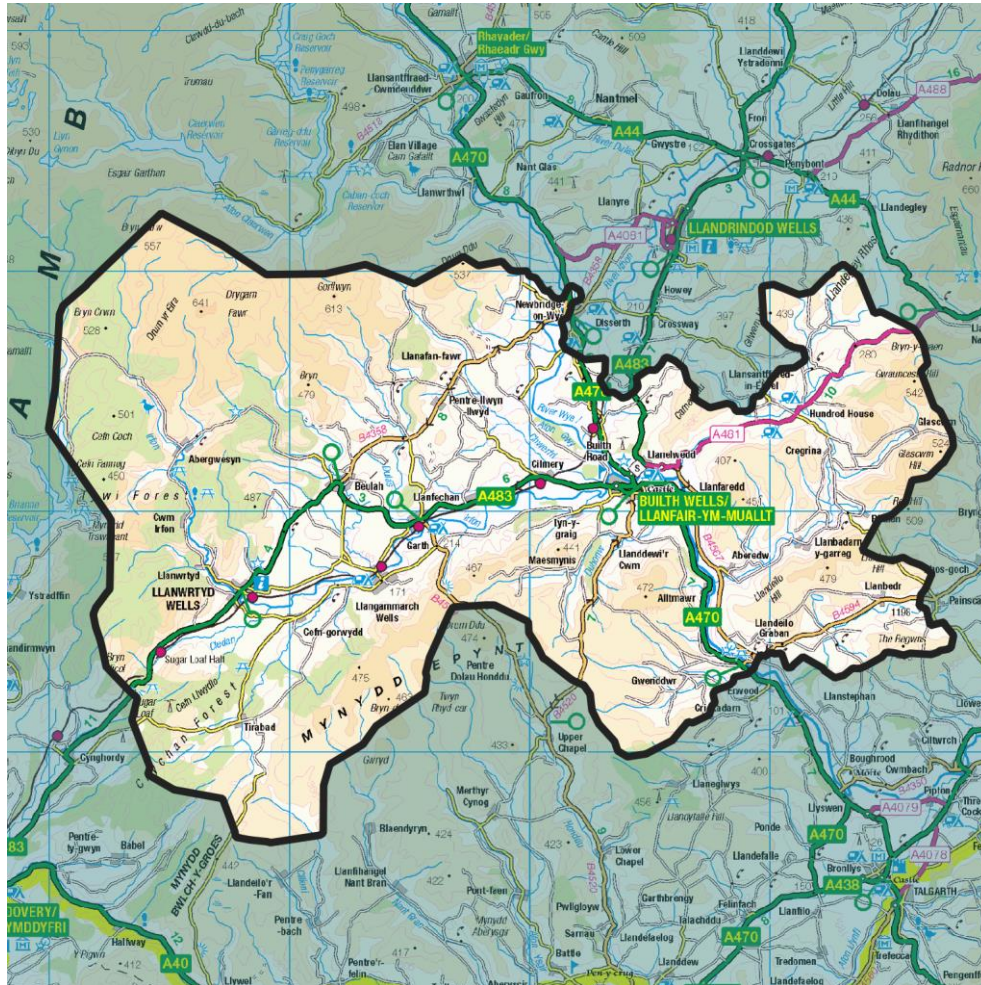
https://www.flexiblepower.co.uk/scheme/CMZ_T4A_WM_0005

is the dedicated scheme page for this zone on the Flexible Power website, here you can view;

- Availability windows
- Monthly profiles
- Service overview
- Valuation tool
- Postcode checker
- Register interest

[Back to CMZ list](#)

Flexibility Analysis Report for CMZ_T4A_SWA_0002_P2 - Abergavenny - Builth Wells



Products	Season	MW Peak	Response
Dynamic & Restore	Winter/Summer	4.47	D↓ G↑

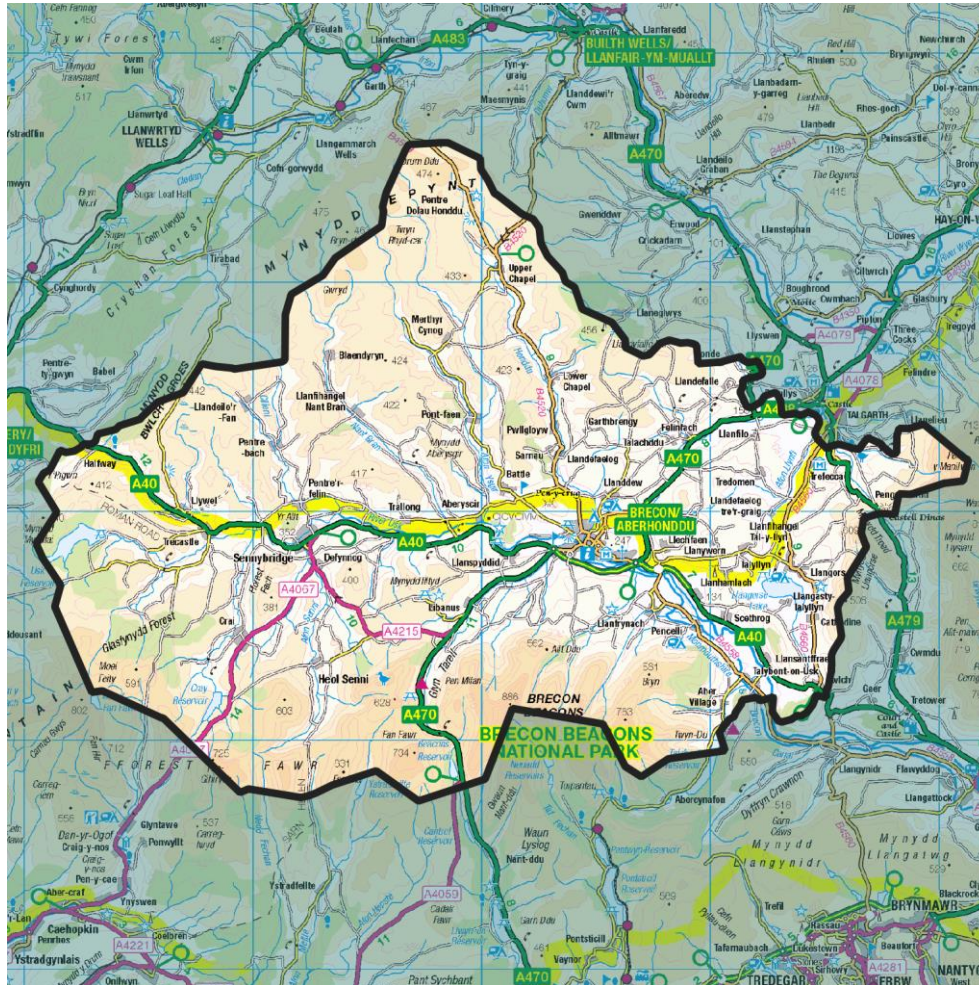
More information about this zone:

https://www.flexiblepower.co.uk/scheme/CMZ_T4A_SWA_0002_P2 is the dedicated scheme page for this zone on the Flexible Power website, here you can view;

- Availability windows
- Monthly profiles
- Service overview
- Valuation tool
- Postcode checker
- Register interest

[Back to CMZ list](#)

Flexibility Analysis Report for CMZ_T4A_SWA_0002_P1 - Abergavenny – Brecon



Products	Season	MW Peak	Response
Dynamic & Restore	Winter/Summer	9.00	D↓ G↑

More information about this zone:

https://www.flexiblepower.co.uk/scheme/CMZ_T4A_SWA_0002_P1

is the dedicated scheme page for this zone on the Flexible Power website, here you can view;

- Availability windows
- Monthly profiles
- Service overview
- Valuation tool
- Postcode checker
- Register interest

[Back to CMZ list](#)

More information about this zone:

https://www.flexiblepower.co.uk/scheme/CMZ_T4A_SWA_0002_P3

is the dedicated scheme page for this zone on the Flexible Power website, here you can view;

- Availability windows
- Monthly profiles
- Service overview
- Valuation tool
- Postcode checker
- Register interest

[Back to CMZ list](#)

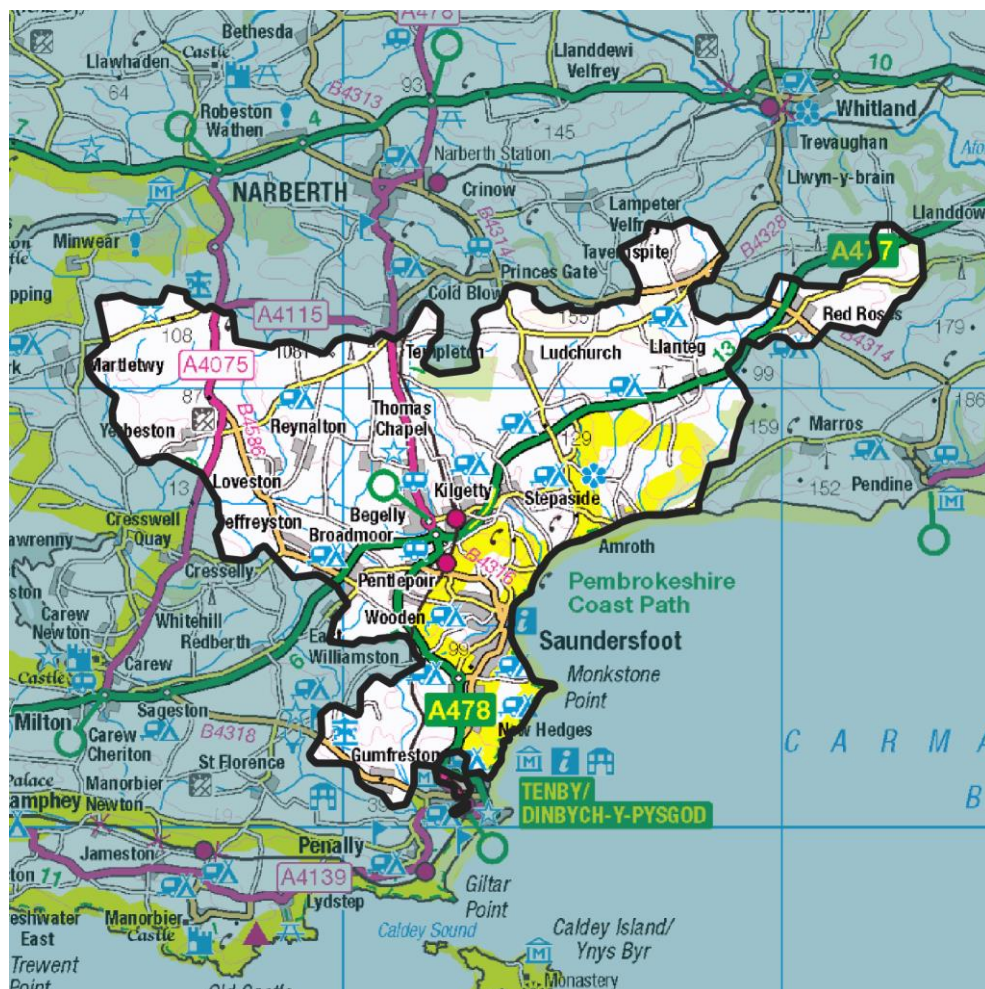
More information about this zone:

is the dedicated scheme page for this zone on the Flexible Power website, here you can view;

- Availability windows
- Monthly profiles
- Service overview
- Valuation tool
- Postcode checker
- Register interest

[Back to CMZ list](#)

Flexibility Analysis Report for CMZ_T4A_SWA_0003_P1 - Pembroke – Broadfield



Products	Season	MW Peak	Response
Dynamic & Restore	Winter/Summer	2.10	D↓ G↑

More information about this zone:

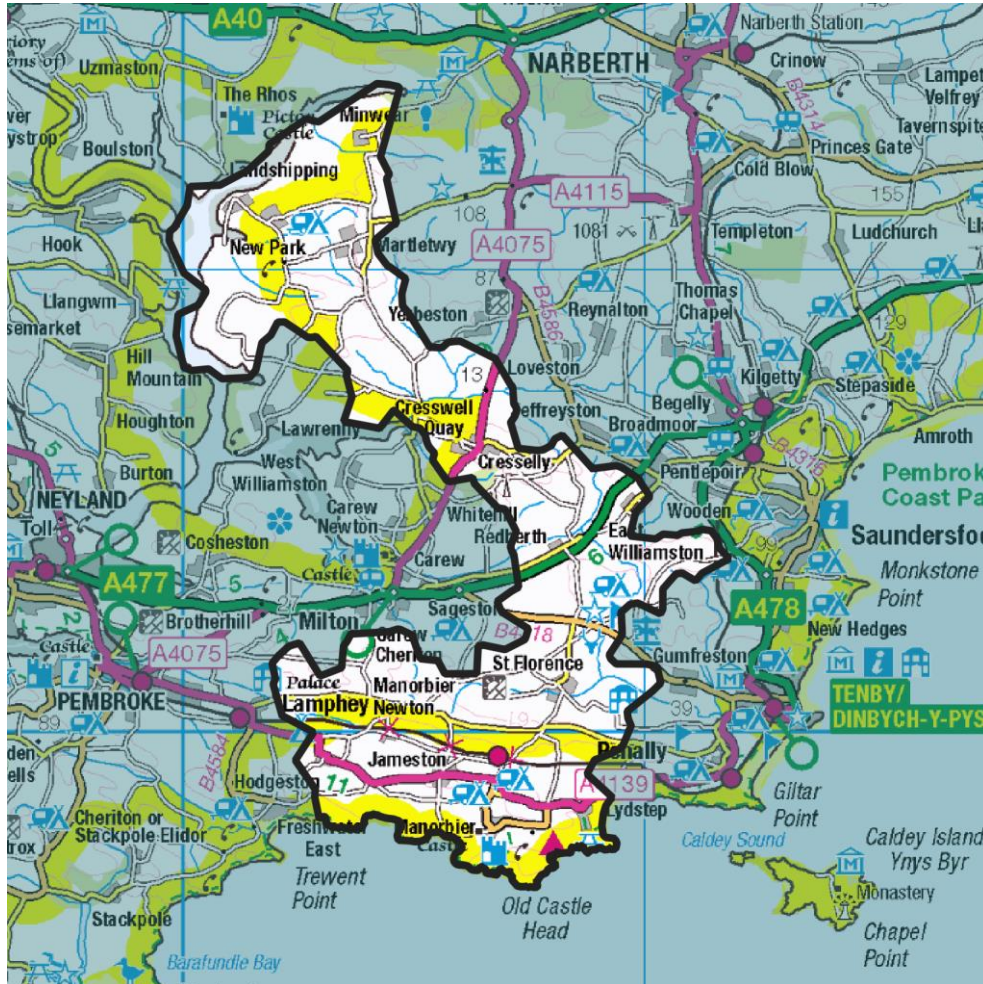
https://www.flexiblepower.co.uk/scheme/CMZ_T4A_SWA_0003_P1

is the dedicated scheme page for this zone on the Flexible Power website, here you can view;

- Availability windows
- Monthly profiles
- Service overview
- Valuation tool
- Postcode checker
- Register interest

[Back to CMZ list](#)

Flexibility Analysis Report for CMZ_T4A_SWA_0003_P3 - Pembroke - St Florence



Products	Season	MW Peak	Response
Dynamic & Restore	Winter/Summer	1.13	D↓ G↑

More information about this zone:

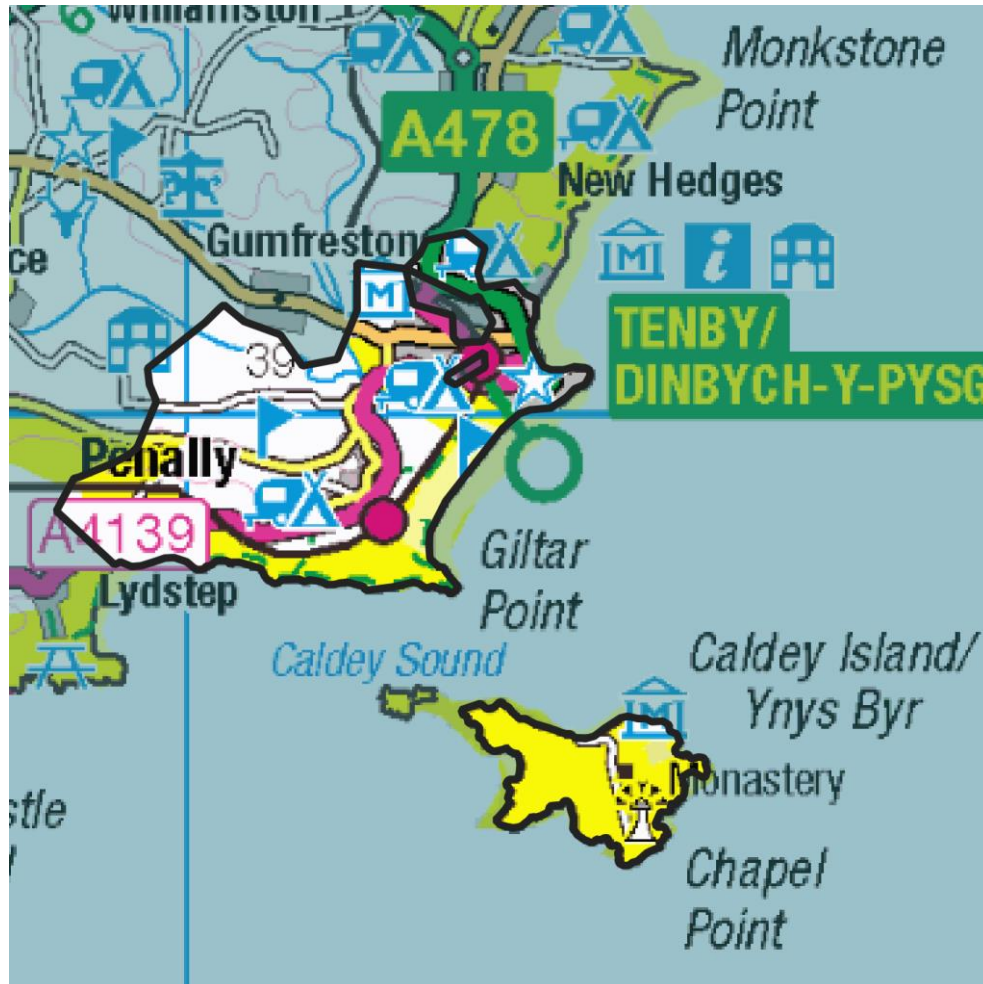
https://www.flexiblepower.co.uk/scheme/CMZ_T4A_SWA_0003_P3

is the dedicated scheme page for this zone on the Flexible Power website, here you can view;

- Availability windows
- Monthly profiles
- Service overview
- Valuation tool
- Postcode checker
- Register interest

[Back to CMZ list](#)

Flexibility Analysis Report for CMZ_T4A_SWA_0003_P2 - Pembroke – Tenby



Products	Season	MW Peak	Response
Dynamic & Restore	Winter/Summer	1.82	D↓ G↑

More information about this zone:

https://www.flexiblepower.co.uk/scheme/CMZ_T4A_SWA_0003_P2
is the dedicated scheme page for this zone on the Flexible Power website, here you can view;

- Availability windows
- Monthly profiles
- Service overview
- Valuation tool
- Postcode checker
- Register interest

[Back to CMZ list](#)

[illegible]

More information about this zone:

- Availability windows
- Monthly profiles
- Service overview
- Valuation tool
- Postcode checker
- Register interest

[Back to CMZ list](#)

Flexibility Analysis Report for CMZ_T3A_SWE_0005 - Bridgwater/Street



Products	Season	MW Peak	Response
Dynamic & Restore	Summer	9.63	D↓ G↑

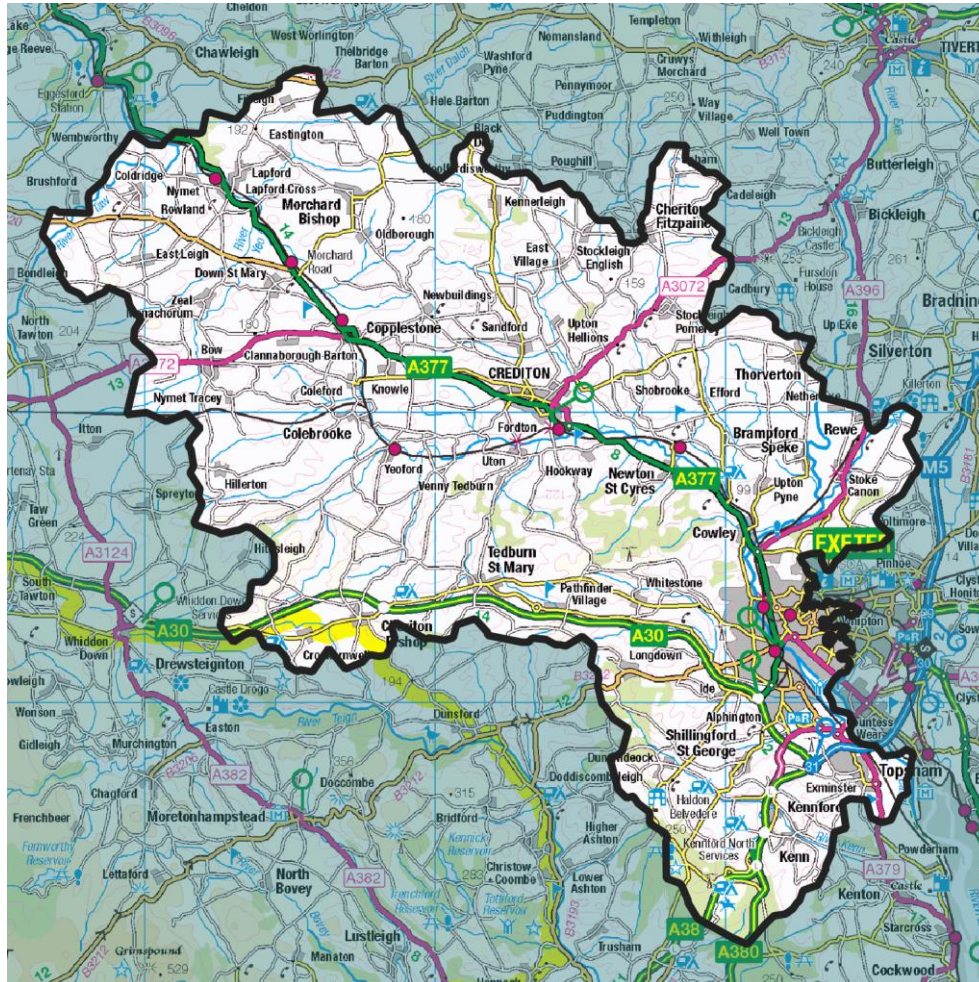
More information about this zone:

https://www.flexiblepower.co.uk/scheme/CMZ_T3A_SWE_0005
 is the dedicated scheme page for this zone on the Flexible Power website, here you can view;

- Availability windows
- Monthly profiles
- Service overview
- Valuation tool
- Postcode checker
- Register interest

[Back to CMZ list](#)

Flexibility Analysis Report for CMZ_T2A_SWE_0002 - Exeter City



Products	Season	MW Peak	Response
Dynamic & Restore	Winter	9.72	D↓ G↑

More information about this zone:

https://www.flexiblepower.co.uk/scheme/CMZ_T2A_SWE_0002

is the dedicated scheme page for this zone on the Flexible Power website, here you can view;

- Availability windows
- Monthly profiles
- Service overview
- Valuation tool
- Postcode checker
- Register interest

[Back to CMZ list](#)

Flexibility Analysis Report for CMZ_T3B_SWE_0007 - Hayle – Camborne



Products	Season	MW Peak	Response
Secure & Restore	Winter	11.20	D↓ G↑

More information about this zone:

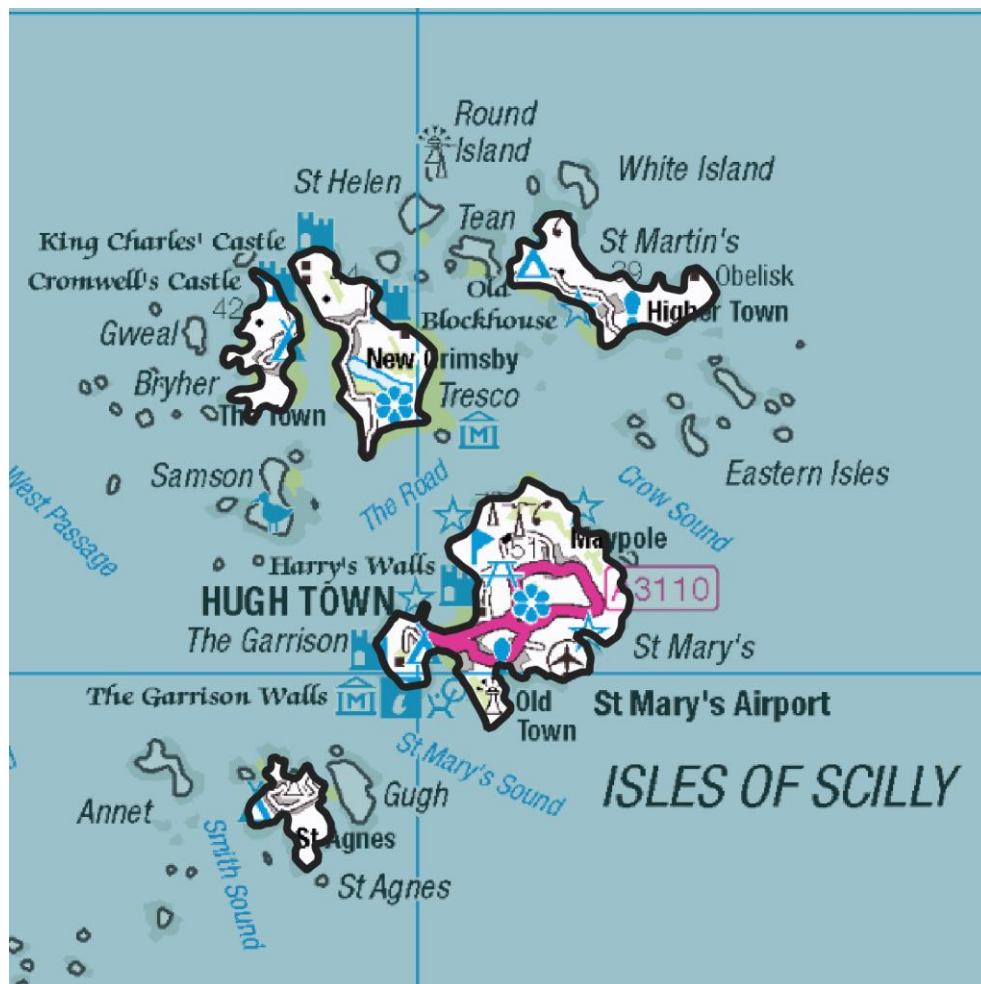
https://www.flexiblepower.co.uk/scheme/CMZ_T3B_SWE_0007

is the dedicated scheme page for this zone on the Flexible Power website, here you can view;

- Availability windows
- Monthly profiles
- Service overview
- Valuation tool
- Postcode checker
- Register interest

[Back to CMZ list](#)

Flexibility Analysis Report for CMZ_T3B_SWE_0008 - Isles of Scilly



Products	Season	MW Peak	Response
Secure & Restore	Winter	0.47	D↓ G↑

More information about this zone:

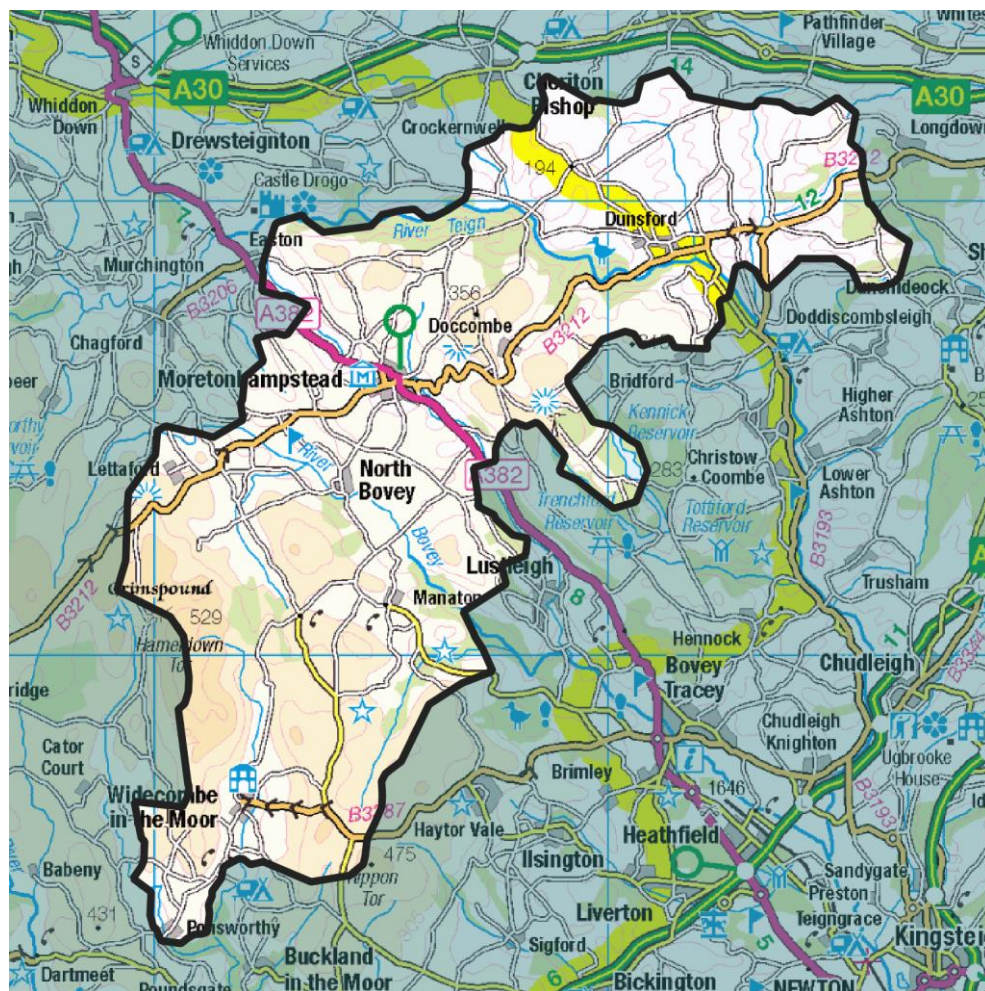
https://www.flexiblepower.co.uk/scheme/CMZ_T3B_SWE_0008

is the dedicated scheme page for this zone on the Flexible Power website, here you can view;

- Availability windows
- Monthly profiles
- Service overview
- Valuation tool
- Postcode checker
- Register interest

[Back to CMZ list](#)

Flexibility Analysis Report for CMZ_T4A_SWE_0009 – Moretonhampstead



Products	Season	MW Peak	Response
Dynamic & Restore	Winter	1.07	D↓ G↑

More information about this zone:

https://www.flexiblepower.co.uk/scheme/CMZ_T4A_SWE_0009

is the dedicated scheme page for this zone on the Flexible Power website, here you can view;

- Availability windows
- Monthly profiles
- Service overview
- Valuation tool
- Postcode checker
- Register interest

[Back to CMZ list](#)

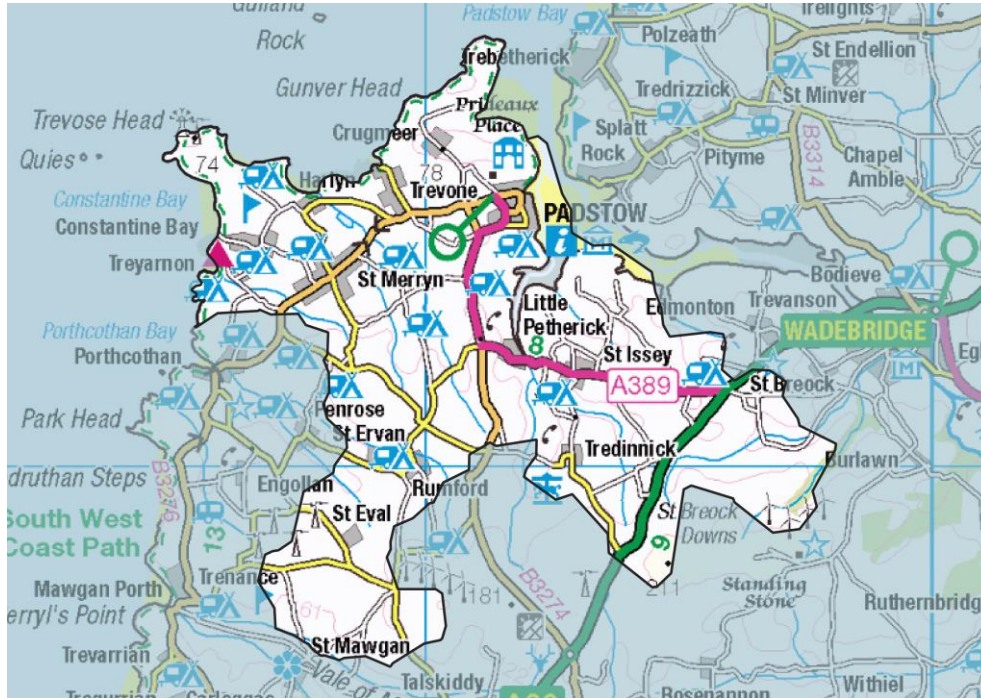
This is a detailed map of the Torquay area in Devon, England. The map shows the coastline of the South West Coast Path, with Torquay at the bottom right. Major roads are highlighted in yellow and green, including the A38 and A379. Numerous towns and villages are labeled, such as Torquay, Babbacombe, Dartington, and Totterton. The map also shows the River Teign and various landmarks like the Torquay Museum and the Torquay Hotel. The map is oriented with North at the top.

More information about this zone:

- Availability windows
- Monthly profiles
- Service overview
- Valuation tool
- Postcode checker
- Register interest

[Back to CMZ list](#)

Flexibility Analysis Report for CMZ_T4B_SWE_0001 - Padstow



Products	Season	MW Peak	Response
Dynamic & Restore	Winter/Summer	2.29	D↓ G↑

More information about this zone:

https://www.flexiblepower.co.uk/scheme/CMZ_T4B_SWE_0001

is the dedicated scheme page for this zone on the Flexible Power website, here you can view;

- Availability windows
- Monthly profiles
- Service overview
- Valuation tool
- Postcode checker
- Register interest

[Back to CMZ list](#)

Flexibility Analysis Report for CMZ_T2A_SWE_0001 - Plymouth/South Hams



Products	Season	MW Peak	Response
Dynamic & Restore	Summer	41.92	D↓ G↑

More information about this zone:

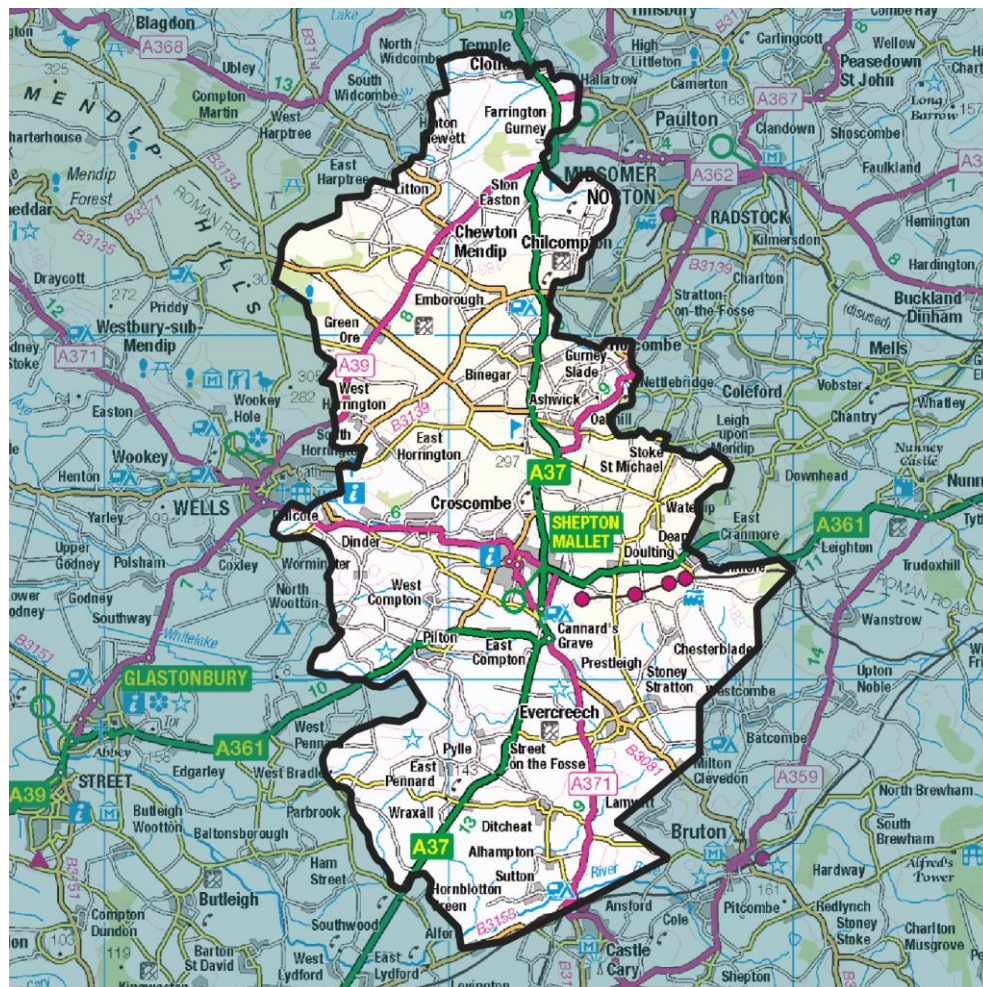
https://www.flexiblepower.co.uk/scheme/CMZ_T2A_SWE_0001

is the dedicated scheme page for this zone on the Flexible Power website, here you can view;

- Availability windows
- Monthly profiles
- Service overview
- Valuation tool
- Postcode checker
- Register interest

[Back to CMZ list](#)

Flexibility Analysis Report for CMZ_T3A_SWE_0004 – Radstock



Products	Season	MW Peak	Response
Dynamic & Restore	Winter/Summer	3.26	D↓ G↑

More information about this zone:

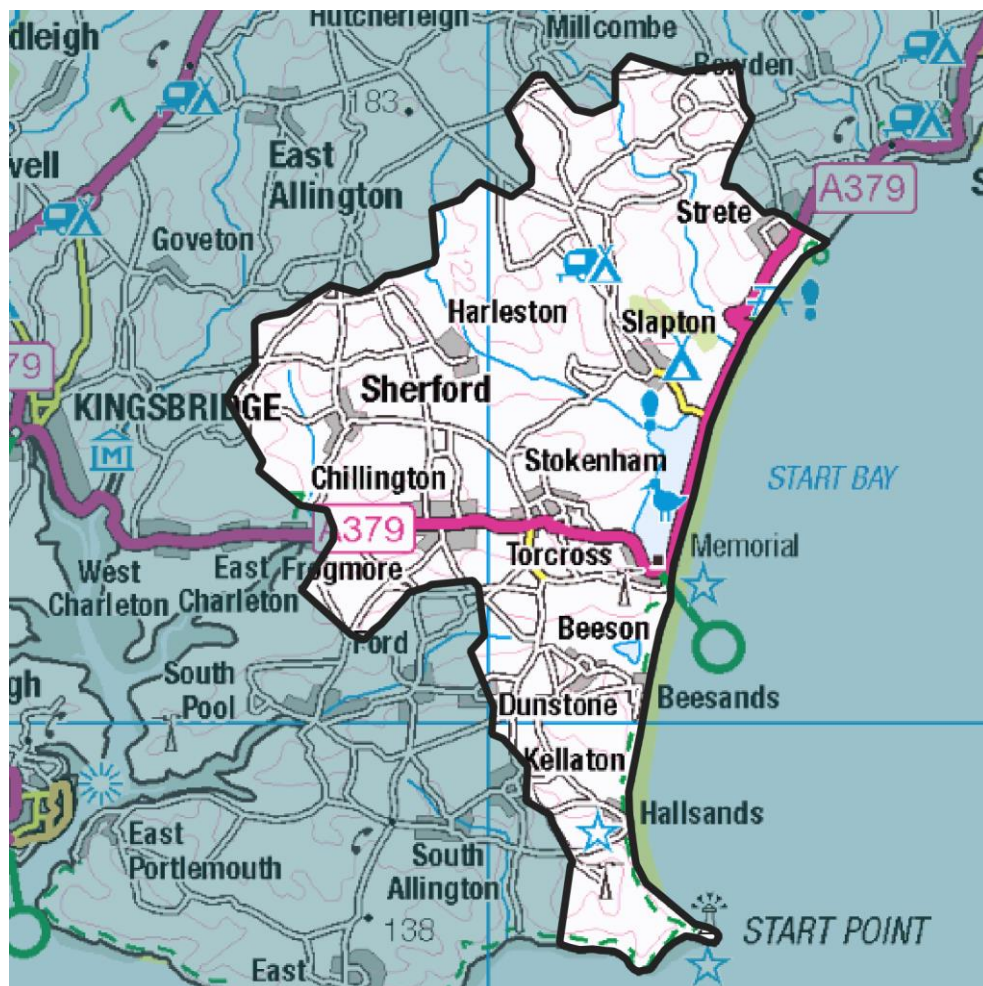
https://www.flexiblepower.co.uk/scheme/CMZ_T3A_SWE_0004

is the dedicated scheme page for this zone on the Flexible Power website, here you can view;

- Availability windows
- Monthly profiles
- Service overview
- Valuation tool
- Postcode checker
- Register interest

[Back to CMZ list](#)

Flexibility Analysis Report for CMZ_T4A_SWE_0011 – Stokenham



Products	Season	MW Peak	Response
Secure & Restore	Winter	0.78	D↓ G↑

More information about this zone:

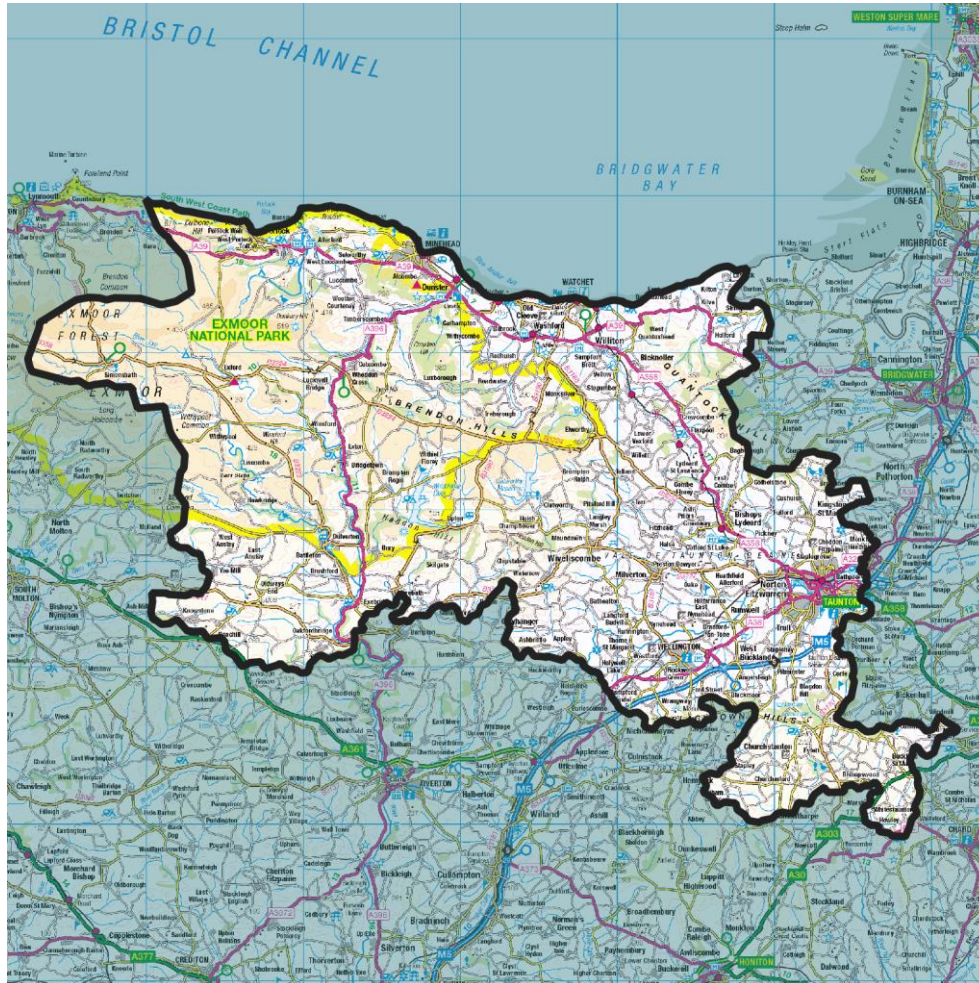
https://www.flexiblepower.co.uk/scheme/CMZ_T4A_SWE_0011

is the dedicated scheme page for this zone on the Flexible Power website, here you can view;

- Availability windows
- Monthly profiles
- Service overview
- Valuation tool
- Postcode checker
- Register interest

[Back to CMZ list](#)

Flexibility Analysis Report for CMZ_T4A_SWE_0012 - Taunton GSP



Products	Season	MW Peak	Response
Dynamic & Restore	Winter	68.41	D↓ G↑

More information about this zone:

https://www.flexiblepower.co.uk/scheme/CMZ_T4A_SWE_0012

is the dedicated scheme page for this zone on the Flexible Power website, here you can view;

- Availability windows
- Monthly profiles
- Service overview
- Valuation tool
- Postcode checker
- Register interest

[Back to CMZ list](#)

Flexibility Analysis Report for CMZ_T4A_SWE_0010 – Tiverton



Products	Season	MW Peak	Response
Dynamic & Restore	Winter/Summer	9.88	D↓ G↑

More information about this zone:

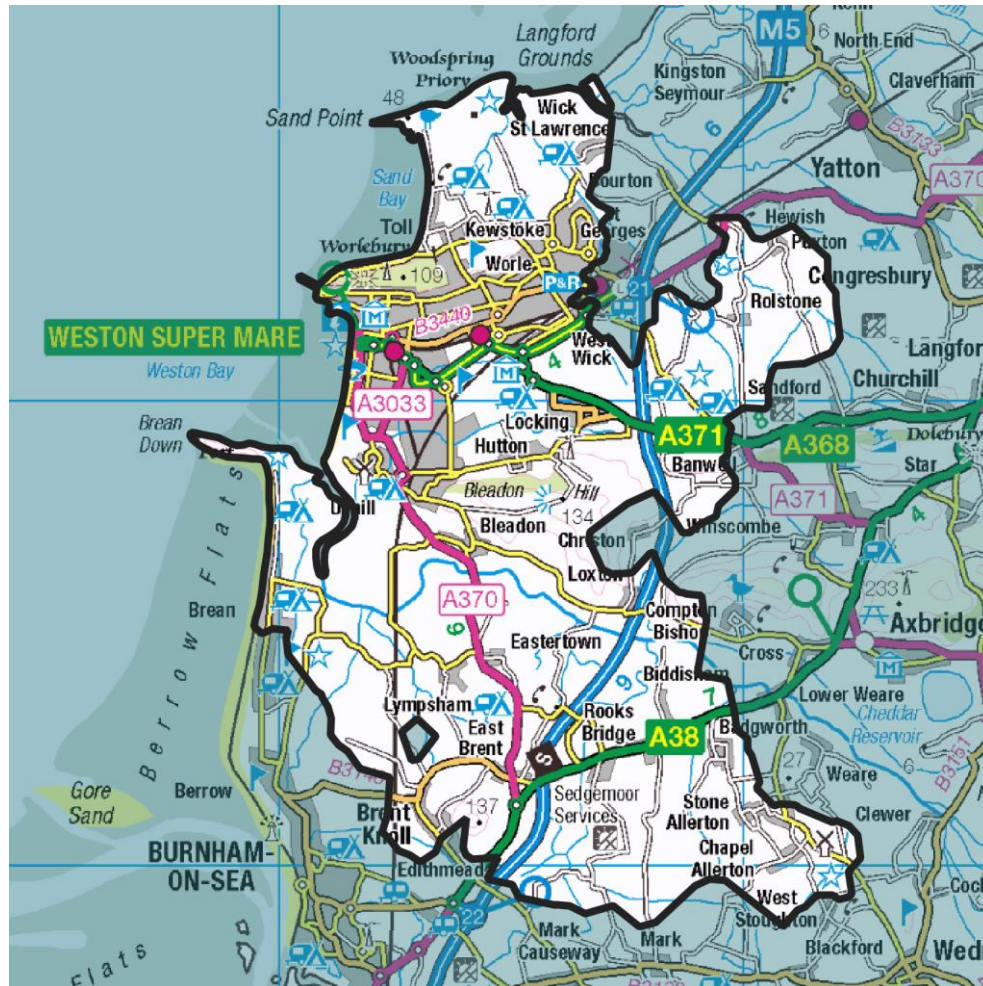
https://www.flexiblepower.co.uk/scheme/CMZ_T4A_SWE_0010

is the dedicated scheme page for this zone on the Flexible Power website, here you can view;

- Availability windows
- Monthly profiles
- Service overview
- Valuation tool
- Postcode checker
- Register interest

[Back to CMZ list](#)

Flexibility Analysis Report for CMZ_T4A_SWE_0013 - Weston Super Mare



Products	Season	MW Peak	Response
Secure & Restore	Winter	3.76	D↓ G↑

More information about this zone:

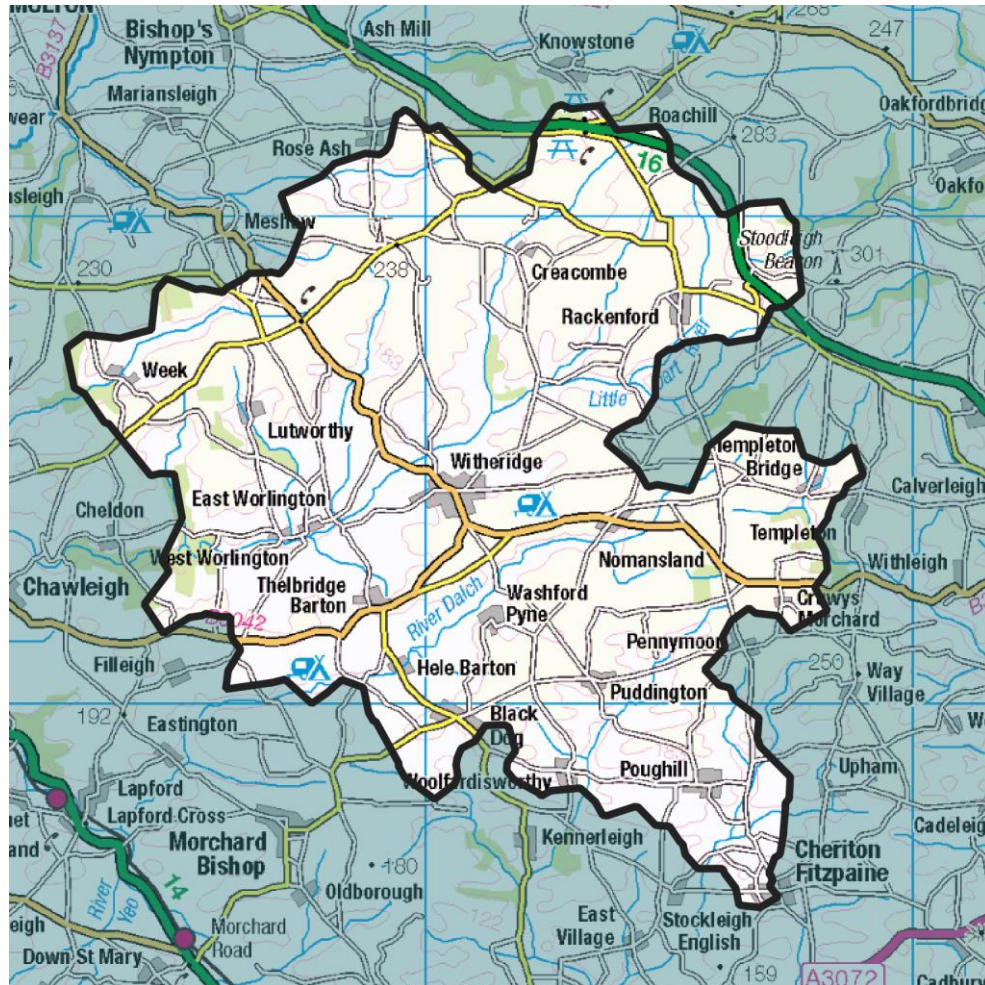
https://www.flexiblepower.co.uk/scheme/CMZ_T4A_SWE_0013

is the dedicated scheme page for this zone on the Flexible Power website, here you can view;

- Availability windows
- Monthly profiles
- Service overview
- Valuation tool
- Postcode checker
- Register interest

[Back to CMZ list](#)

Flexibility Analysis Report for CMZ_T4A_SWE_0014 - Witheridge



Products	Season	MW Peak	Response
Secure & Restore	Winter/Summer	0.86	D↓ G↑

More information about this zone:

https://www.flexiblepower.co.uk/scheme/CMZ_T4A_SWE_0014

is the dedicated scheme page for this zone on the Flexible Power website, here you can view;

- Availability windows
- Monthly profiles
- Service overview
- Valuation tool
- Postcode checker
- Register interest

[Back to CMZ list](#)

Section 6 – Sources of further information

WPD has created the Flexible Power brand to deliver the procurement of demand response services. The Flexible Power website is dedicated to providing visibility of the services WPD is looking to procure, it contains detailed information about active CMZs and supporting documentation including; the ENA's DSO service descriptions, the process for declaration and dispatch, payment methodology, the CMZ Terms & Conditions, API requirements.

The website can be viewed at www.flexiblepower.co.uk.

Should you require any further information please contact the Flexible Power team: WPDFlexiblePower@westernpower.co.uk.